

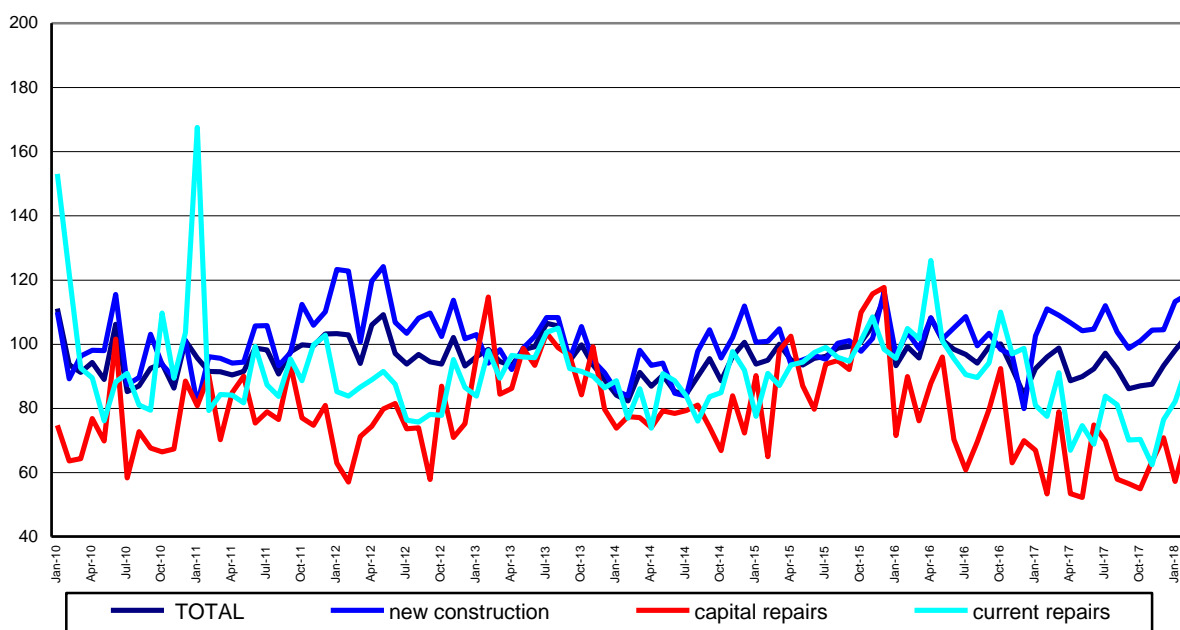
Domain: Construction

## IN FEBRUARY 2018, THE VOLUME OF CONSTRUCTION WORKS<sup>1</sup> INCREASED BY 4.6% COMPARED TO JANUARY 2018

- Compared to the same month of the previous year, the volume of construction works increased, as unadjusted series, by 30.9% and, as adjusted series according to the number of working days and to seasonality, by 4.6%.
- Compared to the corresponding month of previous year, the volume of construction works increased, both as unadjusted series and as adjusted series according to the number of working days and seasonality, by 10.7%, respectively by 6.9%.
- During 1.I – 28.II.2018, compared to the period 1.I – 28.II.2017, the volume of construction works increased, both as unadjusted series and as adjusted series according to the number of working days and seasonality, by 8.4%, respectively by 6.5%.

**Monthly evolution of construction works, by structure elements,  
according to CANE Rev. 2  
- January 2010-February 2018 -  
(adjusted series according to the number of working days and to seasonality)**

- 2015=100 -

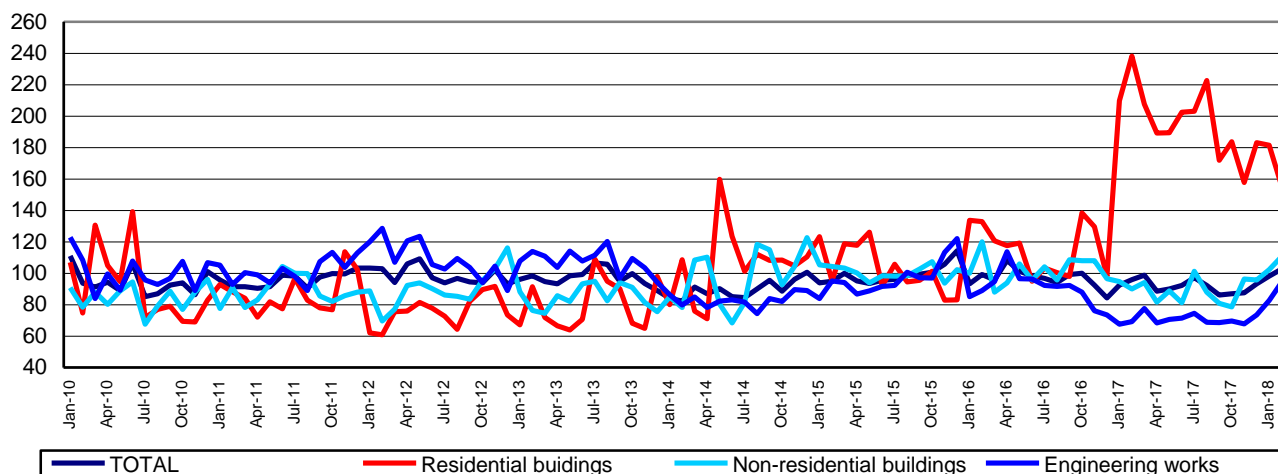


[Graph data in xls format](#)

<sup>1</sup> adjusted series according to the number of working days and to seasonality

**Monthly evolution of construction works, by construction objects,  
according to CANE Rev. 2  
- January 2010-February 2018 -  
(adjusted series according to the number of working days and to seasonality)**

- 2015=100 -



[Graph data in xls format](#)

#### February 2018 compared to January 2018

The volume of construction works increased, as unadjusted series, by 30.9%, an increase highlighted in capital repair works (+40.4%), in maintenance and current repair works (+37.5%) and in new construction works (+28.0%).

By construction objects, increases were noticed for the engineering works (+43.0%), the non-residential buildings (+30.5%) and the residential buildings (+11.1%).

The volume of construction works increased overall, as adjusted series according to the number of working days and to seasonality, by 4.6%, an increase sustained by the capital repair works (+24.2%), maintenance and current repair works (+13.2%) and new construction works (+1.9%).

By construction objects, the volume of construction works rose in engineering works (+13.9%) and in non-residential buildings (+8.4%). The residential buildings decreased by 14.2%.

#### February 2018 compared to February 2017

The volume of construction works increased overall, as unadjusted series, by 10.7%. By structure elements, there were rises of 38.5% in capital repair works, of 22.6% in maintenance and current repair works and of 5.2% in new construction works.

By construction objects, the volume of construction works rose in engineering works (+47.9%) and non-residential buildings (+25.0%). The residential buildings were down 35.5%.

The volume of construction works increased, as adjusted series according to the number of working days and to seasonality, by 6.9%. By structure elements, there were rises of 33.2% in capital repair works, of 20.0% in maintenance and current repair works and of 4.0% in new construction works.

By construction objects, the volume of construction works rose in engineering works (+36.4) and in non-residential buildings (+23.2%). The residential buildings decreased by 34.7%.

## 1.I – 28.II.2018 compared to 1.I – 28.II.2017

The volume of construction works increased overall, as unadjusted series, by 8.4%. By structure elements, there were rises of 11.9% in maintenance and current repair works, of 8.6% in capital repair works and of 7.3% in new construction works.

By construction objects, the volume of construction works rose in engineering works and non-residential buildings by 34.3%, respectively by 17.0%. The residential buildings were down 26.6%.

The volume of construction works increased overall, as adjusted series according to the number of working days and to seasonality, by 6.5%. By structure elements, there were rises of 10.6% in maintenance and current repair works, of 7.1% in new construction works and of 6.7% in capital repair works.

By construction objects, the volume of construction works rose in engineering works (+29.5) and in non-residential buildings (+15.4%). The residential buildings decreased by 24.8%.

### Construction works indices

- percentages -

		February 2018 compared to:		1.I-28.II.2018/ 1.I-28.II.2017
		January 2018	February 2017	
<b>Construction - total</b>	<b>U</b>	<b>130.9</b>	<b>110.7</b>	<b>108.4</b>
	<b>A</b>	<b>104.6</b>	<b>106.9</b>	<b>106.5</b>
- by structure elements:				
New construction	U	128.0	105.2	107.3
	A	101.9	104.0	107.1
Capital repairs	U	140.4	138.5	108.6
	A	124.2	133.2	106.7
Maintenance and current repairs	U	137.5	122.6	111.9
	A	113.2	120.0	110.6
- by construction objects:				
Residential buildings	U	111.1	64.5	73.4
	A	85.8	65.3	75.2
Non-residential buildings	U	130.5	125.0	117.0
	A	108.4	123.2	115.4
Engineering works	U	143.0	147.9	134.3
	A	113.9	136.4	129.5

U = unadjusted series; A = adjusted series according to the number of working days and to seasonality

[Table data in xls format](#)

### Additional information:

**IMPORTANT!** In order to show the changes in the structure of the economy, starting with the publication of the data for the reference month **January 2018**, the base year used in the calculation of construction works indices was changed **from 2010 to 2015**. The change in the base year also involves the updating of the weighting system; the changes in the weighting system reflect the structural changes that occurred in the activities of the national economy. These changes led to the adequate recalculation and revision of the previously published data series.

These changes will appear in press releases, statistical publications produced by the NIS and in the TEMPO online database.

The **construction volume indices** are determined by deflating the value data with the construction cost indices by structure element and by construction object. The construction volume indices are calculated for the overall construction branch (section F of CANE Rev. 2), by structure element (new construction works, capital repair works, maintenance and current repair works) and by construction object (residential buildings, non-residential buildings and engineering works).

The construction works indices overall are calculated as a weighted arithmetic mean of indices by structure element or of indices by construction object.

Beside the gross series of construction volume indices, **indices that are adjusted by number of working days and seasonality** are also calculated on a monthly basis, through the **regressive method**, a method recommended by the European regulations concerning short-term indicators (Council Regulation No 1165/1998).

For the correct interpretation of the indicators, please see the [Methodological Notes attached to the press release on the homepage](#).

For additional information, please see the statistical publication *Monthly Statistical Bulletin* (date of issue April 25, 2018) and the TEMPO online database of the NIS (the data for February 2018 will be available on April 13, 2018).

For comparable data with the other Member States of the European Union, please see the Eurostat press release issued on Wednesday, April 18, 2018 at the address <http://ec.europa.eu/eurostat/web/main>.

The next issue of the press release will be on Monday, May 14, 2018.

Press release archive: <http://www.insse.ro/cms/en/comunicate-de-presa-view>

#### **Communication Directorate**

E-mail: [biroupresa@insse.ro](mailto:biroupresa@insse.ro)

Tel: +4021 3181869