

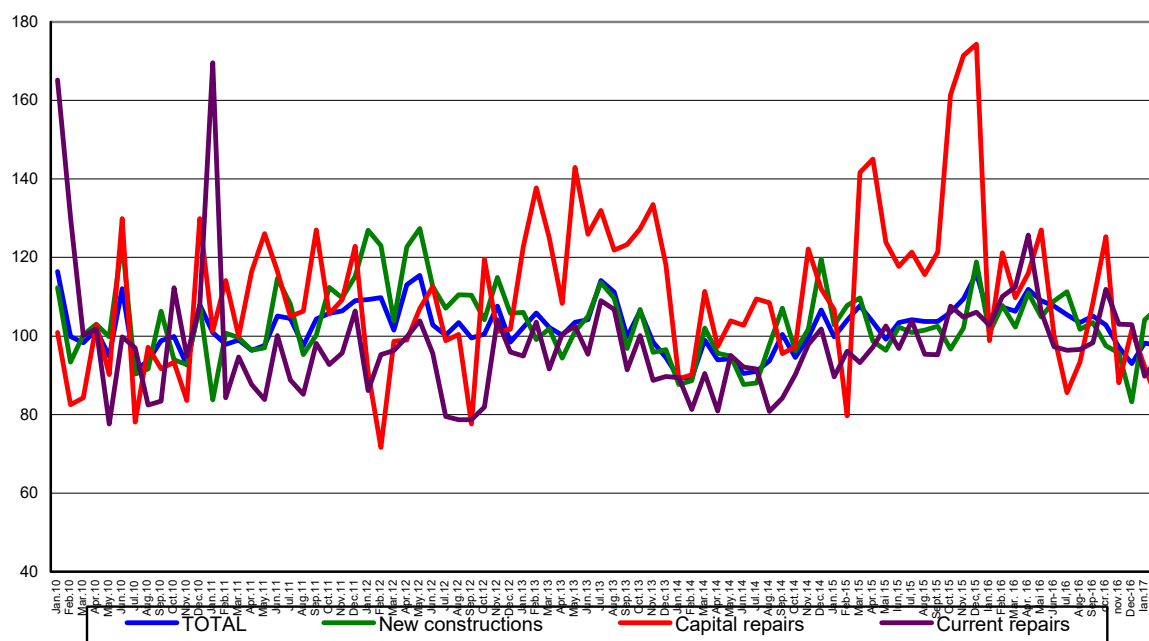
Domain: Construction

## IN FEBRUARY 2017, THE CONSTRUCTION WORKS DECREASED BY 3.4% COMPARED TO FEBRUARY 2016

- Compared to the previous month, in February 2017, the volume of construction works increased, as gross series, by 24.1% and decreased by 0.6% as adjusted series according to the number of working days.
- Compared to the corresponding month of the previous year, the volume of construction works decreased, both as gross series and as adjusted series according to the number of working days and to seasonality by 3.4% and by 9.1%, respectively.
- Compared to the period 1.I-29.II.2016, in the period 1.I-28.II.2017, the volume of construction works decreased, both as gross series and as adjusted series according to the number of working days and to seasonality by 2.1% and by 7.6%, respectively.

**Monthly evolution of construction works, by structure elements,  
according to CANE Rev. 2  
- January 2010 – February 2017-**  
(adjusted series according to the number of working days and to seasonality)

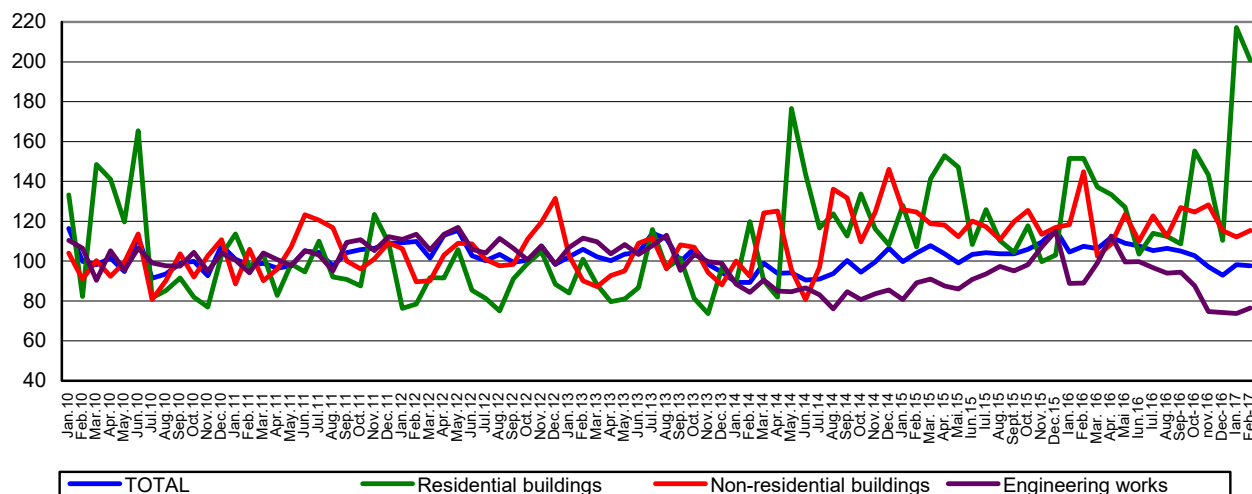
- 2010=100 -



[Graph data in xls format](#)

**Monthly evolution of construction works, by construction objects,  
according to CANE Rev. 2  
- January 2010 – February 2017 -  
(adjusted series according to the number of working days and to seasonality)**

- 2010=100 -



[Graph data in xls format](#)

#### February 2017 compared to January 2017

The volume of construction works increased as gross series by 24.1%, increase highlighted in maintenance and current repairs works by 28.9% and in new construction works by 25.9%. The capital repair works decreased by 0.1%.

By construction objects, there were rises in engineering works of 28.5%, in non-residential buildings of 24.2% and in residential buildings of 18.8%.

The volume of construction works decreased per total, as adjusted series by the number of working days and by seasonality, by 0.6%, decrease highlighted in capital repairs works by 9.5%. The maintenance and current repairs works and the new construction works increased by 5.0% and by 2.9%, respectively.

By construction objects, the volume of construction works decreased in residential buildings by 7.5%. There were rises in engineering works of 3.7% and in non-residential buildings of 3.0%.

#### February 2017 compared to February 2016

The volume of construction works decreased, as gross series, by 3.4%. By structure elements, there were drops in capital repairs works of 29.7% and in maintenance and current repairs works of 1.7%. The new construction works increased by 0.1%.

By construction objects, the volume of construction works decreased in engineering works by 19.3% and in non-residential buildings by 16.4%. There were rises in residential buildings of 70.3%.

The volume of construction works decreased, as adjusted series according to the number of working days and to seasonality, by 9.1%. By structure elements, there were drops as follows: in capital repairs works of 31.2%, in maintenance and current repairs works of 14.4% and in new construction works of 0.7%.

By construction objects, the volume of construction works decreased in non-residential buildings by 20.3% and in engineering works by 14.1%. There were rises in residential buildings of 32.4%.

**Period 1.I-28.II.2017 compared to period 1.I-29.II.2016**

The volume of construction works decreased per total, as gross series, by 2.1%. By structure elements, there were drops in capital repairs works of 19.7% and in maintenance and current repairs works of 7.9%. The new construction works increased by 2.7%.

By construction objects, there were drops in engineering works and in **residential buildings** by 19.8% and by 11.7%, respectively. The **residential buildings** increased by 63.7%.

The volume of construction works decreased per total, as adjusted series according to the number of working days and to seasonality, by 7.6%. By structure elements, there were drops in capital repairs works of 20.2% and in maintenance and current repairs works of 13.5%. The new construction works increased by 1.2%.

By construction objects, the volume of construction works decreased and in engineering works by 15.5% and in non-residential buildings by 13.5%. There were rises in residential buildings of 37.9%.

**Construction works indices**

				- percentage-
		FEBRUARY 2017 compared to:		1.I-28.II.2017/ 1.I-29.II.2016
		JANUARY 2017	FEBRUARY 2016	
Constructions - total	B	124.1	96.6	97.9
	S	99.4	90.9	92.4
- by structure elements:				
New constructions	B	125.9	100.1	102.7
	S	102.9	99.3	101.2
Capital repairs	B	99.9	70.3	80.3
	S	90.5	68.8	79.8
Maintenance and current repairs	B	128.9	98.3	92.1
	S	105.0	85.6	86.5
- by construction objects:				
Residential buildings	B	118.8	170.3	163.7
	S	92.5	132.4	137.9
Non-residential buildings	B	124.2	83.6	88.3
	S	103.0	79.7	86.5
Engineering works	B	128.5	80.7	80.2
	S	103.7	85.9	84.5

B= gross series; S= adjusted series according to the number of working days and to seasonality;

[Graphic data in xls format](#)

**Additional Information:**

For the correct interpretation of results, kindly see the [Methodological Note attached to the press release on the homepage](#).

For additional information, kindly see the statistical publication Monthly Statistical Bulletin (date of issue April 26, 2017) and the on line database TEMPO of INS (data for February 2017 will be available on April 13, 2017).

For comparable data with the other Member States of the European Union, kindly see the Eurostat press release, issued on Thursday, April 20, 2017 at the address: <http://ec.europa.eu/eurostat/web/main>

The next issue of the press release will be on Friday, May 12, 2017.

The archive of the press releases: <http://www.insse.ro/cms/en/comunicate-de-presa-view>

**The Directorate of Communication**

e-mail: [biroupresa@insse.ro](mailto:biroupresa@insse.ro)

Tel: +4021 3181869