

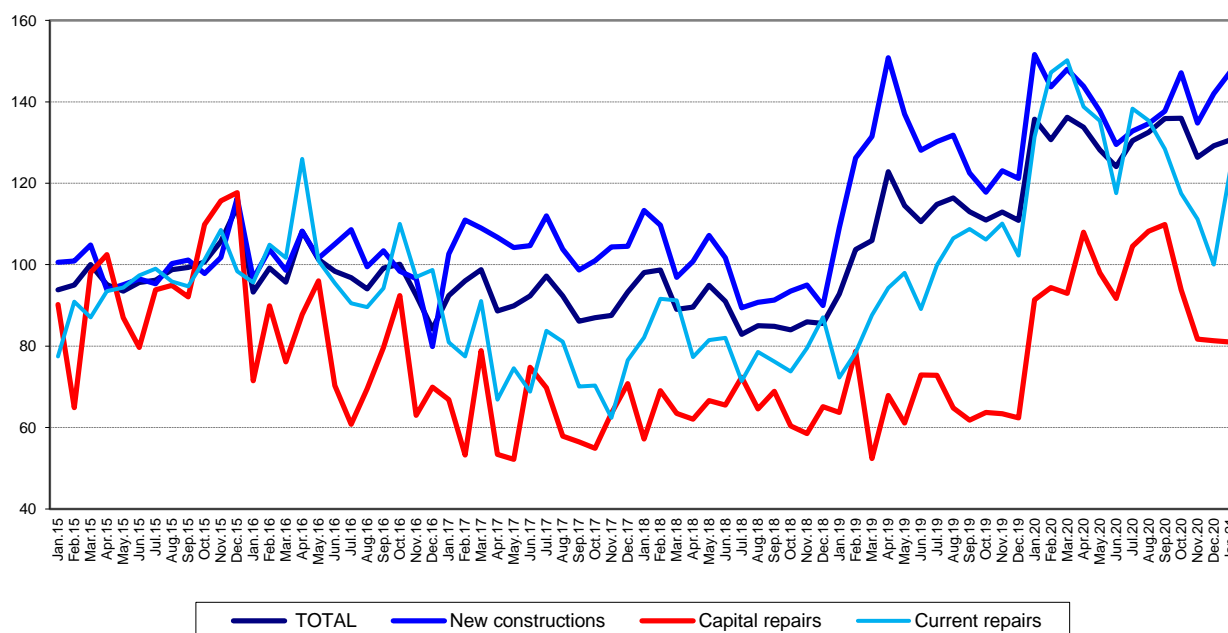
Domain: Construction

## CONSTRUCTION WORKS IN JANUARY 2021

- The volume of construction works decreased, as gross series, by 3.6% compared to the same month of the previous year and was down 3.7% as adjusted series according to the number of working days and to seasonality.

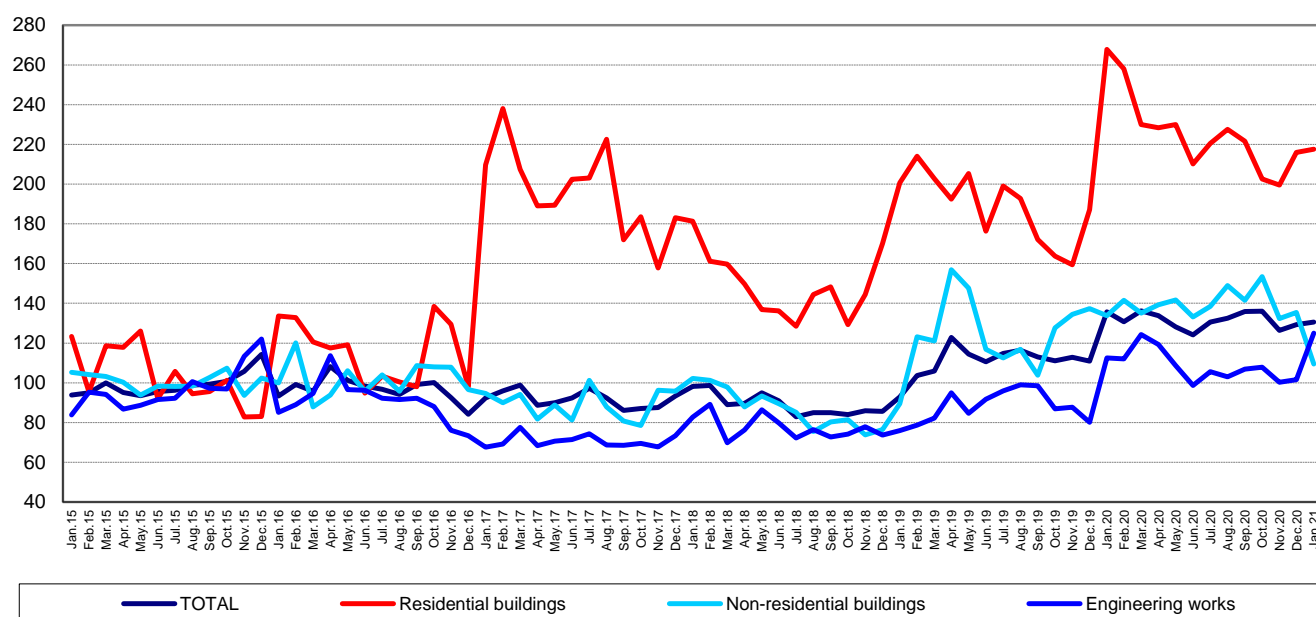
Monthly evolution of construction works, by structure elements, according to NACE Rev. 2  
- January 2015-January 2021 -  
(adjusted series according to the number of working days and to seasonality)

- 2015=100 -


[The graph data in xls format](#)

**Monthly evolution of construction works, by construction objects, according to NACE Rev. 2**  
**- January 2015-January 2021 -**  
**(adjusted series according to the number of working days and to seasonality)**

- 2015=100 -



[The graph data in xls format](#)

### January 2021 compared to December 2020

The volume of construction works decreased, as gross series, by 64.7%, a decrease reflected in capital repair works (-75.7%), maintenance and current repair works (-62.7%) and new construction works (-63.5%).

By construction objects, drops were reported as follows: non-residential buildings (-71.9%), engineering works (-62.7%) and residential buildings (-58.4%).

The volume of construction works increased overall, as adjusted series according to the number of working days and to seasonality, by 1.1%, an increase reflected in maintenance and current repair works (+23.0%) and new construction works (+3.8%). The capital repair works dropped 0.4%.

By construction objects, the volume of construction works increased for engineering works (+22.9%) and residential buildings (+0.7%). A 19.2% fall was reported for non-residential buildings.

### January 2021 compared to January 2020

The volume of construction works fell, as gross series, by 3.6%. By structure elements, drops were reported for capital repair works (-13.3%), for maintenance and current repair works (-6.4%) and for new construction works (-1.5%).

By construction objects, the volume of construction works dropped for non-residential buildings (-19.5%) and residential buildings (-17.3%). The engineering works were up 17.0%.

The volume of construction works decreased, as adjusted series according to the number of working days and to seasonality, by 3.7%. By structure elements, falls were reported for capital repair works (-11.4%), for maintenance and current repair works (-6.4%) and for new construction works (-2.8%).

By construction objects, the volume of construction works dropped for residential buildings (-18.7%) and non-residential buildings (-18.2%). The engineering works were up 11.0%.

## Construction works indices

- percentages -

		January 2021 compared to:	
		December 2020	January 2020
<b>Constructions – total</b>	<b>G</b>	<b>35.3</b>	<b>96.4</b>
	<b>S</b>	<b>101.1</b>	<b>96.3</b>
- by structure elements:			
New constructions	G	36.5	98.5
	S	103.8	97.2
Capital repairs	G	24.3	86.7
	S	99.6	88.6
Maintenance and current repairs	G	37.3	93.6
	S	123.0	93.6
- by construction objects:			
Residential buildings	G	41.6	82.7
	S	100.7	81.3
Non-residential buildings	G	28.1	80.5
	S	80.8	81.8
Engineering works	G	37.3	117.0
	S	122.9	111.0

G = gross series; S = adjusted series according to the number of working days and to seasonality

[The table data in xls format](#)

### Additional information:

- The **construction volume indices** are determined by deflating the value data with the construction cost indices by structure element and by construction object. The construction volume indices are calculated for the overall construction branch (section F of NACE Rev. 2), by structure element (new construction works, capital repair works, maintenance and current repair works) and by construction object (residential buildings, non-residential buildings and engineering works).
- The construction works indices overall are calculated as a weighted arithmetic mean of indices by structure element or of indices by construction object.
- Beside the gross series of construction volume indices, **indices that are adjusted by number of working days and seasonality** are also calculated on a monthly basis, through the **regressive method**, using the **JDEMETRA+ version 2.2.0** software package (**the TRAMO/SEATS method**), a method recommended by the European regulations concerning short-term indicators (Council Regulation No 1165/1998).

For the correct interpretation of the indicators, please see the [Methodological Notes attached to the press release on the homepage](#).

For additional information, please see the TEMPO online database of the NIS (the data for January 2021 will be available on March 16, 2021) and the Monthly Statistical Bulletin (date of issue March 29, 2021).

For comparative data at EU level, please see the Eurostat press release to be issued on Wednesday, March 17, 2021 at the address <https://ec.europa.eu/eurostat/web/main>.

The next issue of the press release will be on Friday, April 16, 2021.

Press release archive: <https://insse.ro/cms/en/comunicate-de-presa-view>

### Communication Directorate

E-mail: [biroupresa@insse.ro](mailto:biroupresa@insse.ro)

Tel: +4021 3181869