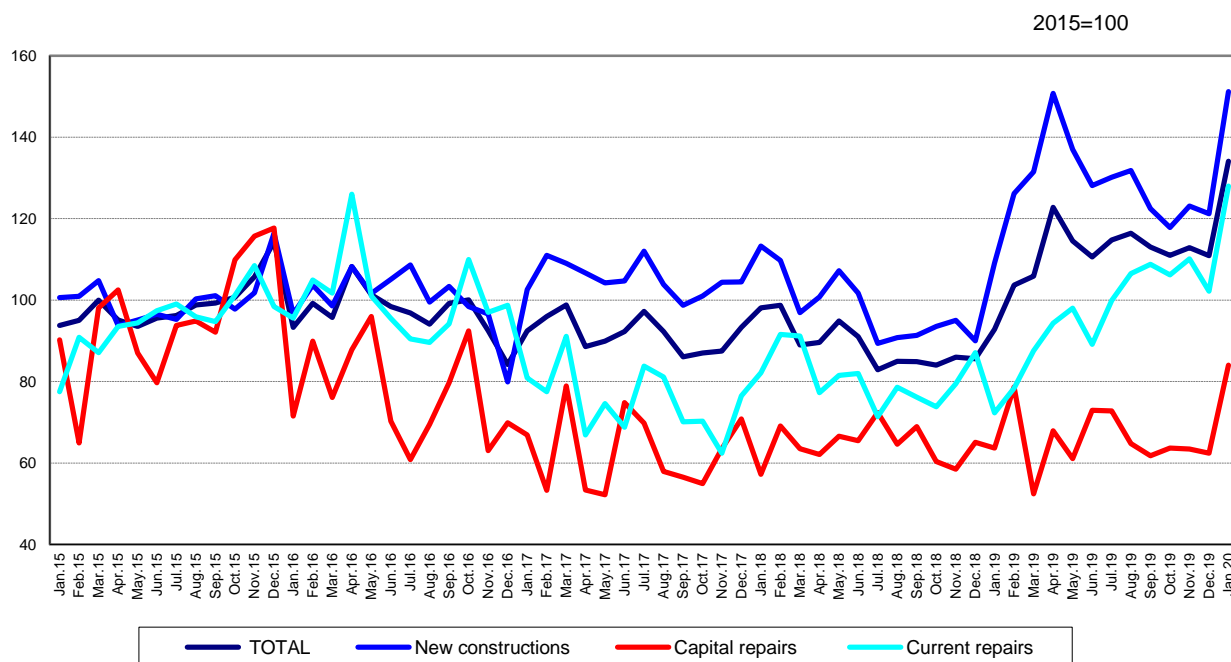


Domain: Construction

CONSTRUCTION WORKS IN JANUARY 2020

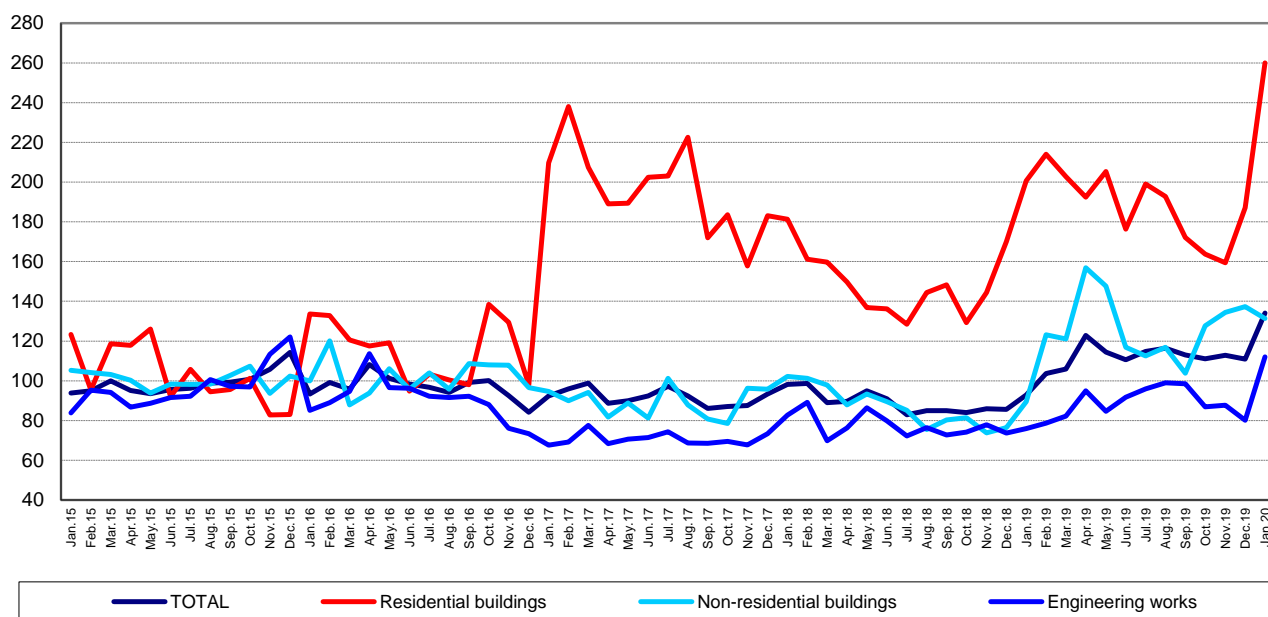
- The volume of construction works increased, as gross series, by 48.0% compared to the corresponding month of the previous year and rose, as adjusted series according to the number of working days and to seasonality, by 44.5%.

Monthly evolution of construction works, by structure elements, according to NACE Rev. 2
- January 2015 - January 2020 -
(adjusted series according to the number of working days and to seasonality)


[Graph data in xls format](#)

Monthly evolution of construction works, by construction objects, according to NACE Rev. 2
- January 2015 - January 2020 -
(adjusted series according to the number of working days and to seasonality)

2015=100



[Graph data in xls format](#)

January 2020 compared to December 2019

The volume of construction works decreased, as gross series, by 59.3%, a decrease reflected in capital repair works (-68.2%), in maintenance and current repair works (-64.2%) and in new construction works (-55.9%).

By construction objects, drops were reported as follows: non-residential buildings (-66.0%), engineering works (-60.7%) and residential buildings (-44.3%).

The volume of construction works increased overall, as adjusted series according to the number of working days and to seasonality, by 20.9%, an increase reflected in capital repair works (+34.6%), in maintenance and current repair works (+25.2%) and in new construction works (+24.7%).

By construction objects, the volume of construction works rose for engineering works (+39.7%) and for residential buildings (+38.9%). Non-residential buildings were down 4.4%.

January 2020 compared to January 2019

The volume of construction works rose, as gross series, by 48.0%. By structure elements, rises were reported as follows: maintenance and current repair works (+81.1%), new construction works (+40.8%) and capital repair works (+40.4%).

By construction objects, the volume of construction works increased for engineering works (+54.4%), for non-residential buildings (+47.8%) and for residential buildings (+39.4%).

The volume of construction works increased, as adjusted series according to the number of working days and to seasonality, by 44.5%. By structure elements, rises were reported for maintenance and current repair works (+77.0%), for new construction works (+38.6%) and for capital repair works (+31.9%).

By construction objects, the volume of construction works rose as follows: engineering works (+47.5%), non-residential buildings (+46.9%) and residential buildings (+29.5%).

Construction works indices

- percentages -

		January 2020 compared to:	
		December 2019	January 2019
Constructions – total	G	40.7	148.0
	S	120.9	144.5
- by structure elements:			
New constructions	G	44.1	140.8
	S	124.7	138.6
Capital repairs	G	31.8	140.4
	S	134.6	131.9
Maintenance and current repairs	G	35.8	181.1
	S	125.2	177.0
- by construction objects:			
Residential buildings	G	55.7	139.4
	S	138.9	129.5
Non-residential buildings	G	34.0	147.8
	S	95.6	146.9
Engineering works	G	39.3	154.4
	S	139.7	147.5

[Table data in xls format](#)

G = gross series; S = adjusted series according to the number of working days and to seasonality

Additional information:

- The **construction volume indices** are determined by deflating the value data with the construction cost indices by structure element and by construction object. The construction volume indices are calculated for the overall construction branch (section F of NACE Rev. 2), by structure element (new construction works, capital repair works, maintenance and current repair works) and by construction object (residential buildings, non-residential buildings and engineering works).
- The construction works indices overall are calculated as a weighted arithmetic mean of indices by structure element or of indices by construction object.
- Beside the gross series of construction volume indices, **indices that are adjusted by number of working days and seasonality** are also calculated on a monthly basis, through the **regressive method**, using the **JDEMETRA+ version 2.0** software package (**the TRAMO/SEATS method**), a method recommended by the European regulations concerning short-term indicators (Council Regulation No 1165/1998).

For the correct interpretation of the indicators, please see the [Methodological Notes attached to the press release on the homepage](#).

For additional information, please see the TEMPO online database of the NIS (the data for January 2020 will be available on March 16, 2020) and the Monthly Statistical Bulletin (date of issue March 27, 2020).

For comparative data at EU level, please see the Eurostat press release issued on Tuesday, March 17, 2020 at the address <http://ec.europa.eu/eurostat/web/main>.

The next issue of the press release will be on Thursday, April 16, 2020.

Press release archive: <https://insse.ro/cms/en/comunicate-de-pres-a-view>

Communication Directorate

E-mail: biroupresa@insse.ro

Tel: +4021 3181869