

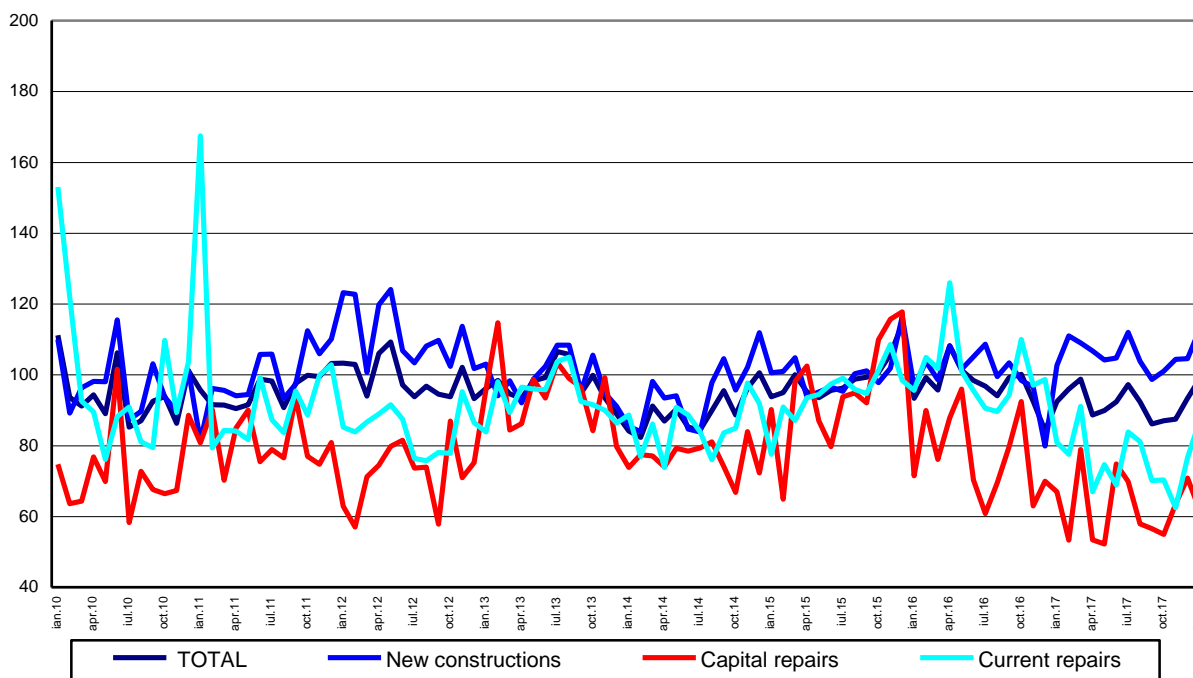
Domain: Construction

IN JANUARY 2018, THE VOLUME OF CONSTRUCTION WORKS¹ INCREASED BY 5.8% COMPARED TO DECEMBER 2017

- Compared to the same month of the previous year, the volume of construction works increased, as gross series, by 7.8% and, as adjusted series according to the number of working days and to seasonality, by 6.8%.

Monthly evolution of construction works, by structure elements, according to CANE Rev. 2 - January 2010-January 2018 - (adjusted series according to the number of working days and to seasonality)

- 2015=100 -

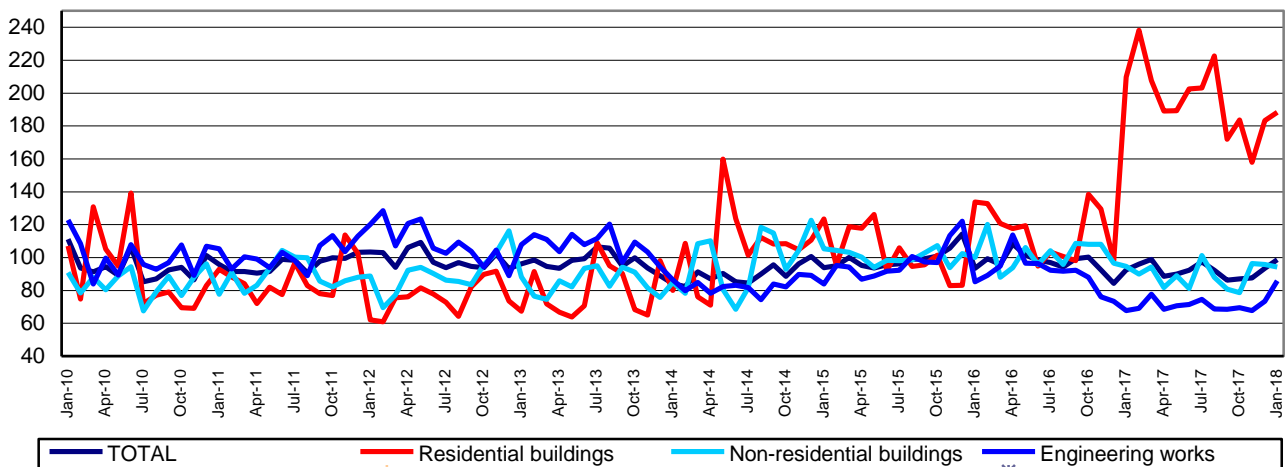


[Graph data in xls format](#)

¹ adjusted series according to the number of working days and to seasonality

**Monthly evolution of construction works, by construction objects,
according to CANE Rev. 2
- January 2010-January 2018 -
(adjusted series according to the number of working days and to seasonality)**

- 2015=100 -



[Graph data in xls format](#)

January 2018 compared to December 2017

The volume of construction works decreased, as gross series, by 66.2%, a decrease highlighted in all structure elements: in capital repair works (-79.5%), in maintenance and current repair works (-66.5%) and in new construction works (-63.4%).

By construction objects, the engineering works decreased by 69.3%, the non-residential buildings dropped by 65.1% and the residential buildings were down 60.8%.

The volume of construction works increased overall, as adjusted series according to the number of working days and to seasonality, by 5.8%, an increase highlighted in maintenance and current repair works (+13.4%) and in new construction works (+7.8%). There was a drop of 12.4% in capital repair works.

By construction objects, the volume of construction works rose in engineering works (+16.8%) and in residential buildings (+2.8%). The non-residential buildings decreased by 1.8%.

January 2018 compared to January 2017

The volume of construction works increased, as gross series, by 7.8%. By structure elements, there were rises of 9.9% in new construction works and 7.6% in maintenance and current repair works. The capital repair works dropped by 7.4%.

By construction objects, the volume of construction works rose in engineering works (+29.7%). The residential buildings were down 10.2% and the non-residential buildings decreased by 0.5%.

The volume of construction works increased, as adjusted series according to the number of working days and to seasonality, by 6.8%. By structure elements, there were rises of 9.7% in new construction works and 7.2% in maintenance and current repair works. There was a drop of 7.3% in capital repair works.

By construction objects, the volume of construction works rose in engineering works (+26.9). The residential buildings decreased by 10.2% and the non-residential buildings dropped by 0.6%.

Construction works indices

- percentages -

		January 2018 compared to:	
		December 2017	January 2017
Constructions - total	G	33.8	107.8
	S	105.8	106.8
- by structure elements:			
New constructions	G	36.6	109.9
	S	107.8	109.7
Capital repairs	G	20.5	92.6
	S	87.6	92.7
Maintenance and current repairs	G	33.5	107.6
	S	113.4	107.2
- by construction objects:			
Residential buildings	G	39.2	89.8
	S	102.8	89.8
Non-residential buildings	G	34.9	99.5
	S	98.2	99.4
Engineering works	G	30.7	129.7
	S	116.8	126.9

G = gross series; S = adjusted series according to the number of working days and to seasonality

[Table data in xls format](#)

Additional information:

IMPORTANT! In order to show the changes in the structure of the economy, starting with the publication of the data for the reference month **January 2018**, the base year used in the calculation of construction works indices was changed **from 2010 to 2015**. The change in the base year also involves the updating of the weighting system; the changes in the weighting system reflect the structural changes that occurred in the activities of the national economy. These changes led to the adequate recalculation and revision of the previously published data series. These changes will appear in press releases, statistical publications produced by the NIS and in the TEMPO online database.

The **construction volume indices** are determined by deflating the value data with the construction cost indices by structure element and by construction object. The construction volume indices are calculated for the overall construction branch (section F of CANE Rev. 2), by structure element (new construction works, capital repair works, maintenance and current repair works) and by construction object (residential buildings, non-residential buildings and engineering works).

The construction works indices overall are calculated as a weighted arithmetic mean of indices by structure element or of indices by construction object.

Beside the gross series of construction volume indices, **indices that are adjusted by number of working days and seasonality** are also calculated on a monthly basis, through the **regressive method**, a method recommended by the European regulations concerning short-term indicators (Council Regulation No 1165/1998).

For the correct interpretation of the indicators, please see the [Methodological Notes attached to the press release on the homepage](#).

For additional information, please see the statistical publication *Monthly Statistical Bulletin* (date of issue March 26, 2018) and the TEMPO online database of the NIS (the data for January 2018 will be available on March 16, 2018).

For comparable data with the other Member States of the European Union, please see the Eurostat press release issued on Monday, March 19, 2018 at the address <http://ec.europa.eu/eurostat/web/main>.

The next issue of the press release will be on Friday, April 13, 2018.

Press release archive: <http://www.insse.ro/cms/en/comunicate-de-presa-view>

Communication Directorate

E-mail: birou presa@insse.ro

Tel: +4021 3181869