

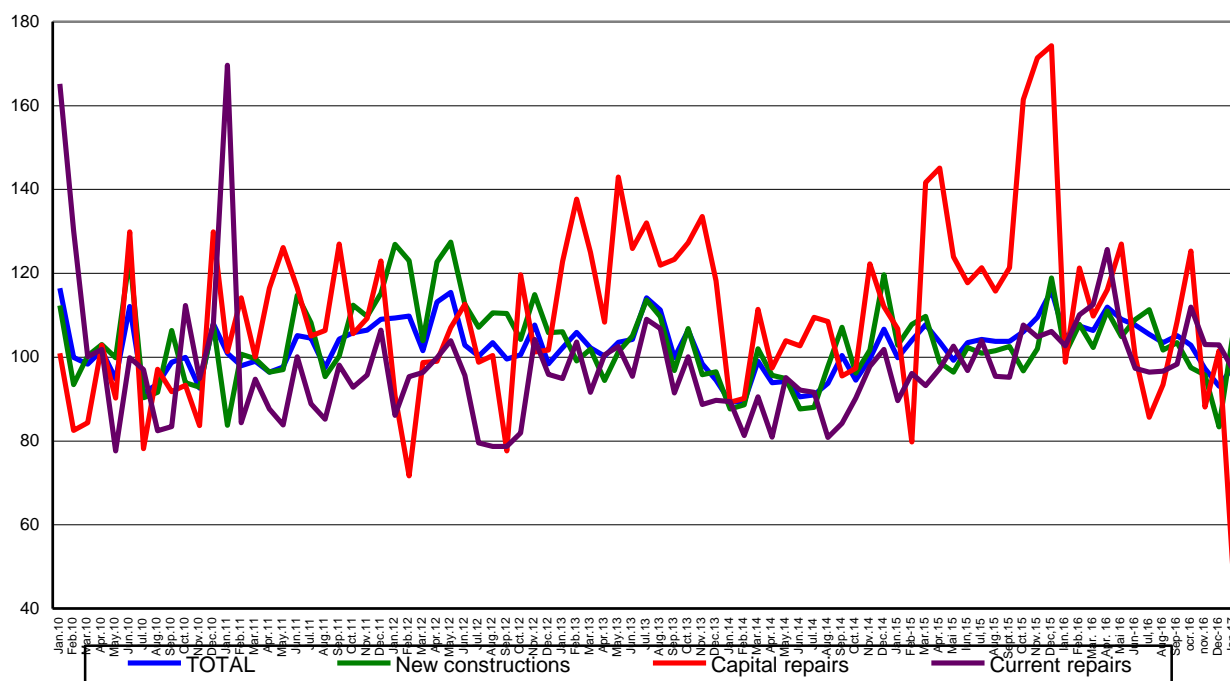
Domain: Construction

THE CONSTRUCTION WORKS DECREASED BY 1.1% IN JANUARY 2017 COMPARED TO JANUARY 2016

- Compared to the corresponding month of the previous year, the volume of construction works decreased, both as gross series and as adjusted series according to the number of working days and to seasonality by 1.1% and by 6.6%, respectively.

**Monthly evolution of construction works, by structure elements,
according to CANE Rev. 2
- January 2010 – January 2017-
(adjusted series according to the number of working days and to seasonality)**

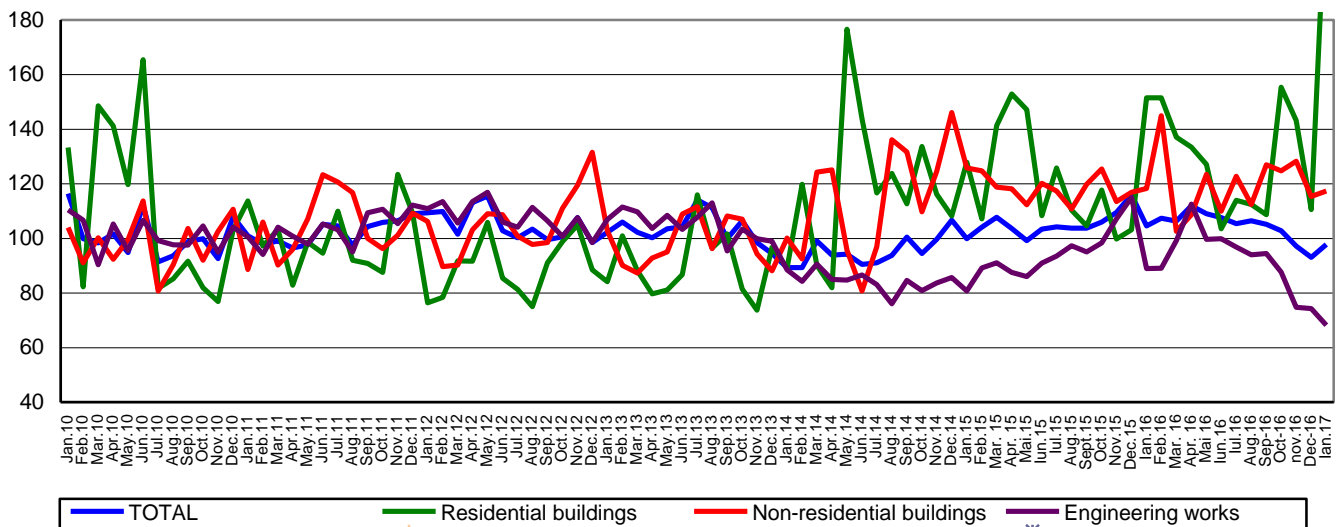
- 2010=100 -



Graph data in xls format

**Monthly evolution of construction works, by construction objects,
according to CANE Rev. 2
- January 2010 – January 2017 -
(adjusted series according to the number of working days and to seasonality)**

- 2010=100 -



[Graph data in xls format](#)

January 2017 compared to December 2016

The volume of construction works decreased as gross series by 66.5%, decrease highlighted in capital repairs works by 88.2%, maintenance and current repairs works by 72.4% and new construction works by 57.6%. By construction objects, there were drops in engineering works of 79.9%, in non-residential buildings of 63.9% and in residential buildings of 16.4%.

The volume of construction works increased per total, as adjusted series by the number of working days and by seasonality, by 5.1%, increase highlighted in new construction works by 26.3%. The capital repairs works and the maintenance and current repairs works decreased by 51.2% and by 5.7%, respectively.

By construction objects, the volume of construction works increased in residential buildings by 108.3% and in non-residential buildings by 1.7%. There were drops in engineering works of 8.3%.

January 2017 compared to January 2016

The volume of construction works decreased, as gross series, by 1.1%. By structure elements, there were drops in capital repairs works of 48.7% and in maintenance and current repairs works of 6.3%. The new construction works increased by 8.3%.

By construction objects, the volume of construction works decreased in engineering works by 30.0% and in non-residential buildings by 0.4%. There were rises in residential buildings of 67.4%.

The volume of construction works decreased, as adjusted series according to the number of working days and to seasonality, by 6.6%. By structure elements, there were drops in capital repairs works of 49.8% and in maintenance and current repairs works of 5.5%. The new construction works increased by 4.5%.

By construction objects, the volume of construction works decreased in engineering works by 23.3% and in non-residential buildings by 0.8%. There were rises in residential buildings of 52.0%.

Construction works indices

- percentage -

		January 2017 compared to:	
		December 2016	January 2016
Constructions - total	B	33.5	98.9
	S	105.1	93.4
- by structure elements:			
New constructions	B	42.4	108.3
	S	126.3	104.5
Capital repairs	B	11.8	51.3
	S	48.8	50.2
Maintenance and current repairs	B	27.6	93.7
	S	94.3	94.5
- by construction objects:			
Residential buildings	B	83.6	167.4
	S	208.3	152.0
Non-residential buildings	B	36.1	99.6
	S	101.7	99.2
Engineering works	B	20.1	70.0
	S	91.7	76.7

B= gross series; S= adjusted series according to the number of working days and to seasonality;

[Graphic data in xls format](#)

Additional Information:

For the correct interpretation of results, kindly see the [Methodological Note attached to the press release on the homepage](#).

For additional information, kindly see the statistical publication Monthly Statistical Bulletin (date of issue March 27, 2017) and the on line database TEMPO of INS (data for January 2017 will be available on March 15, 2017).

For comparable data with the other Member States of the European Union, kindly see the Eurostat press release, issued on Friday, March 17, 2017 at the address: <http://ec.europa.eu/eurostat/web/main>

The next issue of the press release will be on Thursday, April 13, 2017.

The archive of the press releases: <http://www.insse.ro/cms/en/comunicate-de-presa-view>

The Directorate of Communication

e-mail: biroupresa@insse.ro

Tel: +4021 3181869