

Domain: Industry

## THE TURNOVER IN INDUSTRY INCREASED, IN NOMINAL TERMS, BY 2.2% IN THE PERIOD 1.I-30.XI.2015

- In November 2015, **the turnover in industry, per total** (domestic and non-domestic market), decreased in nominal terms by **3.7%** compared to the previous month and increased by **1.9%** compared to the corresponding month of the previous year.
- In the period 1.I-30.XI.2015, compared to the period 1.I-30.XI.2014, **the turnover in industry, per total** (domestic and non-domestic market), increased in nominal terms by **2.2%**.

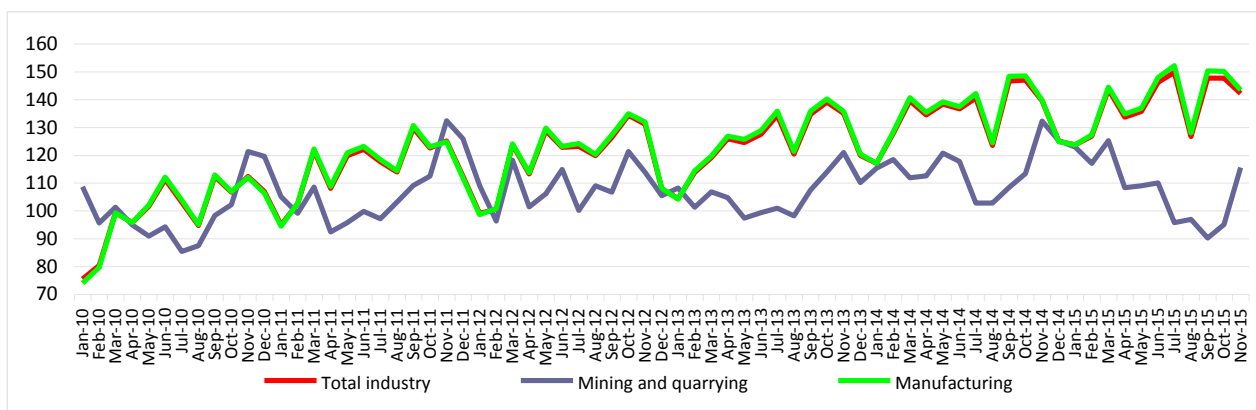
Turnover value indices in industry

	NOVEMBER 2015 in % compared to:		gross series 1.I-30.XI.2015/ 1.I-30.XI.2014 -%-
	OCTOBER 2015	NOVEMBER 2014	
<b>Industry - total</b>	<b>96.3</b>	<b>101.9</b>	<b>102.2</b>
- by sections:			
<b>Mining and quarrying</b>	<b>121.5</b>	<b>87.3</b>	<b>94.4</b>
<b>Manufacturing</b>	<b>95.6</b>	<b>102.5</b>	<b>102.5</b>
- by main industrial groups:			
Intermediate goods industry	94.9	101.1	103.2
Capital goods industry	98.1	113.5	108.4
Durable goods industry	97.4	105.0	105.7
Non-durable goods industry	95.4	103.5	102.4
Energy industry	97.1	62.5	77.2

[Table data in xls format](#)

Monthly evolution of turnover in industry, by CANE Rev. 2 sections  
- January 2010 – November 2015 -

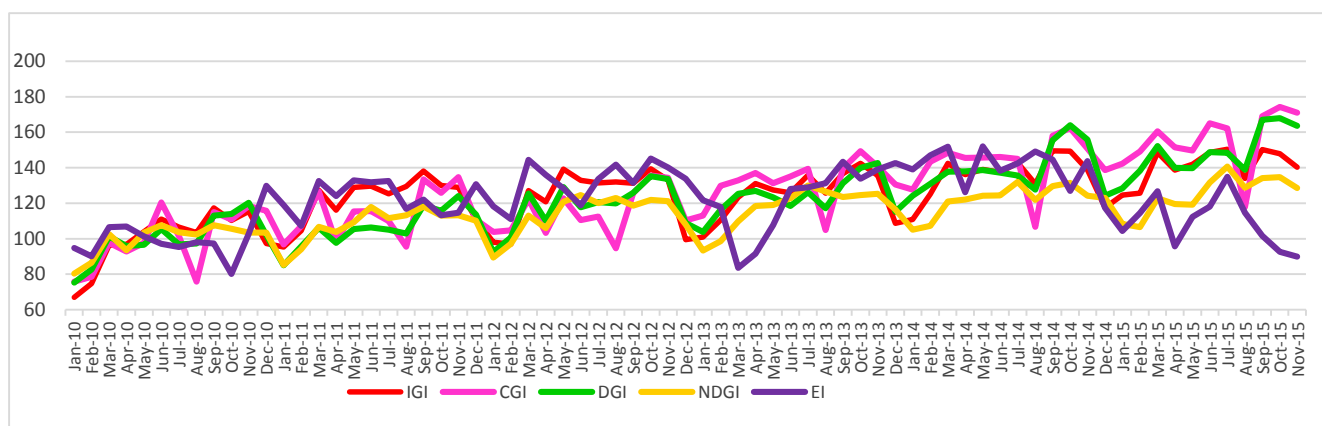
- 2010=100 -



[Graphic data in format xls \(XI.2014-XI.2015\)](#)

## Monthly evolution of turnover in industry, by main industrial groups - January 2010 – November 2015 -

- 2010=100 -



Intermediate goods industry (IGI); Capital goods industry (CGI); Durable goods industry (DGI); Non-durable goods industry (NDGI); Energy industry (EI)

[Graphic data in xls format \(XI.2014-XI.2015\)](#)

### November 2015 compared to October 2015

In November 2015, compared to the previous month, the turnover in industry per total decreased by 3.7% due to drops in manufacturing (-4.4%). There was an increase of 21.5% in mining and quarrying.

By main industrial groups, there were drops in all the sectors: intermediate goods industry (-5.1%), non-durable goods industry (-4.6%), energy industry (-2.9%), durable goods industry (-2.6 %) and capital goods industry (-1.9%).

### November 2015 compared to November 2014

Compared to November 2014, in November 2015, the turnover in industry increased per total by 1.9% due to rises in manufacturing (+2.5%). There was a decrease in mining and quarrying of 12.7%.

By main industrial groups, there were rises in turnover in the following sectors: capital goods industry (+13.5%), durable goods industry (+5.0%), non-durable goods industry (+3.5%) and intermediate goods industry (+1.1%). There were drops in energy industry (-37.5%).

### Period 1.I-30.XI.2015 compared to period 1.I-30.XI.2014

Compared to the period 1.I-30.XI.2014, in the period 1.I-30.XI.2015, the turnover in industry increased per total by 2.2% due to rises in manufacturing (+2.5%). There was a decrease of 5.6% in mining and quarrying.

By main industrial groups, there were rises in turnover in the following sectors: capital goods industry (+8.4%), durable goods industry (+5.7%), intermediate goods industry (+3.2%) and non-durable goods industry (+2.4%). There were drops in the energy industry (-22.8%).

### Additional information:

For the accurate interpretation of indicators, kindly see [“The Methodological Note” attached to the press release on the homepage.](#)

For additional information, kindly see the statistical publications Monthly Statistical Bulletin (date of issue January 22, 2016), Industry Statistical Bulletin (date of issue January 26, 2016) and the on line TEMPO data base of the NIS (data for November 2015 will be available on January 15th).

The next issue of the press release will be on Wednesday, February 10, 2016.

The archive of the press releases: <http://www.insse.ro/cms/ro/comunicate-de-presa-view>

### The Department of Communication

e-mail: [biroupresa@insse.ro](mailto:biroupresa@insse.ro)

Tel: +4021 3181869