

Domain: Industry

In June 2016, the turnover in industry increased, in nominal terms, by 3.2% compared to June 2015

- In June 2016, **the turnover in industry, per total** (domestic and non-domestic market), increased in nominal terms compared to the previous month by **5.2%** and compared to the corresponding month of the previous year by **3.2%**.
- In Semester I 2016, compared to Semester I 2015, **the turnover in industry, per total** (domestic and non-domestic market), increased in nominal terms by **4.3%**.

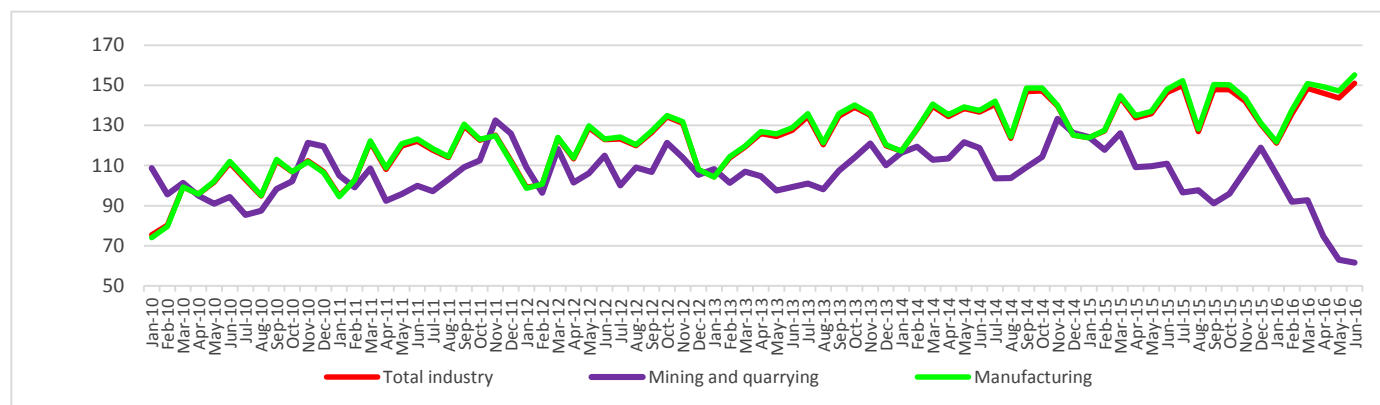
Turnover value indices in industry

| | JUNE 2016 in % compared to: | | gross series |
|------------------------------------|-----------------------------|--------------|--|
| | MAY 2016 | JUNE 2015 | 1.I-30.VI.2016/ 1.I-30.VI.2015 -%- |
| Industry - total | 105.2 | 103.2 | 104.3 |
| - by sections: | | | |
| <i>Mining and quarrying</i> | 97.8 | 55.6 | 70.2 |
| <i>Manufacturing</i> | 105.4 | 104.8 | 105.6 |
| - by main industrial groups: | | | |
| Intermediate goods industry | 103.1 | 98.5 | 99.5 |
| Capital goods industry | 108.7 | 111.1 | 110.8 |
| Durable goods industry | 100.6 | 116.4 | 120.3 |
| Non-durable goods industry | 106.4 | 105.7 | 107.3 |
| Energy industry | 97.7 | 78.4 | 83.3 |

Table data in xls format

Monthly evolution of turnover in industry, by CANE Rev. 2 sections
- January 2010 – June 2016 -

- 2010=100 -

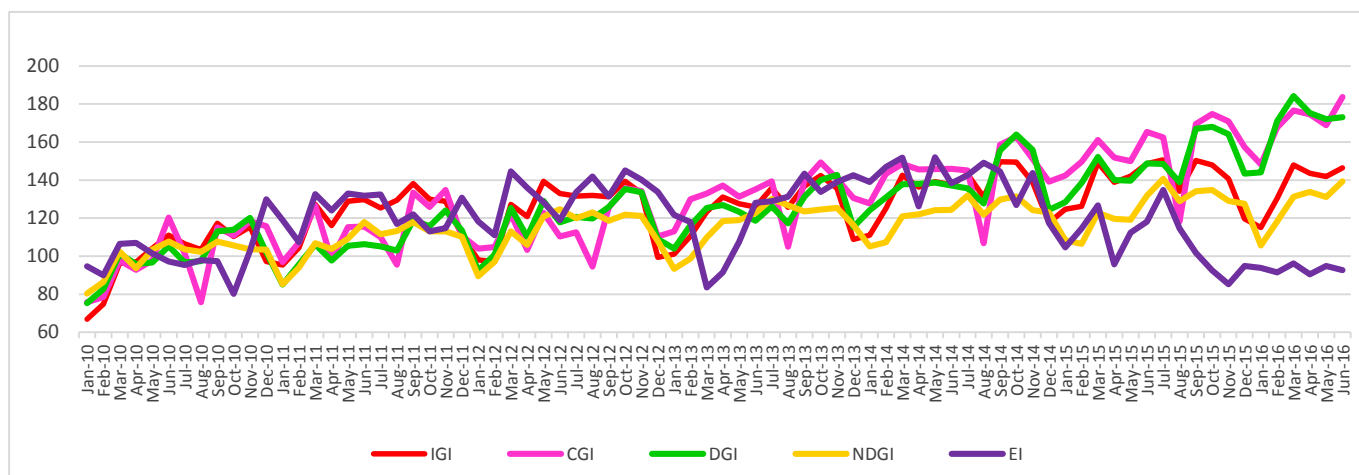


Graphic data in format xls (VI.2015-VI.2016)

Monthly evolution of turnover in industry, by main industrial groups

- January 2010 – June 2016 -

- 2010=100 -



Intermediate goods industry (IGI); Capital goods industry (CGI); Durable goods industry (DGI); Non-durable goods industry (NDGI); Energy industry (EI)

Graphic data in xls format (VI.2015-VI.2016)

June 2016 compared to May 2016

In June 2016, compared to the previous month, the turnover in industry per total increased by 5.2% due to rises in manufacturing (+5.4%). There was a decrease of 2.2% in mining and quarrying.

By main industrial groups, there were rises in the following sectors: capital goods industry (+8.7%), non-durable goods industry (+6.4%), intermediate goods industry (+3.1%) and durable goods industry (+0.6%). There were drops in energy industry of 2.3%.

June 2016 compared to June 2015

Compared to June 2015, in June 2016, the turnover in industry increased per total by 3.2% due to rises in manufacturing (+4.8%). There was a decrease of 44.4% in mining and quarrying.

By main industrial groups, there were rises in the following sectors: durable goods industry (+16.4%), capital goods industry (+11.1%) and non-durable goods industry (+5.7%). There were drops in energy industry (-21.6%) and intermediate goods industry (-1.5%).

Semester I 2016 compared to Semester I 2015

Compared to Semester I 2015, in Semester I 2016, the turnover in industry increased per total by 4.3% due to rises in manufacturing (+5.6%). There was a decrease of 29.8% in mining and quarrying.

By main industrial groups, there were rises in turnover in the following sectors: durable goods industry (+20.3%), capital goods industry (+10.8%) and non-durable goods industry (+7.3%). There were drops in energy industry (-16.7%) and in intermediate goods industry (-0.5%).

Additional information:

For the accurate interpretation of indicators, kindly see [“The Methodological Note” attached to the press release on the homepage.](#)

For additional information, kindly see the statistical publications Monthly Statistical Bulletin (date of issue August 26, 2016), Industry Statistical Bulletin (date of issue August 19, 2016) and the on line TEMPO database of the NIS (data for June 2016 will be available on August 16, 2016).

The next issue of the press release will be on Monday, September 12, 2016.

The archive of the press releases: <http://www.insse.ro/cms/en/comunicate-de-presa-view>

The Directorate of Communication

e-mail: birou presa@insse.ro

Tel: +4021 3181869