

Domain: Trade - services

## In 2017, the wholesale turnover increased by 7.5% compared to 2016

- As against the previous month, in December 2017 **the wholesale turnover (excluding the trade with motor vehicles and motorcycles)**, in nominal terms, decreased as gross series by **7.0%** and increased as adjusted series according to the number of working days and to seasonality by **1.0%**.
- As against the corresponding month of the previous year, **the wholesale turnover (excluding the trade with motor vehicles and motorcycles)**, in nominal terms, increased both as gross series by **6.8%** and as adjusted series according to the number of working days and to seasonality by **12.0%**.
- In 2017, as against 2016, **the wholesale turnover (excluding the trade with motor vehicles and motorcycles)**, in nominal terms, increased as gross series by **7.5%**.

**Monthly evolution of the wholesale turnover in accordance to CANE Rev. 2**  
**(adjusted series according to the number of working days and to seasonality)**  
- January 2010 - December 2017 -

-2010=100 -

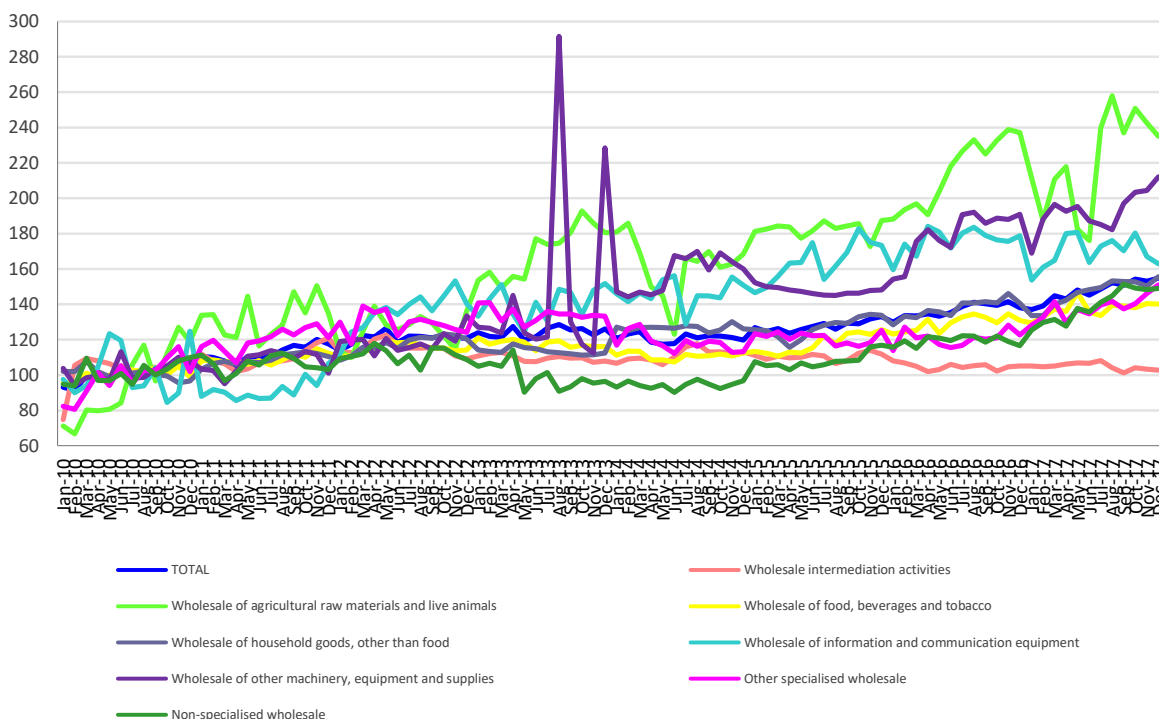


Chart data in xls (XII.2016-XII.2017)

## Indices of the wholesale turnover

		DECEMBER 2017 in % as against :		Year 2017/ Year 2016 -%-
		NOVEMBER 2017	DECEMBER 2016	
<b>TOTAL</b>	<b>B</b>	<b>93.0</b>	<b>106.8</b>	<b>107.5</b>
	<b>S</b>	<b>101.0</b>	<b>112.0</b>	<b>-</b>
Wholesale intermediation activities	B	96.5	94.8	98.8
	S	99.5	97.9	-
Wholesale of agricultural raw materials and live animals	B	82.2	96.6	105.2
	S	96.9	99.1	-
Wholesale of food, beverages and tobacco	B	102.8	104.6	105.9
	S	99.8	107.0	-
Wholesale of household goods, other than food	B	97.8	108.5	106.8
	S	103.6	110.8	-
Wholesale of information and communication equipment	B	91.5	95.0	98.6
	S	97.5	91.2	-
Wholesale of other machinery, equipment and supplies	B	103.5	112.4	105.0
	S	103.7	111.0	-
Other specialised wholesale	B	80.9	119.0	114.6
	S	103.4	123.0	-
Non-specialised wholesale	B	87.6	116.6	116.5
	S	100.4	127.7	-

*Note: B= gross series; S= adjusted series according to the number of working days and to seasonality*

[Table data in xls format](#)

### December 2017 as against November 2017

As against the previous month, in December 2017 the **wholesale turnover (excluding the trade with motor vehicles and motorcycles)**, gross series, in nominal terms, globally decreased by 7.0% due to the drops registered by the other specialised wholesale (-19.1%), by the wholesale of agricultural raw materials and live animals (-17.8%), by the non-specialised wholesale (-12.4%), by the wholesale of information and communication equipment (-8.5%), by the wholesale intermediation activities (-3.5%) and by the wholesale of household goods, other than food (-2.2%). Increases were registered by the wholesale of other machinery, equipment and supplies (+3.5%) and by the wholesale of food, beverages and tobacco and (+2.8%).

As against the previous month, in December 2017 **the wholesale turnover (excluding the trade with motor vehicles and motorcycles)**, adjusted series according to the number of working days and to seasonality, in nominal terms, globally increased by 1.0% due to the increases registered by the wholesale of other machinery, equipment and supplies (+3.7%), by the wholesale of household goods, other than food (+3.6%), by the other specialised wholesale (+3.4%) and by the non-specialised wholesale (+0.4%). Drops were registered by the wholesale of agricultural raw materials and live animals (-3.1%), by the wholesale of information and communication equipment (-2.5%), by the wholesale intermediation activities (-0.5%) and by the wholesale of food, beverages and tobacco (-0.2%).

### December 2017 as against December 2016

As against December 2016, in December 2017 **the wholesale turnover (excluding the trade with motor vehicles and motorcycles)**, gross series, in nominal terms, registered an increase of 6.8% due to the increases registered by the other specialised wholesale (+19.0%), by the non-specialised wholesale (+16.6%), by the wholesale of other machinery, equipment and supplies (+12.4%), by the wholesale of household goods, other than food (+8.5%) and by the wholesale of food, beverages and tobacco (+4.6%). Drops were registered by the wholesale intermediation

activities (-5.2%), by the wholesale of information and communication equipment (-5.0%) and by the wholesale of agricultural raw materials and live animals (-3.4%).

As against December 2016, in December 2017 **the wholesale turnover (excluding the trade with motor vehicles and motorcycles)**, adjusted series according to the number of working days and to seasonality, in nominal terms, registered an increase of 12.0% due to the increases registered by the non-specialised wholesale (+27.7%), by the other specialised wholesale (+23.0%), by the wholesale of other machinery, equipment and supplies (+11.0%), by the wholesale of household goods, other than food (+10.8%) and by the wholesale of food, beverages and tobacco (+7.0%). Drops were registered by the wholesale of information and communication equipment (-8.8%), by the wholesale intermediation activities (-2.1%) and by the wholesale of agricultural raw materials and live animals (-0.9%).

### ***Year 2017 as against 2016***

In 2017, as against 2016, **the wholesale turnover (excluding the trade with motor vehicles and motorcycles)**, gross series, in nominal terms, registered an increase of 7.5% due to the increases registered by the non-specialised wholesale (+16.5%), by the other specialised wholesale (+14.6%), by the wholesale of household goods, other than food (+6.8%), by the wholesale of food, beverages and tobacco (+5.9%), by the wholesale of agricultural raw materials and live animals (+5.2%) and by the wholesale of other machinery, equipment and supplies (+5.0%). Drops were registered by the wholesale of information and communication equipment (-1.4%) and by the wholesale intermediation activities (-1.2%).

### **Additional information:**

- ✓ The turnover represents the total revenue recorded by the company during the reporting period, obtained from both the main activity and the secondary activities performed by them. The turnover does not include VAT and the revenue from the sale or transfer of assets.
- ✓ The turnover volume indices of the retail are Laspeyres type indices. The first indices obtained are at the level of CANE Rev. 2 group, then, by aggregations, indices at total level are obtained. The weights used for aggregation are calculated based on the turnover according to the results of the Business Structural Survey from the reference year (2010).

For the correct interpretation of the indicators, please see the [Methodological Notes attached to the press release on the homepage](#).

For more information, see the Monthly Statistical Bulletin (date of issue February 26, 2018) and the INS TEMPO online database (the data for December 2017 will be available on February 15, 2018).

The next issue of the press release will be on Friday, March 16, 2018.

Press release archive: <http://www.insse.ro/cms/en/comunicate-de-presa-view>

### **The Directorate of Communication**

e-mail: [birouipresa@insse.ro](mailto:birouipresa@insse.ro)

Tel: +4021 3181869