

Domain: Trade – services

THE WHOLESALE TURNOVER INCREASED BY 2.9% IN THE 1.I-30.IX.2015 PERIOD

- As against the previous month, in September 2015 **the wholesale turnover (excluding the trade with motor vehicles and motorcycles)**, in nominal terms, increased both as gross series (by **7.6%**) and as adjusted series according to the number of working days and to seasonality (by **3.7%**).
- As against the corresponding month of the previous year, **the wholesale turnover (excluding the trade with motor vehicles and motorcycles)**, in nominal terms, rose both as gross series (by **4.5%**) and as adjusted series according to the number of working days and to seasonality (by **4.1%**).
- As against the 1.I-30.IX.2014 period, in the 1.I-30.IX.2015 period **the wholesale turnover (excluding the trade with motor vehicles and motorcycles)**, in nominal terms, was up **2.9%** as gross series and **2.7%** as adjusted series according to the number of working days and to seasonality.

**Monthly evolution of the wholesale turnover in accordance with CANE Rev. 2
(adj. series according to the number of working days and to seasonality)
- January 2010-September 2015 -**

-2010=100 -

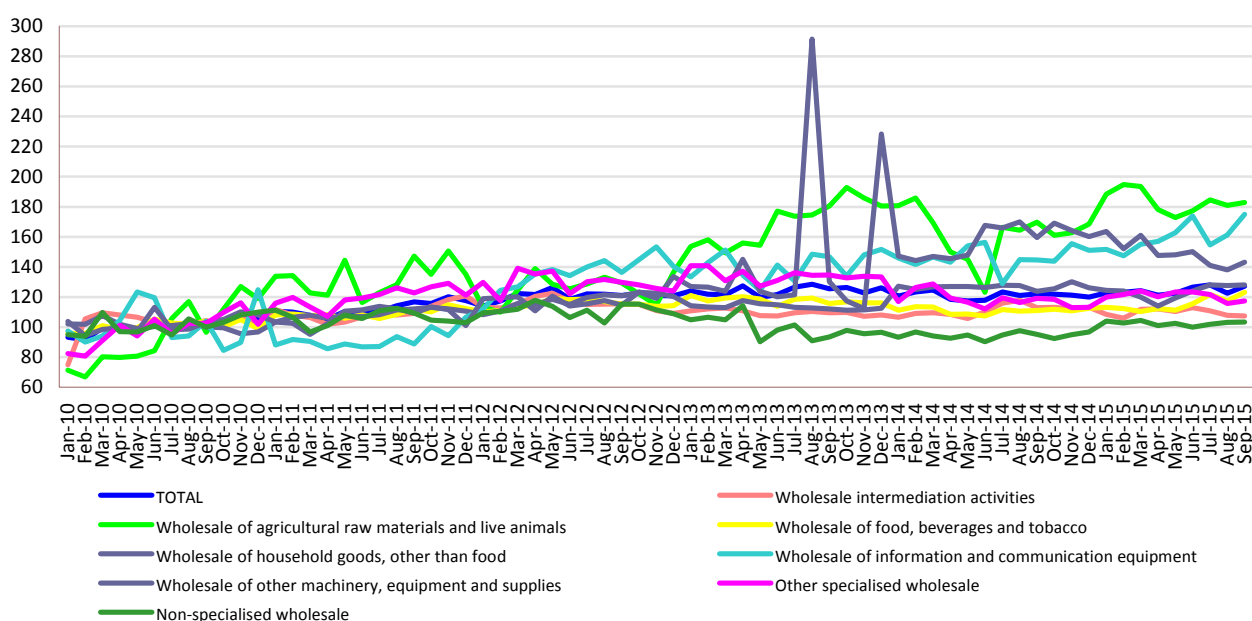


Chart data in xls (IX.2014-IX.2015)

Indices of the wholesale turnover

		SEPTEMBER 2015 in % as against:		1.I-30.IX.2015/ 1.I-30.IX.2014 -%-
		AUGUST 2015	SEPTEMBER 2014	
TOTAL	B	107.6	104.5	102.9
	S	103.7	104.1	102.7
Wholesale intermediation activities	B	102.8	93.3	97.1
	S	99.4	95.0	99.1
Wholesale of agricultural raw materials and live animals	B	118.1	105.7	114.9
	S	101.1	107.8	113.7
Wholesale of food, beverages and tobacco	B	100.4	112.2	104.4
	S	104.8	110.9	104.1
Wholesale of household goods, other than food	B	106.0	104.9	97.5
	S	100.4	103.6	97.5
Wholesale of information and communication equipment	B	130.8	124.3	113.5
	S	108.6	121.0	110.2
Wholesale of other machinery, equipment and supplies	B	112.5	89.6	92.7
	S	103.7	89.8	96.4
Other specialised wholesale	B	107.9	97.3	101.2
	S	101.5	98.5	101.1
Non-specialised wholesale	B	111.3	112.0	111.4
	S	100.1	108.8	108.8

Note: B = gross series; S = adjusted series according to the number of working days and to seasonality

[Table data in xls format](#)

September 2015 as against August 2015

As against the previous month, in September 2015 **the wholesale turnover (excluding the trade with motor vehicles and motorcycles)**, gross series, in nominal terms, globally increased by 7.6% due to the rises registered by the wholesale of information and communication equipment (+30.8%), by the wholesale of agricultural raw materials and live animals (+18.1%), by the wholesale of other machinery, equipment and supplies (+12.5%), by non-specialised wholesale (+11.3%), by other specialised wholesale (+7.9%), by the wholesale of household goods, other than food (+6.0%), by the wholesale intermediation activities (+2.8%) and by the wholesale of food, beverages and tobacco (+0.4%).

As against the previous month, in September 2015 **the wholesale turnover (excluding the trade with motor vehicles and motorcycles)**, adjusted series according to the number of working days and to seasonality, in nominal terms, globally increased by 3.7% due to the rises registered by the wholesale of information and communication equipment (+8.6%), by the wholesale of food, beverages and tobacco (+4.8%), by the wholesale of other machinery, equipment and supplies (+3.7%), by other specialised wholesale (+1.5%), by the wholesale of agricultural raw materials and live animals (+1.1%), by the wholesale of household goods, other than food (+0.4%) and by the non-specialised wholesale (+0.1%). A drop was registered by the wholesale intermediation activities (-0.6%).

September 2015 as against September 2014

As against September 2014, in September 2015 **the wholesale turnover (excluding the trade with motor vehicles and motorcycles)**, gross series, in nominal terms, registered an increase of 4.5% due to the rises registered by the wholesale of information and communication equipment (+24.3%), by the wholesale of food, beverages and tobacco (+12.2%), by the non-specialised wholesale (+12.0%), by the wholesale of agricultural raw materials and live animals (+5.7%) and by the wholesale of households goods, other than food (+4.9%). Drops were registered by the wholesale

of other machinery, equipment and supplies (-10.4%), by the wholesale intermediation activities (-6.7%) and by the other specialised wholesale (-2.7%).

As against September 2014, in September 2015 **the wholesale turnover (excluding the trade with motor vehicles and motorcycles)**, adjusted series according to the number of working days and to seasonality, in nominal terms, registered an increase of 4.1% due to the increments registered by the wholesale of information and communication equipment (+21.0%), by the wholesale of food, beverages and tobacco (+10.9%), by the non-specialised wholesale (+8.8%), by the wholesale of agricultural raw materials and live animals (+7.8%) and by the wholesale of household goods, other than food (+3.6%). Drops were registered by the wholesale of other machinery, equipment and supplies (-10.2%), by the wholesale intermediation activities (-5.0%) and by the other specialised wholesale (-1.5%).

The 1.I-30.IX.2015 period as against the 1.I-30.IX.2014 period

As against the 1.I-30.IX.2014 period, in the 1.I-30.IX.2015 period **the wholesale turnover (excluding the trade with motor vehicles and motorcycles)**, gross series, in nominal terms, registered an increase of 2.9% due to the increments registered by the wholesale of agricultural raw materials and live animals (+14.9%), by the wholesale of information and communication equipment (+13.5%), by the non-specialised wholesale (+11.4%), by the wholesale of food, beverages and tobacco (+4.4%) and by the other specialised wholesale (+1.2%). Drops were registered by the wholesale of other machinery, equipment and supplies (-7.3%), by the wholesale intermediation activities (-2.9%) and by the wholesale of household goods, other than food (-2.5%).

As against the 1.I-30.IX.2014 period, in the 1.I-30.IX.2015 period **the wholesale turnover (excluding the trade with motor vehicles and motorcycles)**, adjusted series according to the number of working days and to seasonality, in nominal terms, registered an increase of 2.7% due to the increments registered by the wholesale of agricultural raw materials and live animals (+13.7%), by the wholesale of information and communication equipment (+10.2%), by the non-specialised wholesale (+8.8%), by the wholesale of food, beverages and tobacco (+4.1%) and by the other specialised wholesale (+1.1%). Drops were registered by the wholesale of other machinery, equipment and supplies (-3.6%), by the wholesale of household goods, other than food (-2.5%) and by the wholesale intermediation activities (-0.9%).

Additional information:

For the correct interpretation of the indicators, please see the [Methodological Notes attached to the press release on the homepage](#).

For more information, see the Monthly Statistical Bulletin (date of issue November 19, 2015) and the INS TEMPO online database (the data for September 2015 will be available as of November 14).

The next issue of the press release will be on Friday, December 11, 2015.

Press release archive: <http://www.insse.ro/cms/en/content/press-releases>

The Communication Department

e-mail: biroupresa@insse.ro

Tel: +4021 3181869