

Domain: Trade - services

THE WHOLESALE TURNOVER INCREASED BY 1.5%

- As against the previous month, in August 2015 **the wholesale turnover (excluding the trade with motor vehicles and motorcycles)**, in nominal terms, decreased both as gross series by **5.2%** and as adjusted series according to the number of working days and to seasonality by **4.9%**.
- As against the corresponding month of the previous year, **the wholesale turnover (excluding the trade with motor vehicles and motorcycles)**, in nominal terms, increased both as gross series by **1.5%** and as adjusted series according to the number of working days and to seasonality by **0.6%**.
- As against the period 1.I-31.VIII.2014, in the period 1.I-31.VIII.2015 **the wholesale turnover (excluding the trade with motor vehicles and motorcycles)**, in nominal terms, increased both as gross series by **2.6%** and as adjusted series according to the number of working days and to seasonality by **2.5%**.

Monthly evolution of the wholesale turnover in accordance to CANE Rev. 2
(adjusted series according to the number of working days and to seasonality)
- January 2010 - August 2015 -

-2010=100 -

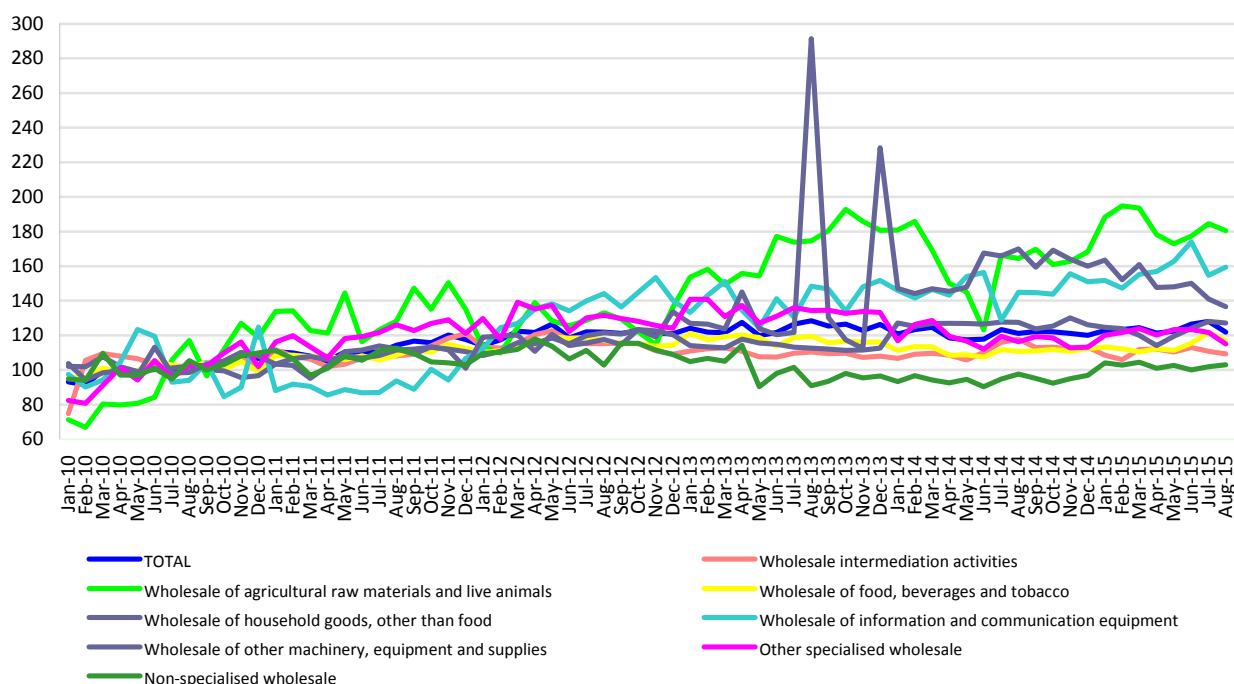


Chart data in xls (VIII.2014-VIII.2015)

Indices of the wholesale turnover

		AUGUST 2015 in % as against:		1.I-31.VIII.2015/ 1.I-31.VIII.2014 -%-
		JULY 2015	AUGUST 2014	
TOTAL	B	94.8	101.5	102.6
	S	95.1	100.6	102.5
Wholesale intermediation activities	B	94.1	90.2	97.7
	S	98.6	92.8	99.8
Wholesale of agricultural raw materials and live animals	B	84.6	106.7	116.9
	S	97.8	109.8	114.4
Wholesale of food, beverages and tobacco	B	97.9	106.2	103.4
	S	96.0	105.6	103.1
Wholesale of household goods, other than food	B	97.3	102.8	96.5
	S	99.2	99.6	96.7
Wholesale of information and communication equipment	B	102.8	116.1	112.0
	S	103.1	110.1	108.7
Wholesale of other machinery, equipment and supplies	B	95.7	78.3	93.1
	S	96.9	80.3	97.2
Other specialised wholesale	B	93.2	97.5	101.6
	S	94.5	98.8	101.4
Non-specialised wholesale	B	96.3	110.2	111.3
	S	101.0	105.5	108.8

Note: B= gross series; S= adjusted series according to the number of working days and to seasonality

[Table data in xls format](#)

August 2015 as against July 2015

As against the previous month, in August 2015 the **wholesale turnover (excluding the trade with motor vehicles and motorcycles)**, gross series, in nominal terms, globally decreased by 5.2% due to the drops registered by the wholesale of agricultural raw materials and live animals (-15.4%), by the other specialised wholesale (-6.8%), by the wholesale intermediation activities (-5.9%), by the wholesale of other machinery, equipment and supplies (-4.3%), by the non-specialised wholesale (-3.7%), by the wholesale of household goods, other than food (-2.7%) and by the wholesale of food, beverages and tobacco (-2.1%). The wholesale of information and communication equipment increased by 2.8%.

As against the previous month, in August 2015 the **wholesale turnover (excluding the trade with motor vehicles and motorcycles)**, adjusted series according to the number of working days and to seasonality, in nominal terms, globally decreased by 4.9% due to the drops registered by the other specialised wholesale (-5.5%), by the wholesale of food, beverages and tobacco (-4.0%), by the wholesale of other machinery, equipment and supplies (-3.1%), by the wholesale of agricultural raw materials and live animals (-2.2%), by the wholesale intermediation activities (-1.4%) and by the wholesale of household goods, other than food (-0.8%). Increases were registered by the wholesale of information and communication equipment (+3.1%) and by the non-specialised wholesale (+1.0%).

August 2015 as against August 2014

As against August 2014, in August 2015 **the wholesale turnover (excluding the trade with motor vehicles and motorcycles)**, gross series, in nominal terms, registered an increase of 1.5% due to the increments registered by the wholesale of information and communication equipment (+16.1%), by the non-specialised wholesale (+10.2%), by the wholesale of agricultural raw materials and live animals (+6.7%), by the wholesale of food, beverages and tobacco (+6.2%) and by the wholesale of household goods, other than food (+2.8%). Drops were registered by the wholesale of other machinery, equipment and supplies (-21.7%), by the wholesale intermediation activities (-9.8%) and by the other specialised wholesale (-2.5%).

As against August 2014, in August 2015 **the wholesale turnover (excluding the trade with motor vehicles and motorcycles)**, adjusted series according to the number of working days and to seasonality, in nominal terms, registered an increase of 0.6% due to the increments registered by the wholesale of information and communication equipment (+10.1%), by the wholesale of agricultural raw materials and live animals (+9.8%), by the wholesale of food, beverages and tobacco (+5.6%) and by the non-specialised wholesale (+5.5%). Drops were registered by the wholesale of other machinery, equipment and supplies (-19.7%), by the wholesale intermediation activities (-7.2%), by the other specialised wholesale (-1.2%) and by the wholesale of household goods, other than food (-0.4%).

Period 1.I-31.VIII.2015 as against period 1.I-31.VIII.2014

As against the period 1.I-31.VIII.2014, in the period 1.I-31.VIII.2015 **the wholesale turnover (excluding the trade with motor vehicles and motorcycles)**, gross series, in nominal terms, registered an increase of 2.6% due to the increments registered by the wholesale of agricultural raw materials and live animals (+16.9%), by the wholesale of information and communication equipment (+12.0%), by the non-specialised wholesale (+11.3%), by the wholesale of food, beverages and tobacco (+3.4%) and by the other specialised wholesale (+1.6%). Drops were registered by the wholesale of other machinery, equipment and supplies (-6.9%), by the wholesale of household goods, other than food (-3.5%) and by the wholesale intermediation activities (-2.3%).

As against the period 1.I-31.VIII.2014, in the period 1.I-31.VIII.2015 **the wholesale turnover (excluding the trade with motor vehicles and motorcycles)**, adjusted series according to the number of working days and to seasonality, in nominal terms, registered an increase of 2.5% due to the increments registered by the wholesale of agricultural raw materials and live animals (+14.4%), by the non-specialised wholesale (+8.8%), by the wholesale of information and communication equipment (+8.7%), by the wholesale of food, beverages and tobacco (+3.1%) and by the other specialised wholesale (+1.4%). Drops were registered by the wholesale of household goods, other than food (-3.3%), by the wholesale of other machinery, equipment and supplies (-2.8%) and by the wholesale intermediation activities (-0.2%).

Additional information:

For the correct interpretation of the indicators, please see the [Methodological Notes attached to the press release on the homepage](#).

For more information, see the Monthly Statistical Bulletin (date of issue October 19, 2015) and the INS TEMPO online database (the data for August 2015 will be available on October 14).

The next issue of the press release will be on Friday, November 13, 2015.

Press release archive: <http://www.insse.ro/cms/en/content/press-releases>

The Communication Department

e-mail: birou presa@insse.ro

Tel: +4021 3181869