

Domain: Trade - services

## In July 2016, the wholesale turnover increased by 4.7% compared to July 2015

- As against the previous month, in July 2016 **the wholesale turnover (excluding the trade with motor vehicles and motorcycles)**, in nominal terms, increased both as gross series by **9.0%** and as adjusted series according to the number of working days and to seasonality by **1.6%**.
- As against the corresponding month of the previous year, **the wholesale turnover (excluding the trade with motor vehicles and motorcycles)**, in nominal terms, increased both as gross series by **4.7%** and as adjusted series according to the number of working days and to seasonality by **6.6%**.
- As against the period 1.I-31.VII.2015, in the period 1.I-31.VII.2016 **the wholesale turnover (excluding the trade with motor vehicles and motorcycles)**, in nominal terms, increased both as gross series and as adjusted series according to the number of working days and to seasonality by **7.0%** and by **6.2%**, respectively.

**Monthly evolution of the wholesale turnover in accordance to CANE Rev. 2**  
**(adjusted series according to the number of working days and to seasonality)**  
- January 2010 - July 2016 -

-2010=100 -

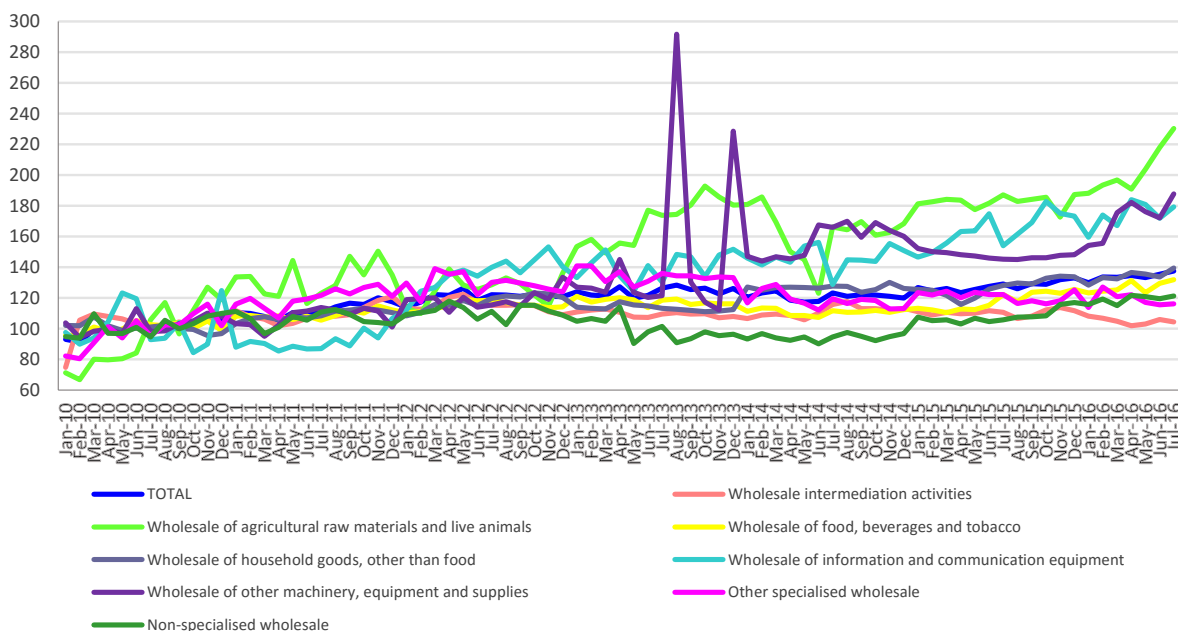


Chart data in xls (VII.2015-VII.2016)

## Indices of the wholesale turnover

		JULY 2016 in % as against :		1.I-31.VII.2016/ 1.I-31.VII.2015
		JUNE 2016	JULY 2015	-%-
<b>TOTAL</b>	<b>B</b>	<b>109.0</b>	<b>104.7</b>	<b>107.0</b>
	<b>S</b>	<b>101.6</b>	<b>106.6</b>	<b>106.2</b>
Wholesale intermediation activities	B	93.6	89.7	95.1
	S	98.5	94.2	95.1
Wholesale of agricultural raw materials and live animals	B	192.2	117.7	110.8
	S	105.7	123.0	111.2
Wholesale of food, beverages and tobacco	B	103.8	106.9	112.1
	S	101.8	107.9	111.3
Wholesale of household goods, other than food	B	103.3	105.9	109.7
	S	104.4	108.9	109.0
Wholesale of information and communication equipment	B	83.2	110.9	108.5
	S	104.3	116.4	109.9
Wholesale of other machinery, equipment and supplies	B	102.4	134.3	124.8
	S	109.1	129.4	115.9
Other specialised wholesale	B	104.8	91.6	96.8
	S	100.6	95.1	97.1
Non-specialised wholesale	B	99.3	109.2	113.9
	S	101.5	114.7	112.8

*Note: B= gross series; S= adjusted series according to the number of working days and to seasonality*

[Table data in xls format](#)

### July 2016 as against June 2016

As against the previous month, in July 2016 the **wholesale turnover (excluding the trade with motor vehicles and motorcycles)**, gross series, in nominal terms, globally increased by 9.0% due to the increments registered by the wholesale of agricultural raw materials and live animals (+92.2%), by the other specialised wholesale (+4.8%), by the wholesale of food, beverages and tobacco (+3.8%), by the wholesale of household goods, other than food (+3.3%) and by the wholesale of other machinery, equipment and supplies (+2.4%). Drops were registered by the wholesale of information and communication equipment (-16.8%), by the wholesale intermediation activities (-6.4%) and by the non-specialised wholesale (-0.7%).

As against the previous month, in July 2016 the **wholesale turnover (excluding the trade with motor vehicles and motorcycles)**, adjusted series according to the number of working days and to seasonality, in nominal terms, globally increased by 1.6% due to the increments registered by the wholesale of other machinery, equipment and supplies (+9.1%), by the wholesale of agricultural raw materials and live animals (+5.7%), by the wholesale of household goods, other than food (+4.4%), by the wholesale of information and communication equipment (+4.3%), by the wholesale of food, beverages and tobacco (+1.8%), by the non-specialised wholesale (+1.5%) and by the other specialised wholesale (+0.6%). Drops were registered by the wholesale intermediation activities (-1.5%).

## July 2016 as against July 2015

As against July 2015, in July 2016 **the wholesale turnover (excluding the trade with motor vehicles and motorcycles)**, gross series, in nominal terms, registered an increase of 4.7% due to the increments registered by the wholesale of other machinery, equipment and supplies (+34.3%), by the wholesale of agricultural raw materials and live animals (+17.7%), by the wholesale of information and communication equipment (+10.9%), by the non-specialised wholesale (+9.2%), by the wholesale of food, beverages and tobacco (+6.9%) and by the wholesale of household goods, other than food (+5.9%). Drops were registered by the wholesale intermediation activities (-10.3%) and by the other specialised wholesale (-8.4%).

As against July 2015, in July 2016 **the wholesale turnover (excluding the trade with motor vehicles and motorcycles)**, adjusted series according to the number of working days and to seasonality, in nominal terms, registered an increase of 6.6% due to the increments registered by the wholesale of other machinery, equipment and supplies (+29.4%), by the wholesale of agricultural raw materials and live animals (+23.0%), by the wholesale of information and communication equipment (+16.4%), by the non-specialised wholesale (+14.7%), by the wholesale of household goods, other than food (+8.9%) and by the wholesale of food, beverages and tobacco (+7.9%). Drops were registered by the wholesale intermediation activities (-5.8%) and by the other specialised wholesale (-4.9%).

## Period 1.I-31.VII.2016 as against period 1.I-31.VII.2015

As against the period 1.I-31.VII.2015, in the period 1.I-31.VII.2016 **the wholesale turnover (excluding the trade with motor vehicles and motorcycles)**, gross series, in nominal terms, registered an increase of 7.0% due to the increments registered by the wholesale of other machinery, equipment and supplies (+24.8%), by the non-specialised wholesale (+13.9%), by the wholesale of food, beverages and tobacco (+12.1%), by the wholesale of agricultural raw materials and live animals (+10.8%), by the wholesale of household goods, other than food (+9.7%) and by the wholesale of information and communication equipment (+8.5%). Drops were registered by the wholesale intermediation activities (-4.9%) and by the other specialised wholesale (-3.2%).

As against the period 1.I-31.VII.2015, in the period 1.I-31.VII.2016 **the wholesale turnover (excluding the trade with motor vehicles and motorcycles)**, adjusted series according to the number of working days and to seasonality, in nominal terms, registered an increase of 6.2% due to the increments registered by the wholesale of other machinery, equipment and supplies (+15.9%), by the non-specialised wholesale (+12.8%), by the wholesale of food, beverages and tobacco (+11.3%), by the wholesale of agricultural raw materials and live animals (+11.2%), by the wholesale of information and communication equipment (+9.9%) and by the wholesale of household goods, other than food (+9.0%). Drops were registered by the wholesale intermediation activities (-4.9%) and by the other specialised wholesale (-2.9%).

### Additional information:

For the correct interpretation of the indicators, please see the [Methodological Notes attached to the press release on the homepage](#).

For more information, see the Monthly Statistical Bulletin (date of issue September 26, 2016) and the INS TEMPO online database (the data for July 2016 will be available on September 15, 2016).

The next issue of the press release will be on Thursday, October 13, 2016.

Press release archive: <http://www.insse.ro/cms/en/comunicate-de-pres-a-view>

**The Communication Department**

e-mail: [birouipresa@insse.ro](mailto:birouipresa@insse.ro)

Tel: +4021 3181869