

Domain: Trade - services

In May 2017, the wholesale turnover increased by 14.0% compared to May 2016

- As against the previous month, in May 2017 **the wholesale turnover (excluding the trade with motor vehicles and motorcycles)**, in nominal terms, increased as gross series by **8.4%** and as adjusted series according to the number of working days and to seasonality by **3.8%**.
- As against the corresponding month of the previous year, **the wholesale turnover (excluding the trade with motor vehicles and motorcycles)**, in nominal terms, increased both as gross series by **14.0%** and as adjusted series according to the number of working days and to seasonality by **11.4%**.
- As against the period 1.I-31.V.2016, in the period 1.I-31.V.2017 **the wholesale turnover (excluding the trade with motor vehicles and motorcycles)**, in nominal terms, increased both as gross series and as adjusted series according to the number of working days and to seasonality by **6.8%** and by **7.2%**, respectively.

Monthly evolution of the wholesale turnover in accordance to CANE Rev. 2
(adjusted series according to the number of working days and to seasonality)
- January 2010 - May 2017 -

-2010=100 -

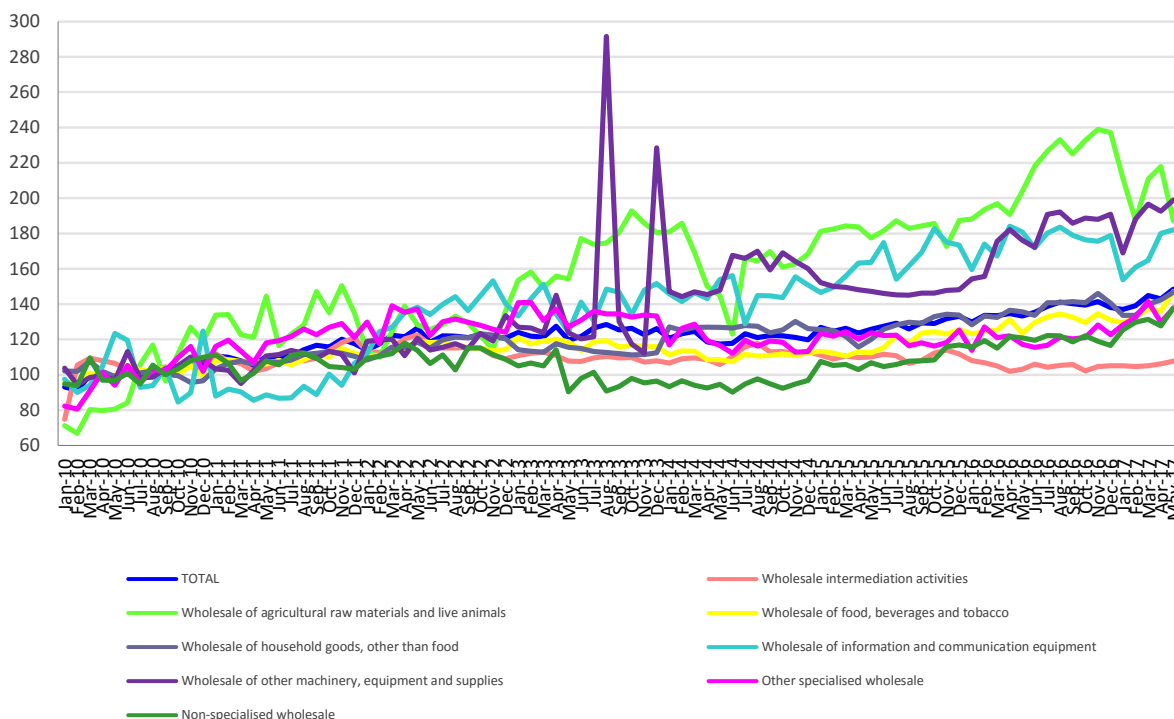


Chart data in xls (V.2016-V.2017)

Indices of the wholesale turnover

		MAY 2017 in % as against :		1.I-31.V.2017/ 1.I-31.V.2016
		APRIL 2017	MAY 2016	-%-
TOTAL	B	108.4	114.0	106.8
	S	103.8	111.4	107.2
Wholesale intermediation activities	B	109.9	112.3	101.0
	S	101.5	104.5	100.8
Wholesale of agricultural raw materials and live animals	B	67.9	84.9	98.0
	S	85.9	91.8	104.3
Wholesale of food, beverages and tobacco	B	112.3	121.6	108.8
	S	108.1	119.1	108.7
Wholesale of household goods, other than food	B	109.9	110.2	103.9
	S	103.1	108.1	104.6
Wholesale of information and communication equipment	B	107.1	106.5	99.8
	S	101.1	100.7	97.2
Wholesale of other machinery, equipment and supplies	B	113.1	113.0	105.1
	S	103.3	113.0	112.0
Other specialised wholesale	B	114.1	118.3	113.5
	S	106.0	117.3	111.3
Non-specialised wholesale	B	116.4	118.2	110.7
	S	107.9	114.0	110.0

Note: B= gross series; S= adjusted series according to the number of working days and to seasonality

[Table data in xls format](#)

May 2017 as against April 2017

As against the previous month, in May 2017 the **wholesale turnover (excluding the trade with motor vehicles and motorcycles)**, gross series, in nominal terms, globally increased by 8.4% due to the increases registered by the non-specialised wholesale (+16.4%), by the other specialised wholesale (+14.1%), by the wholesale of other machinery, equipment and supplies (+13.1%), by the wholesale of food, beverages and tobacco (+12.3%), by the wholesale intermediation activities (+9.9%), by the wholesale of household goods, other than food (+9.9%) and by the wholesale of information and communication equipment (+7.1%). The wholesale of agricultural raw materials and live animals decreased by 32.1%.

As against the previous month, in May 2017 the **wholesale turnover (excluding the trade with motor vehicles and motorcycles)**, adjusted series according to the number of working days and to seasonality, in nominal terms, globally increased by 3.8% due to the increases registered by the wholesale of food, beverages and tobacco (+8.1%), by the non-specialised wholesale (+7.9%), by the other specialised wholesale (+6.0%), by the wholesale of other machinery, equipment and supplies (+3.3%), by the wholesale of household goods, other than food (+3.1%), by the wholesale intermediation activities (+1.5%) and by the wholesale of information and communication equipment (+1.1%). The wholesale of agricultural raw materials and live animals decreased by 14.1%.

May 2017 as against May 2016

As against May 2016, in May 2017 the **wholesale turnover (excluding the trade with motor vehicles and motorcycles)**, gross series, in nominal terms, registered an increase of 14.0% due to the increases registered by the wholesale of food, beverages and tobacco (+21.6%), by the other specialised wholesale (+18.3%), by the non-specialised wholesale (+18.2%), by the wholesale of other machinery, equipment and supplies (+13.0%), by the

wholesale intermediation activities (+12.3%), by the wholesale of household goods, other than food (+10.2%) and by the wholesale of information and communication equipment (+6.5%). The wholesale of agricultural raw materials and live animals decreased by 15.1%.

As against May 2016, in May 2017 **the wholesale turnover (excluding the trade with motor vehicles and motorcycles)**, adjusted series according to the number of working days and to seasonality, in nominal terms, registered an increase of 11.4% due to the increases registered by the wholesale of food, beverages and tobacco (+19.1%), by the other specialised wholesale (+17.3%), by the non-specialised wholesale (+14.0%), by the wholesale of other machinery, equipment and supplies (+13.0%), by the wholesale of household goods, other than food (+8.1%), by the wholesale intermediation activities (+4.5%) and by the wholesale of information and communication equipment (+0.7%). The wholesale of agricultural raw materials and live animals decreased by 8.2%.

Period 1.I-31.V.2017 as against period 1.I-31.V.2016

As against period 1.I-31.V.2016, in the period 1.I-31.V.2017 **the wholesale turnover (excluding the trade with motor vehicles and motorcycles)**, gross series, in nominal terms, registered an increase of 6.8% due to the increases registered by the other specialised wholesale (+13.5%), by the non-specialised wholesale (+10.7%), by the wholesale of food, beverages and tobacco (+8.8%), by the wholesale of other machinery, equipment and supplies (+5.1%), by the wholesale of household goods, other than food (+3.9%) and by the wholesale intermediation activities (+1.0%). Drops were registered by the wholesale of agricultural raw materials and live animals (-2.0%) and by the wholesale of information and communication equipment (-0.2%).

As against period 1.I-31.V.2016, in the period 1.I-31.V.2017 **the wholesale turnover (excluding the trade with motor vehicles and motorcycles)**, adjusted series according to the number of working days and to seasonality, in nominal terms, registered an increase of 7.2% due to the increases registered by the wholesale of other machinery, equipment and supplies (+12.0%), by the other specialised wholesale (+11.3%), by the non-specialised wholesale (+10.0%), by the wholesale of food, beverages and tobacco (+8.7%), by the wholesale of household goods, other than food (+4.6%), by the wholesale of agricultural raw materials and live animals (+4.3%) and by the wholesale intermediation activities (+0.8%). The wholesale of information and communication equipment decreased by 2.8%.

Additional information:

- ✓ The turnover represents the total revenue recorded by the company during the reporting period, obtained from both the main activity and the secondary activities performed by them. The turnover does not include VAT and the revenue from the sale or transfer of assets.
- ✓ The turnover volume indices of the retail are Laspeyres type indices. The first indices obtained are at the level of CANE Rev. 2 group, then, by aggregations, indices at total level are obtained. The weights used for aggregation are calculated based on the turnover according to the results of the Business Structural Survey from the reference year (2010).

For the correct interpretation of the indicators, please see the [Methodological Notes attached to the press release on the homepage](#).

For more information, see the Monthly Statistical Bulletin (date of issue July 27, 2017) and the INS TEMPO online database (the data for May 2017 will be available on July 17, 2017).

The next issue of the press release will be on Monday, August 14, 2017.

Press release archive: <http://www.insse.ro/cms/en/comunicate-de-presa-view>

The Directorate of Communication

e-mail: birou presa@insse.ro

Tel: +4021 3181869