

Domain: Trade - services

The wholesale turnover in April 2018

- As against the previous month, in April 2018 **the wholesale turnover (excluding the trade with motor vehicles and motorcycles)**, in nominal terms, decreased as gross series by **5.9%** and increased as adjusted series according to the number of working days and to seasonality by **4.1%**.
- As against the corresponding month of the previous year, **the wholesale turnover (excluding the trade with motor vehicles and motorcycles)**, in nominal terms, increased both as gross series by **12.0%** and as adjusted series according to the number of working days and to seasonality by **11.5%**.
- As against the period 1.I-30.IV.2017, in the period 1.I-30.IV.2018 **the wholesale turnover (excluding the trade with motor vehicles and motorcycles)**, in nominal terms, increased both as gross series by **8.2%** and as adjusted series according to the number of working days and to seasonality and by **8.4%**.

Monthly evolution of the wholesale turnover in accordance to CANE Rev. 2
(adjusted series according to the number of working days and to seasonality)
- January 2010 - April 2018 -

-2015=100 -

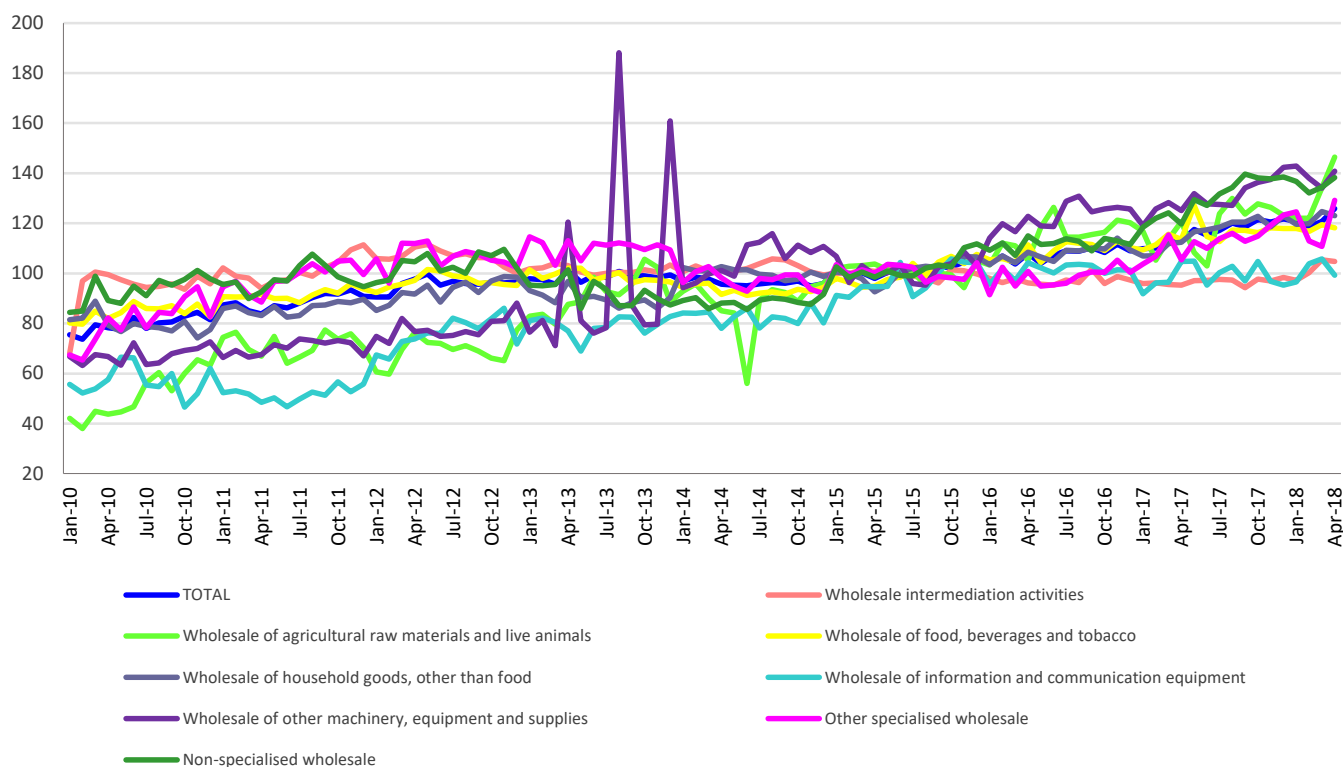


Chart data in xls (IV.2017-IV.2018)

Indices of the wholesale turnover

		APRIL 2018 in % as against :		1.I-30.IV.2018/ 1.I-30.IV.2017 -%-
		MARCH 2018	APRIL 2017	
TOTAL	B	94.1	112.0	108.2
	S	104.1	111.5	108.4
Wholesale intermediation activities	B	89.2	117.4	111.0
	S	99.4	109.9	106.4
Wholesale of agricultural raw materials and live animals	B	91.4	129.8	113.6
	S	109.1	121.4	115.0
Wholesale of food, beverages and tobacco	B	96.8	102.8	104.9
	S	98.9	104.1	105.0
Wholesale of household goods, other than food	B	88.0	107.3	110.9
	S	98.8	109.6	111.1
Wholesale of information and communication equipment	B	83.4	96.2	103.1
	S	93.7	94.6	104.2
Wholesale of other machinery, equipment and supplies	B	95.9	110.9	108.9
	S	105.1	112.5	111.6
Other specialised wholesale	B	103.6	124.2	107.6
	S	116.6	122.6	110.7
Non-specialised wholesale	B	87.2	109.0	108.8
	S	102.8	115.4	111.8

Note: B= gross series; S= adjusted series according to the number of working days and to seasonality

[Table data in xls format](#)

April 2018 as against March 2018

As against the previous month, in April 2018 the **wholesale turnover (excluding the trade with motor vehicles and motorcycles)**, gross series, in nominal terms, globally decreased by 5.9% due to the drops registered by the wholesale of information and communication equipment (-16.6%), by the non-specialised wholesale (-12.8%), by the wholesale of household goods, other than food (-12.0%), by the wholesale intermediation activities (-10.8%), by the wholesale of agricultural raw materials and live animals (-8.6%), by the wholesale of other machinery, equipment and supplies (-4.1%) and by the wholesale of food, beverages and tobacco (-3.2%). The other specialised wholesale increased by 3.6%.

As against the previous month, in April 2018 the **wholesale turnover (excluding the trade with motor vehicles and motorcycles)**, adjusted series according to the number of working days and to seasonality, in nominal terms, globally increased by 4.1% due to the rises registered by the other specialised wholesale (+16.6%), by the wholesale of agricultural raw materials and live animals (+9.1%), by the wholesale of other machinery, equipment and supplies (+5.1%) and by the non-specialised wholesale (+2.8%). Drops were registered by the wholesale of information and communication equipment (-6.3%), by the wholesale of household goods, other than food (-1.2%), by the wholesale of food, beverages and tobacco (-1.1%) and by the wholesale intermediation activities (-0.6%).

April 2018 as against April 2017

As against April 2017, in April 2018 the **wholesale turnover (excluding the trade with motor vehicles and motorcycles)**, gross series, in nominal terms, registered an increase of 12.0% due to the rises registered by the wholesale of agricultural raw materials and live animals (+29.8%), by the other specialised wholesale (+24.2%), by the wholesale intermediation activities (+17.4%), by the wholesale of other machinery, equipment and supplies (+10.9%), by the non-specialised wholesale (+9.0%), by the wholesale of household goods, other than food (+7.3%)

and by the wholesale of food, beverages and tobacco (+2.8%). The wholesale of information and communication equipment decreased by 3.8%.

As against April 2017, in April 2018 **the wholesale turnover (excluding the trade with motor vehicles and motorcycles)**, adjusted series according to the number of working days and to seasonality, in nominal terms, registered an increase of 11.5% due to the rises registered by the other specialised wholesale (+22.6%), by the wholesale of agricultural raw materials and live animals (+21.4%), by the non-specialised wholesale (+15.4%), by the wholesale of other machinery, equipment and supplies (+12.5%), by the wholesale intermediation activities (+9.9%), by the wholesale of household goods, other than food (+9.6%) and by the wholesale of food, beverages and tobacco (+4.1%). The wholesale of information and communication equipment decreased by 5.4%.

Period 1.I-30.IV.2018 as against period 1.I-30.IV.2017

As against period 1.I-30.IV.2017, in the period 1.I-30.IV.2018 **the wholesale turnover (excluding the trade with motor vehicles and motorcycles)**, gross series, in nominal terms, registered an increase of 8.2% due to the rises registered by the wholesale of agricultural raw materials and live animals (+13.6%), by the wholesale intermediation activities (+11.0%), by the wholesale of household goods, other than food (+10.9%), by the wholesale of other machinery, equipment and supplies (+8.9%), by the non-specialised wholesale (+8.8%), by the other specialised wholesale (+7.6%), by the wholesale of food, beverages and tobacco (+4.9%) and by the wholesale of information and communication equipment (+3.1%).

As against period 1.I-30.IV.2017, in the period 1.I-30.IV.2018 **the wholesale turnover (excluding the trade with motor vehicles and motorcycles)**, adjusted series according to the number of working days and to seasonality, in nominal terms, registered an increase of 8.4% due to the rises registered by the wholesale of agricultural raw materials and live animals (+15.0%), by the non-specialised wholesale (+11.8%), by the wholesale of other machinery, equipment and supplies (+11.6%), by the wholesale of household goods, other than food (+11.1%), by the other specialised wholesale (+10.7%), by the wholesale intermediation activities (+6.4%), by the wholesale of food, beverages and tobacco (+5.0%) and by the wholesale of information and communication equipment (+4.2%).

Additional information:

- ✓ **IMPORTANT!** In order to highlight the changes in the economy structure, starting with the data release for **January 2018** reference month, the base year used for the calculation of the indices, for all short-term indicators, was changed from 2010 to 2015.
- ✓ The changing of the base year involves the updating of the weighting system, to reflect the structural modifications occurred in the national economy activities. These modifications determined the proper recalculation and revision of the data series previously published.
- ✓ These changes will appear in press releases, statistical publications published by the INS and in the TEMPO online database.
- ✓ The turnover represents the total revenue recorded by the company during the reporting period, obtained from both the main activity and the secondary activities performed by them. The turnover does not include VAT and the revenue from the sale or transfer of assets.
- ✓ The turnover volume indices of the retail are Laspeyres type indices. The first indices obtained are at the level of CANE Rev. 2 group, then, by aggregations, indices at total level are obtained. The weights used for aggregation are calculated based on the turnover according to the results of the Business Structural Survey from the reference year (2015).

For the correct interpretation of the indicators, please see the [Methodological Notes attached to the press release on the homepage](#).

For more information, see the Monthly Statistical Bulletin (date of issue June 25, 2018) and the INS TEMPO online database (the data for April 2018 will be available on June 18, 2018).

The next issue of the press release will be on Monday, July 16, 2018.

Press release archive: <http://www.insse.ro/cms/en/comunicate-de-presa-view>

The Directorate of Communication

e-mail: biroupresa@insse.ro

Tel: +4021 3181869