

Domain: Trade - services

In February 2016, the wholesale turnover increased by 8.7% compared to February 2015

- As against the previous month, in February 2016 **the wholesale turnover (excluding the trade with motor vehicles and motorcycles)**, in nominal terms, increased both as gross series by **15.9%** and as adjusted series according to the number of working days and to seasonality by **2.4%**.
- As against the corresponding month of the previous year, **the wholesale turnover (excluding the trade with motor vehicles and motorcycles)**, in nominal terms, increased both as gross series by **8.7%** and as adjusted series according to the number of working days and to seasonality by **6.9%**.
- As against the period 1.I-28.II.2015, in the period 1.I-29.II.2016 **the wholesale turnover (excluding the trade with motor vehicles and motorcycles)**, in nominal terms, increased both as gross series and as adjusted series according to the number of working days and to seasonality by **5.8%** and by **4.7%**, respectively.

Monthly evolution of the wholesale turnover in accordance to CANE Rev. 2
(adjusted series according to the number of working days and to seasonality)
- January 2010 - February 2016 -

-2010=100 -

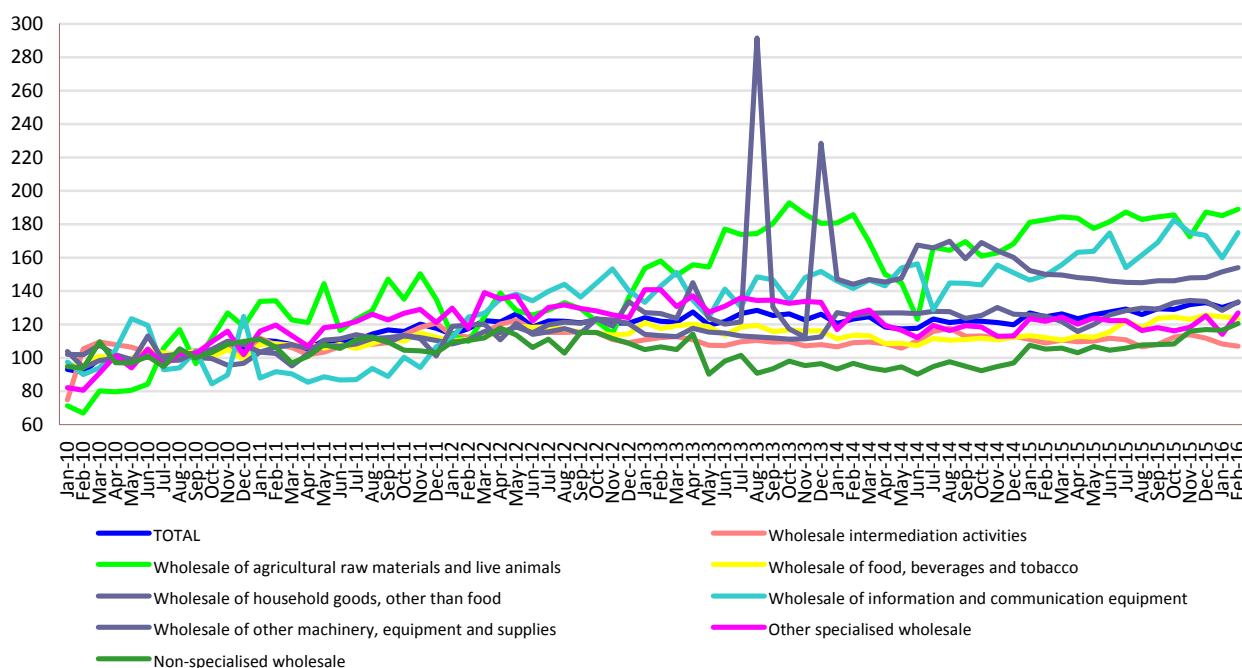


Chart data in xls (II.2015-II.2016)

Indices of the wholesale turnover

		FEBRUARY 2016 in % as against :		1.I-29.II.2016/ 1.I-28.II.2015
		JANUARY 2016	FEBRUARY 2015	-%-
TOTAL	B	115.9	108.7	105.8
	S	102.4	106.9	104.7
Wholesale intermediation activities	B	102.9	102.2	100.2
	S	98.9	98.4	97.9
Wholesale of agricultural raw materials and live animals	B	122.5	95.5	97.0
	S	102.1	103.4	102.8
Wholesale of food, beverages and tobacco	B	103.4	112.4	112.9
	S	99.2	110.2	110.0
Wholesale of household goods, other than food	B	113.0	108.3	105.1
	S	103.9	106.8	104.5
Wholesale of information and communication equipment	B	109.9	114.4	110.8
	S	109.4	117.0	113.1
Wholesale of other machinery, equipment and supplies	B	126.2	147.6	125.2
	S	101.7	102.7	101.1
Other specialised wholesale	B	140.2	103.7	97.9
	S	111.3	104.1	98.1
Non-specialised wholesale	B	118.5	117.4	113.0
	S	103.5	114.5	111.3

Note: B= gross series; S= adjusted series according to the number of working days and to seasonality

[Table data in xls format](#)

February 2016 as against January 2016

As against the previous month, in February 2016 the **wholesale turnover (excluding the trade with motor vehicles and motorcycles)**, gross series, in nominal terms, globally increased by 15.9% due to the increments registered by the other specialised wholesale (+40.2%), by the wholesale of other machinery, equipment and supplies (+26.2%), by the wholesale of agricultural raw materials and live animals (+22.5%), by the non-specialised wholesale (+18.5%), by the wholesale of household goods, other than food (+13.0%), by the wholesale of information and communication equipment (+9.9%), by the wholesale of food, beverages and tobacco (+3.4%) and by the wholesale intermediation activities (+2.9%).

As against the previous month, in February 2016 the **wholesale turnover (excluding the trade with motor vehicles and motorcycles)**, adjusted series according to the number of working days and to seasonality, in nominal terms, globally increased by 2.4% due to the increments registered by the other specialised wholesale (+11.3%), by the wholesale of information and communication equipment (+9.4%), by the wholesale of household goods, other than food (+3.9%), by the non-specialised wholesale (+3.5%), by the wholesale of agricultural raw materials and live animals (+2.1%) and by the wholesale of other machinery, equipment and supplies (+1.7%). Drops were registered by the wholesale intermediation activities (-1.1%) and by the wholesale of food, beverages and tobacco (-0.8%).

February 2016 as against February 2015

As against February 2015, in February 2016 **the wholesale turnover (excluding the trade with motor vehicles and motorcycles)**, gross series, in nominal terms, registered an increase of 8.7% due to the increments registered by the wholesale of other machinery, equipment and supplies (+47.6%), by the non-specialised wholesale (+17.4%), by the wholesale of information and communication equipment (+14.4%), by the wholesale of food, beverages and tobacco (+12.4%), by the wholesale of household goods, other than food (+8.3%), by the other specialised wholesale (+3.7%) and by the wholesale intermediation activities (+2.2%). The wholesale of agricultural raw materials and live animals decreased by 4.5%.

As against February 2015, in February 2016 **the wholesale turnover (excluding the trade with motor vehicles and motorcycles)**, adjusted series according to the number of working days and to seasonality, in nominal terms, registered an increase of 6.9% due to the increments registered by the wholesale of information and communication equipment (+17.0%), by the non-specialised wholesale (+14.5%), by the wholesale of food, beverages and tobacco (+10.2%), by the wholesale of household goods, other than food (+6.8%), by the other specialised wholesale (+4.1%), by the wholesale of agricultural raw materials and live animals (+3.4%) and by the wholesale of other machinery, equipment and supplies (+2.7%). Drops were registered by the wholesale intermediation activities (-1.6%).

Period 1.I-29.II.2016 as against period 1.I-28.II.2015

As against the period 1.I-28.II.2015, in the period 1.I-29.II.2016 **the wholesale turnover (excluding the trade with motor vehicles and motorcycles)**, gross series, in nominal terms, registered an increase of 5.8% due to the increments registered by the wholesale of other machinery, equipment and supplies (+25.2%), by the non-specialised wholesale (+13.0%), by the wholesale of food, beverages and tobacco (+12.9%), by the wholesale of information and communication equipment (+10.8%), by the wholesale of household goods, other than food (+5.1%) and by the wholesale intermediation activities (+0.2%). Drops were registered by the wholesale of agricultural raw materials and live animals (-3.0%) and by the other specialised wholesale (-2.1%).

As against the period 1.I-28.II.2015, in the period 1.I-29.II.2016 **the wholesale turnover (excluding the trade with motor vehicles and motorcycles)**, adjusted series according to the number of working days and to seasonality, in nominal terms, registered an increase of 4.7% due to the increments registered by the wholesale of information and communication equipment (+13.1%), by the non-specialised wholesale (+11.3%), by the wholesale of food, beverages and tobacco (+10.0%), by the wholesale of household goods, other than food (+4.5%), by the wholesale of agricultural raw materials and live animals (+2.8%) and by the wholesale of other machinery, equipment and supplies (+1.1%). Drops were registered by the wholesale intermediation activities (-2.1%) and by the other specialised wholesale (-1.9%).

Additional information:

For the correct interpretation of the indicators, please see the [Methodological Notes attached to the press release on the homepage](#).

For more information, see the Monthly Statistical Bulletin (date of issue April 26, 2016) and the INS TEMPO online database (the data for February 2016 will be available on April 15, 2016).

The next issue of the press release will be on Monday, May 16, 2016.

Press release archive: <http://www.insse.ro/cms/en/comunicate-de-presa-view>

The Communication Department

e-mail: birou presa@insse.ro

Tel: +4021 3181869