

Domain: Trade – services

## In November 2017, the turnover<sup>1</sup> of market services rendered mainly to enterprises decreased by 0.5% compared to the previous month

- Compared to the previous month, in November 2017 **the turnover of market services rendered mainly to enterprises**, in nominal terms, increased as gross series by **1.6%** and decreased as adjusted series according to the number of working days and to seasonality by **0.5%**.
- Compared to the corresponding month of the previous year, **the turnover of market services rendered mainly to enterprises**, in nominal terms, increased both as gross series by **12.6%** and as adjusted series according to the number of working days and to seasonality by **10.6%**.
- Compared to the period 1.I-30.XI.2016, in the period 1.I-30.XI.2017, **the turnover of market services rendered mainly to enterprises**, in nominal terms, increased both as gross series and as adjusted series according to the number of working days and to seasonality by **13.1%** and by **12.6%**, respectively.

Monthly evolution of the turnover of market services rendered mainly to enterprises,  
 according to CANE Rev. 2  
 (adjusted series according to the number of working days and to seasonality)  
 - January 2010 - November 2017 -

- 2010=100 -

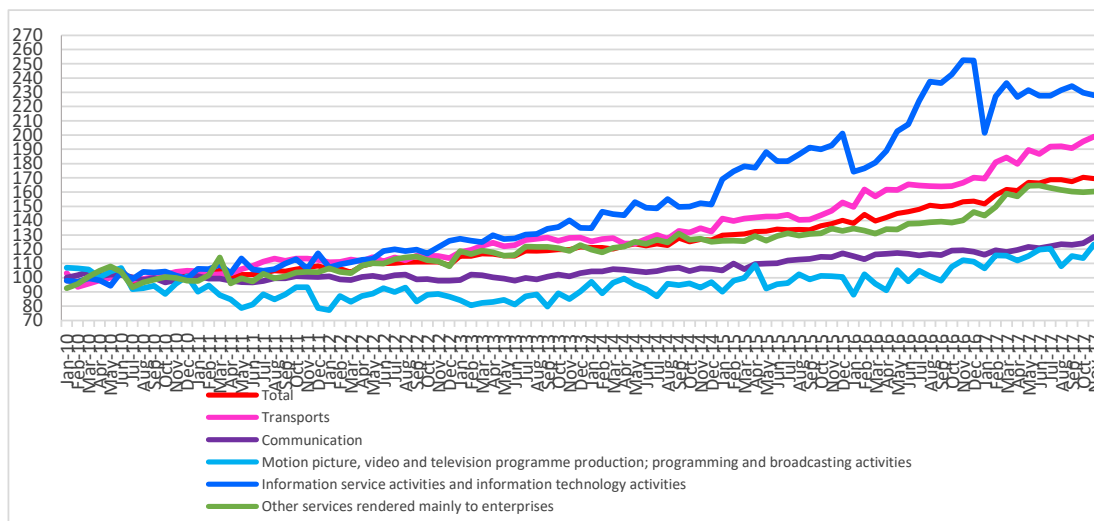


Chart data in xls format (XI.2016 - XI.2017)

<sup>1</sup> Adjusted series according to the number of working days and to seasonality

**Value indices of the turnover of market services  
rendered mainly to enterprises**

		NOVEMBER 2017 in % compared to:		1.I-30.XI.2017/ 1.I-30.XI.2016
		OCTOBER 2017	NOVEMBER 2016	-%-
<b>Total</b>	<b>B</b>	<b>101.6</b>	<b>112.6</b>	<b>113.1</b>
	<b>S</b>	<b>99.5</b>	<b>110.6</b>	<b>112.6</b>
Transports	B	97.6	118.9	115.5
	S	101.7	119.4	115.7
Communication	B	106.6	109.8	104.2
	S	103.6	107.8	104.3
Motion picture, video and television programme production; programming and broadcasting activities	B	108.4	110.3	114.9
	S	108.2	109.7	114.6
Information service activities and information technology activities	B	112.6	96.2	105.8
	S	99.3	90.4	107.7
Other services rendered mainly to enterprises	B	101.2	112.7	116.0
	S	100.3	114.4	116.3

*Note: B= gross series; S= adjusted series according to the number of working days and to seasonality*

[Table data in xls format](#)

#### **November 2017 compared to October 2017**

Compared to the previous month, in November 2017 **the turnover of market services rendered mainly to enterprises**, gross series, in nominal terms, increased by 1.6% due to increases registered in information service activities and information technology activities (+12.6%), in motion picture, video and television programme production; programming and broadcasting activities (+8.4%), in communication (+6.6%) and in other services rendered mainly to enterprises (+1.2). The transport activities decreased by 2.4%.

Compared to the previous month, in November 2017 **the turnover of market services rendered mainly to enterprises**, adjusted series according to the number of working days and to seasonality, in nominal terms, decreased by 0.5% due to drops registered in information service activities and information technology activities (-0.7%). Increases were registered in motion picture, video and television programme production; programming and broadcasting activities (+8.2%), in communication (+3.6%), in transports (+1.7%) and in other services rendered mainly to enterprises (+0.3%).

#### **November 2017 compared to November 2016**

Compared to November 2016, in November 2017 **the turnover of market services rendered mainly to enterprises**, gross series, in nominal terms, globally increased by 12.6% due to rises registered in transports (+18.9%), in other services rendered mainly to enterprises (+12.7%), in motion picture, video and television programme production; programming and broadcasting activities (+10.3%) and in communication (+9.8%). The information service activities and information technology activities decreased by 3.8%.

Compared to November 2016, in November 2017 **the turnover of market services rendered mainly to enterprises**, adjusted series according to the number of working days and seasonality, in nominal terms, globally increased by 10.6% due to rises registered in transports (+19.4%), in other services rendered mainly to enterprises (+14.4%), in motion picture, video and television programme production; programming and broadcasting activities (+9.7%) and in communication (+7.8%). The information service and information technology activities decreased by 9.6%.

## Period 1.I-30.XI.2017 compared to period 1.I-30.XI.2016

Compared to the period **1.I-30.XI.2016**, in the period **1.I-30.XI.2017 the turnover of market services rendered mainly to enterprises**, gross series, in nominal terms, globally increased by 13.1% due to rises registered in other services rendered mainly to enterprises (+16.0%), in transports (+15.5%), in motion picture, video and television programme production; programming and broadcasting activities (+14.9%), in information service activities and information technology activities (+5.8%) and in communication (+4.2%).

Compared to the period **1.I-30.XI.2016**, in the period **1.I-30.XI.2017 the turnover of market services rendered mainly to enterprises**, adjusted series according to the number of working days and to seasonality, in nominal terms, globally increased by 12.6% due to rises registered in other services rendered mainly to enterprises (+16.3%), in transports (+15.7%), in motion picture, video and television programme production; programming and broadcasting activities (+14.6%), in information service activities and information technology activities (+7.7%) and in communication (+4.3%).

### Additional information:

- ✓ The turnover represents the total revenue recorded by the company during the reporting period, obtained from both the main activity and the secondary activities performed. The turnover does not include VAT and the revenue from the sale or transfer of assets.
- ✓ The value indices of the turnover of market services rendered mainly to enterprises are Laspeyres-type indices. The first indices obtained are at CANE Rev.2 level and then, by successive aggregations, indices at total level are obtained. The weights used for aggregation are calculated based on the turnover according to the results of the Structural Business Survey of the reference year (2010).

For the correct interpretation of results, kindly see the [Methodological Note attached to the press release on the homepage](#).

For additional information, see the statistical publication Monthly Statistical Bulletin (date of issue January 26, 2018) and the online TEMPO database of the INS (data for November 2017 will be available on January 16, 2018).

The next issue of the press release will be on Wednesday, February 14, 2018.

Press releases archive: <http://www.insse.ro/cms/en/comunicate-de-presa-view>

### The Directorate of Communication

e-mail: [biroupresa@insse.ro](mailto:biroupresa@insse.ro)

Tel: +4021 3181869