

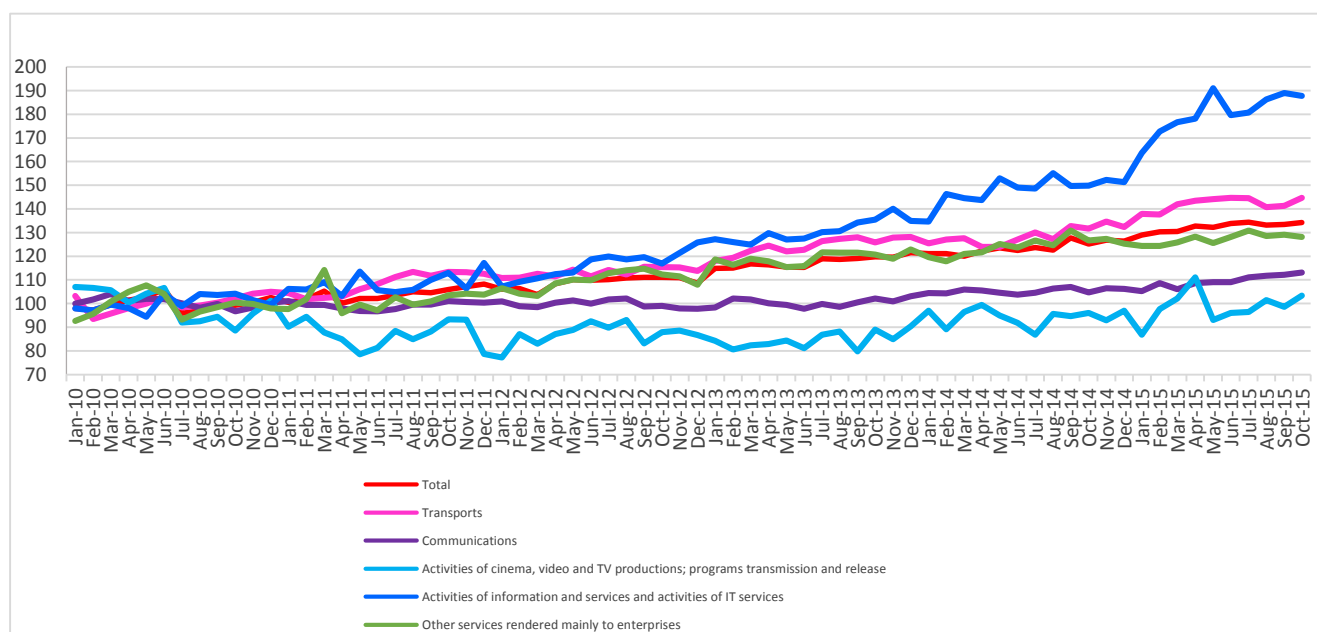
Domain: Trade - services

TURNOVER OF MARKET SERVICES RENDERED MAINLY TO ENTERPRISES INCREASED BY 7.7% IN THE PERIOD 1.I-31.X.2015

- Compared to the previous month, in October 2015, **the turnover of market services rendered mainly to enterprises**, in nominal terms, increased both as gross series by **0.2%** and as adjusted series by the number of working days and seasonality by **0,6%**.
- Compared to the corresponding month of the previous year, **the turnover of market services rendered mainly to enterprises**, in nominal terms, increased both as gross series by **6.8%** and adjusted series by the number of working days and seasonality by **7.3%**.
- Compared to the period 1.I-31.X.2014, in the period 1.I-31.X.2015, **the turnover of market services rendered mainly to enterprises** increased, in nominal terms, both as gross series and as adjusted series by the number of working days and seasonality by **7.7%**, each.

Monthly evolution of the turnover of market services rendered mainly to enterprises,
according to CANE Rev. 2
(adjusted series according to the number of working days and to seasonality)
- January 2010 - October 2015 -

- 2010=100 -



Graphic data in [xls format \(X.2014-X.2015\)](#)

**Value indices of the turnover of market services
rendered mainly to enterprises**

		OCTOBER 2015 in % compared to:		1.I-31.X.2015/ 1.I-31.X.2014 -%-
		SEPTEMBER 2015	OCTOBER 2014	
Total	B	100.2	106.8	107.7
	S	100.6	107.3	107.7
Transports	B	102.3	107.7	110.9
	S	102.4	109.8	111.3
Communications	B	100.2	108.3	104.7
	S	100.8	108.0	104.1
Cinema, video and television programs production; programs transmission and release	B	117.4	107.7	104.6
	S	104.8	107.5	104.7
Information services activities and IT services	B	94.3	126.7	124.6
	S	99.3	125.2	122.4
Other services rendered mainly to enterprises	B	99.0	101.6	102.9
	S	99.3	101.2	102.9

B= gross series; S= adjusted series by the number of working days and seasonality

[Table data in xls format](#)

October 2015 compared to September 2015

Compared to the previous month, in October 2015, **the turnover of market services rendered mainly to enterprises**, gross series, in nominal terms, increased by 0.2% due to rises in the activities of cinema, video and television programs production; programs transmission and release (+17.4%), in transports (+2.3%) and in communications (+0.2%). There were drops in the information services activities and the activities of IT services (-5.7%) and in other services rendered mainly to enterprises (-1.0%).

Compared to the previous month, in October 2015, **the turnover of market services rendered mainly to enterprises**, adjusted series by the number of working days and seasonality, in nominal terms, globally increased by 0.6% due to rises in the activities of cinema, video and television programs production; programs transmission and release (+4.8%), in transports (+2.4%) and in communications (+0.8%). There were drops in other services rendered mainly to enterprises and in the information services activities and the activities of IT services of 0.7%, each.

October 2015 compared to October 2014

Compared to October 2014, in October 2015, **the turnover of market services rendered mainly to enterprises**, gross series, in nominal terms, globally increased by 6.8% due to rises in the information services activities and the activities of IT services (+26.7%), in communications (+8.3%), in transports (+7.7%), in the activities of cinema, video and television programs production; programs transmission and release (+7.7%) and in other services rendered mainly to enterprises (+1.6%).

Compared to October 2014, in October 2015, **the turnover of market services rendered mainly to enterprises**, adjusted series by the number of working days and seasonality, in nominal terms, globally increased by 7.3%, due to rises in the information services activities and the activities of IT services (+25.2%), in transports (+9.8%), in communications (+8.0%), in the activities of cinema, video and television programs production; programs transmission and release (+7.5%) and in other services rendered mainly to enterprises (+1.2%).

Period 1.I-31.X.2015 compared to period 1.I-31.X.2014

Compared to the period 1.I-31.X.2014, in the period 1.I-31.X.2015, **the turnover of market services rendered mainly to enterprises**, gross series, in nominal terms, globally increased by 7.7% due to rises in the information services activities and the activities of IT services (+24.6%), in transports (+10.9%), in communications (+4.7%), in the activities of cinema, video and television programs production; programs transmission and release (+4.6%) and in other services rendered mainly to enterprises (+2.9%).

Compared to the period 1.I-31.X.2014, in the period 1.I-31.X.2015, **the turnover of market services rendered mainly to enterprises**, adjusted series by the number of working days and seasonality, globally increased, in nominal terms, by 7.7% due to rises in the information services activities and the activities of IT services (+22.4%), in transports (+11.3%), in the activities of cinema, video and television programs production; programs transmission and release (+4.7%), in communications (+4.1%) and in other services rendered mainly to enterprises (+2.9%).

Additional information:

For the correct interpretation of results, kindly see the [Methodological Note attached to the press release on the homepage](#).

For additional information, kindly see the statistical publication Monthly Statistical Bulletin (date of issue December 22, 2015) and the on line data base TEMPO of the NIS (data for October 2015 will be available on December 14th).

The next issue of the press release will be on Friday, January 15, 2016.

The archive of the press releases: <http://www.insse.ro/cms/en/content/press-releases>

The Department of Communication

e-mail: birouipresa@insse.ro

Tel: +4021 3181869