

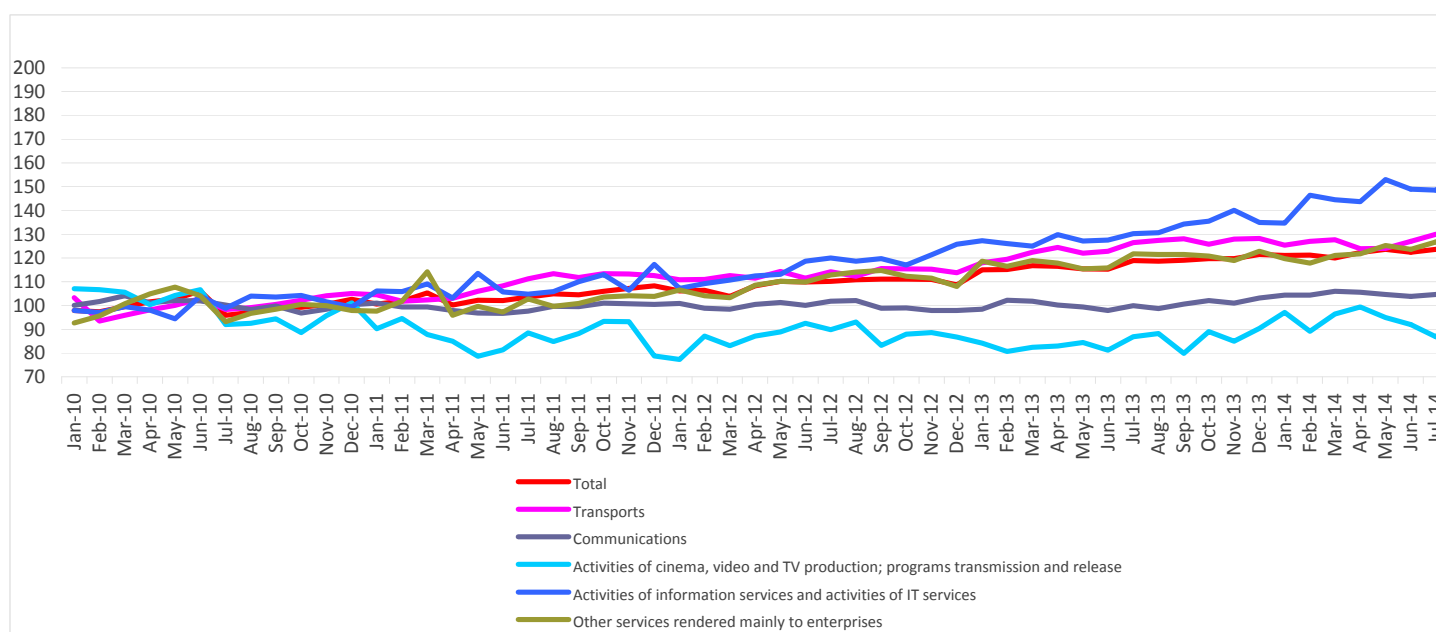
Domain: Trade - services

TURNOVER OF MARKET SERVICES RENDERED MAINLY TO ENTERPRISES INCREASED BY 9.1%

- Compared to the previous month, in June 2015, **the turnover of market services rendered mainly to enterprises** increased, in nominal terms, both as gross series by **4.4%** and as adjusted series by the number of working days and seasonality by **1.0%**.
- Compared to the corresponding month of the previous year, **the turnover of market services rendered mainly to enterprises**, in nominal terms, increased both as gross series and adjusted series by the number of working days and seasonality by **9.1%** and by **9.0%**, respectively.
- Compared to Semester I 2014, in Semester I 2015, **the turnover of market services rendered mainly to enterprises** increased, in nominal terms, both as gross series and as adjusted series by the number of working days and seasonality by **7.9%**, each.

Monthly evolution of the turnover of market services rendered mainly to enterprises,
according to CANE Rev. 2
(adjusted series according to the number of working days and to seasonality)
- January 2010 - June 2015 -

- 2010=100 -



Graphic data in xls (VI.2014-VI.2015)

**Value indices of the turnover of market services
rendered mainly to enterprises**

		JUNE 2015 in % compared to:		Semester I 2015/ Semester I 2014 -%-
		MAY 2015	JUNE 2014	
Total	B	104.4	109.1	107.9
	S	101.0	109.0	107.9
Transports	B	105.2	113.8	112.6
	S	100.2	113.6	112.5
Communications	B	102.5	106.2	102.9
	S	99.5	104.5	102.8
Cinema, video and television programs production; programs transmission and release	B	100.7	103.0	102.8
	S	103.9	105.2	103.3
Information services activities and IT services	B	91.0	119.9	123.7
	S	94.1	120.6	121.9
Other services rendered mainly to enterprises	B	108.4	104.2	102.9
	S	101.4	103.0	103.7

B= gross series; S= adjusted series by the number of working days and seasonality

[Graphic data in xls format](#)

June 2015 compared to May 2015

Compared to the previous month, in June 2015, **the turnover of market services rendered mainly to enterprises**, gross series, in nominal terms, globally increased by 4.4% due to rises in other services rendered mainly to enterprises (+8.4%), in transports (+5.2%), in communications (+2.5%) and in the activities of cinema, video and television programs production, programs transmission and release (+0.7%). The information services activities and the activities of IT services decreased by 9.0%.

Compared to the previous month, in June 2015, **the turnover of market services rendered mainly to enterprises**, adjusted series by the number of working days and seasonality, in nominal terms, globally increased by 1.0% due to rises in the activities of cinema, video and television programs production, programs transmission and release (+3.9%), in other services rendered mainly to enterprises (+1.4%) and in transports (+0.2%). There were drops in the information services activities and the activities of IT services increased (-5.9%) and in communications (-0.5%).

June 2015 compared to June 2014

Compared to June 2014, in June 2015, **the turnover of market services rendered mainly to enterprises**, gross series, in nominal terms, globally increased by 9.1% due to rises in the information services activities and the activities of IT services (+19.9%), in transports (+13.8%), in communications (+6.2%), in other services rendered mainly to enterprises (+4.2%) and in the activities of cinema, video and television programs production, programs transmission and release (+3.0%).

Compared to June 2014, in June 2015, **the turnover of market services rendered mainly to enterprises**, adjusted series by the number of working days and seasonality, in nominal terms, globally increased by 9.0% due to rises in the information services activities and the activities of IT services (+20.6%), in transports (+13.6%), in the activities of cinema, video and television programs production, programs transmission and release (+5.2%), in communications (+4.5%) and in other services rendered mainly to enterprises (+3.0%).

Semester I 2015 compared to Semester I 2014

Compared to Semester I 2014, in Semester I 2015, **the turnover of market services rendered mainly to enterprises**, gross series, in nominal terms, globally increased by 7.9% due to rises in the information services activities and the activities of IT services (+23.7%), in transports (+12.6%), in other services rendered mainly to enterprises (+2.9%), in communications (+2.9%) and in the activities of cinema, video and television programs production, programs transmission and release (+2.8%).

Compared to Semester I 2014, in Semester I 2015, **the turnover of market services rendered mainly to enterprises**, adjusted series by the number of working days and seasonality, globally increased, in nominal terms, by 7.9% due to rises in the information services activities and the activities of IT services (+21.9%), in transports (+12.5%), in other services rendered mainly to enterprises (+3.7%), in the activities of cinema, video and television programs production, programs transmission and release (+3.3%) and in communications (+2.8%).

Additional information:

For the correct interpretation of results, kindly see the [Methodological Note](#).

For additional information, kindly see the statistical publication Monthly Statistical Bulletin (date of issue August 19, 2015) and the on line data base TEMPO of the NIS (data for June 2015 will be available on August 14th).

The next issue of the press release will be on Monday, September 14, 2015.

The archive of the press releases: <http://www.insse.ro/cms/en/content/press-releases>

The Department of Communication

e-mail: biroupresa@insse.ro

Tel: +4021 3181869