



ROMANIA

NATIONAL INSTITUTE OF STATISTICS
www.insse.ro

PRESS RELEASE

No. 182/ July 14, 2017



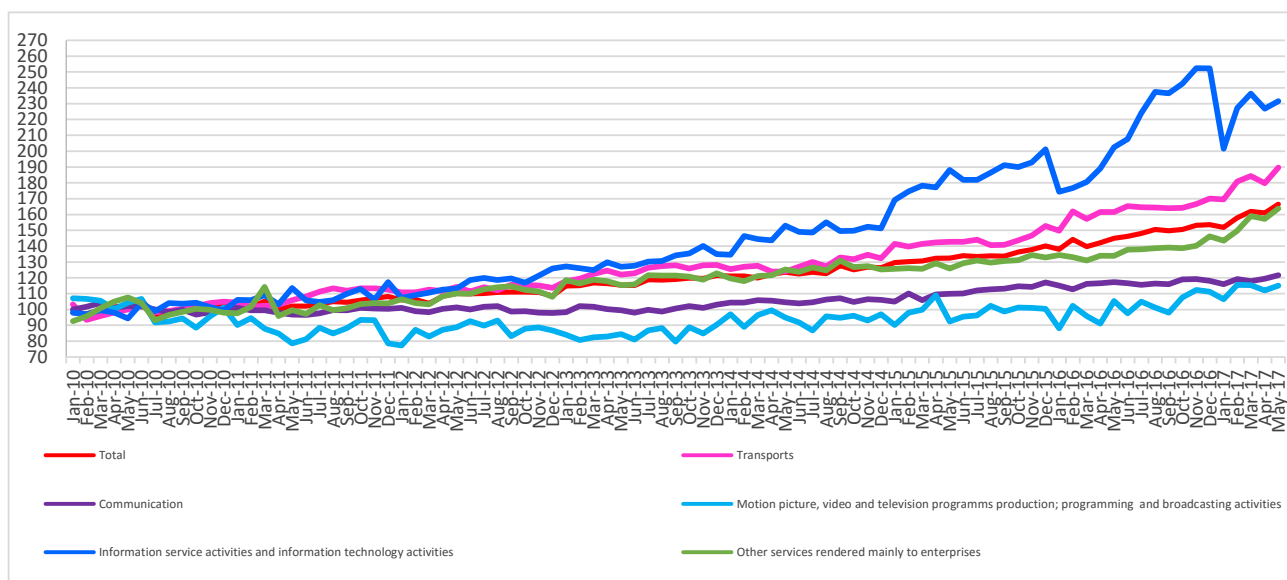
Domain: Trade – services

In May 2017, the turnover of market services rendered mainly to enterprises increased by 17.7% compared to May 2016

- Compared to the previous month, in May 2017, **the turnover of market services rendered mainly to enterprises**, in nominal terms, increased both as gross series by **9.9%** and as series adjusted by the number of working days and seasonality by **3.4%**.
- Compared to the corresponding month of the previous year, **the turnover of market services rendered mainly to enterprises**, in nominal terms, increased both as gross series by **17.7** and as series adjusted by the number of working days and seasonality by **14.7%**.
- Compared to the period 1.I-31.V.2016, in the period 1.I-31.V.2017, **the turnover of market services rendered mainly to enterprises**, in nominal terms, increased both as gross series and as series adjusted by the number of working days and seasonality by **13.4%** and by **12.6%**, respectively.

Monthly evolution of the turnover of market services rendered mainly to enterprises,
according to CANE Rev. 2
(series adjusted according to the number of working days and seasonality)
- January 2010 - May 2017 -

- 2010=100 -



Graph data in xls format (V.2016- V.2017)

**Value indices of the turnover of market services
rendered mainly to enterprises**

		MAY 2017 in % compared to:		1.I-31.V.2017/ 1.I-31.V.2016
		APRIL 2017	MAY 2016	-%-
Total	B	109,9	117,7	113,4
	S	103,4	114,7	112,6
Transports	B	110,3	119,2	114,4
	S	105,5	117,4	114,2
Communication	B	103,3	105,0	102,1
	S	101,9	103,8	102,8
Motion picture, video and television programme production; programming and broadcasting activities	B	98,9	109,3	118,0
	S	102,7	109,3	117,0
Information service activities and information technology activities	B	129,2	107,4	113,4
	S	102,1	114,3	121,7
Other services rendered mainly to enterprises	B	108,2	124,5	116,7
	S	104,3	122,5	116,1

B= serie brută; S= serie ajustată în funcție de numărul de zile lucrătoare și de sezonabilitate

[Datele tabelului în format xls](#)

May 2017 compared to April 2017

Compared to the previous month, in May 2017, **the turnover of market services rendered mainly to enterprises**, gross series, in nominal terms, increased by 9.9% due to rises in information service activities and information technology activities (+29.2%), in transports (+10.3%), in other services rendered mainly to enterprises (+8.2%) and in communication (+3.3%). The motion picture, video and television programme production; programming and broadcasting activities decreased by 1.1%.

Compared to the previous month, in May 2017, **the turnover of market services rendered mainly to enterprises**, series adjusted by the number of working days and seasonality, in nominal terms, increased by 3.4% due to rises in transports (+5.5%), in other services rendered mainly to enterprises (+4.3%), in motion picture, video and television programme production; programming and broadcasting activities (+2.7%), in information service activities and information technology activities (+2.1%) and in communication (+1.9%).

May 2017 compared to May 2016

Compared to May 2016, in May 2017, **the turnover of market services rendered mainly to enterprises**, gross series, in nominal terms, globally increased by 17.7% due to rises in other services rendered mainly to enterprises (+24.5%), in transports (+19.2%), in motion picture, video and television programme production; programming and broadcasting activities (+9.3%), in information service activities and information technology activities (+7.4%) and in communication (+5.0%).

Compared to May 2016, in May 2017, **the turnover of market services rendered mainly to enterprises**, series adjusted by the number of working days and seasonality, in nominal terms, globally increased by 14.7% due to rises in other services rendered mainly to enterprises (+22.5%), in transports (+17.4%), in information service activities and information technology activities (+14.3%), in motion picture, video and television programme production; programming and broadcasting activities (+9.3%) and in communication (+3.8%).

Period 1.I-31.V.2017 compared to period 1.I-31.V.2016

Compared to the period **1.I-31.V.2016**, in the period **1.I-31.V.2017**, the turnover of market services rendered **mainly to enterprises**, gross series, in nominal terms, globally increased by 13.4%, due to rises in motion picture, video and television programme production; programming and broadcasting activities (+18.0%), in other services rendered mainly to enterprises (+16.7%), in transports (+14.4%), in information service activities and information technology activities (+13.4%) and in communication (+2.1%).

Compared to the period **1.I-31.V.2016**, in the period **1.I-31.V.2017**, the turnover of market services rendered **mainly to enterprises**, series adjusted by the number of working days and seasonality, in nominal terms, globally increased by 12.6% due to rises in information service activities and information technology activities (+21.7%), in motion picture, video and television programme production; programming and broadcasting activities (+17.0%), in other services rendered mainly to enterprises (+16.1%), in transports (+14.2%) and in communication (+2.8%).

Additional information:

- ✓ The turnover represents the total revenue recorded by the company during the reporting period, obtained from both the main activity and the secondary activities performed. The turnover does not include VAT and the revenue from the sale or transfer of assets.
- ✓ The value indices of the turnover of market services rendered mainly to enterprises are Laspeyres-type indices. The first indices obtained are at CANE Rev.2 level and then, by successive aggregations, indices at total level are obtained. The weights used for aggregation are calculated based on the turnover according to the results of the Structural Business Survey of the reference year (2010).

For the correct interpretation of results, kindly see the [Methodological Note attached to the press release on the homepage](#).

For additional information, kindly see the statistical publication Monthly Statistical Bulletin (date of issue July 27, 2017) and the online TEMPO database of the INS (data for May 2017 will be available on July 17, 2017).

The next issue of the press release will be on Monday, August 14, 2017.

The archive of the press releases: <http://www.insse.ro/cms/en/comunicate-de-presa-view>

The Directorate of Communication

e-mail: biroupresa@insse.ro

Tel: +4021 3181869