

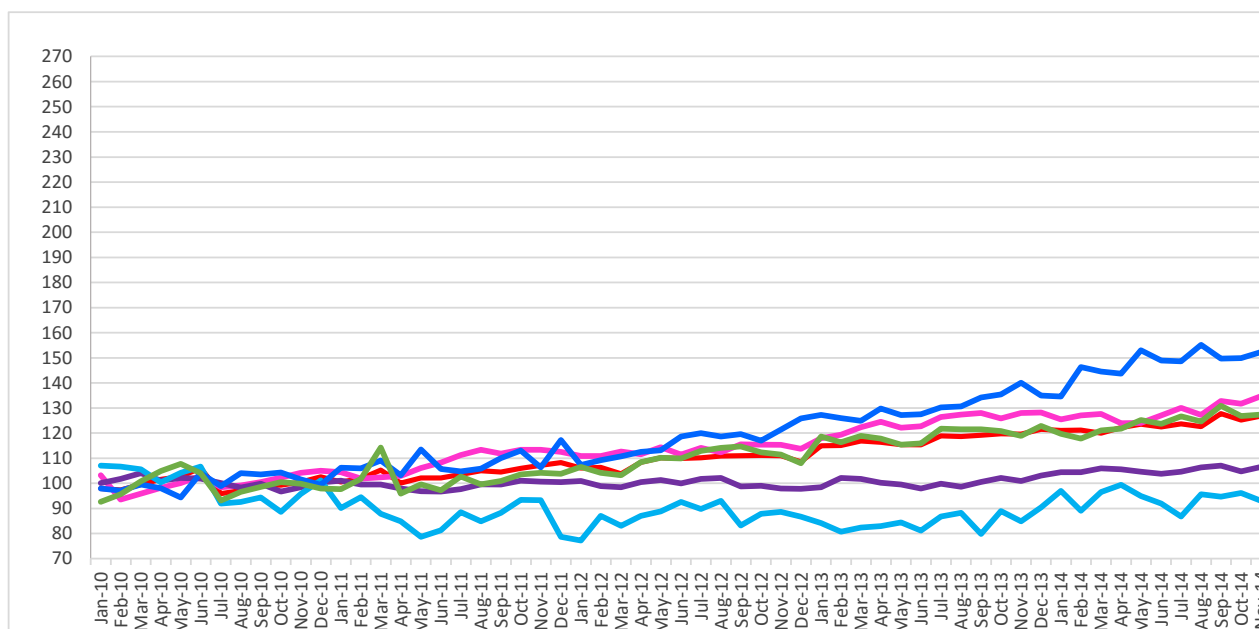
Domain: Trade – services

## In March 2017, the turnover of market services rendered mainly to enterprises increased by 18.5% compared to March 2016

- Compared to the previous month, in March 2017, **the turnover of market services rendered mainly to enterprises**, in nominal terms, increased both as gross series by **14.2%** and as series adjusted by the number of working days and seasonality by **2.5%**.
- Compared to the corresponding month of the previous year, **the turnover of market services rendered mainly to enterprises**, in nominal terms, increased both as gross series by **18.5%** and as series adjusted by the number of working days and seasonality by **15.8%**.
- Compared to the period 1.I-31.III.2016, in the period 1.I-31.III.2017 **the turnover of market services rendered mainly to enterprises**, in nominal terms, increased both as gross series and as series adjusted by the number of working days and seasonality by **12.7%** and by **11.7%**, respectively.

Monthly evolution of the turnover of market services rendered mainly to enterprises,  
 according to CANE Rev. 2  
 (series adjusted according to the number of working days and seasonality)  
 - January 2010 - March 2017 -

- 2010=100 -



Graph data in xls format (III.2016- III.2017)

**Value indices of the turnover of market services  
rendered mainly to enterprises**

		MARCH 2017 in % compared to:		1.I-31.III.2017/ 1.I-31.III.2016
		FEBRUARY 2017	MARCH 2016	-%-
<b>Total</b>	<b>B</b>	<b>114.2</b>	<b>118.5</b>	<b>112.7</b>
	<b>S</b>	<b>102.5</b>	<b>115.8</b>	<b>111.7</b>
Transports	B	113.1	119.0	114.4
	S	101.9	117.4	114.1
Communication	B	103.2	101.0	101.2
	S	98.8	101.3	102.6
Motion picture, video and television programme production; programming and broadcasting activities	B	117.0	119.4	119.1
	S	98.9	119.3	117.6
Information service activities and information technology activities	B	104.9	123.8	118.2
	S	106.2	133.6	126.0
Other services rendered mainly to enterprises	B	122.1	123.6	114.1
	S	105.9	121.1	113.4

*B = gross series; S = series adjusted by the number of working days and seasonality*

[Table data in xls format](#)

### March 2017 compared to February 2017

Compared to the previous month, in March 2017, **the turnover of market services rendered mainly to enterprises**, gross series, in nominal terms, increased by 14.2% due to rises in other services rendered mainly to enterprises (+22.1%), in motion picture, video and television programme production; programming and broadcasting activities (+17.0%), in transports (+13.1%), rises in information service activities and information technology activities (+4.9%) and in communication (+3.2%).

Compared to the previous month, in March 2017, **the turnover of market services rendered mainly to enterprises**, series adjusted by the number of working days and seasonality, in nominal terms, increased by 2.5% due to rises in information service activities and information technology activities (+6.2%), in other services rendered mainly to enterprises (+5.9%) and in transports (+1.9%). There were drops in communication (-1.2%) and in motion picture, video and television programme production; programming and broadcasting activities (-1.1%).

### March 2017 compared to March 2016

Compared to March 2016, in March 2017, **the turnover of market services rendered mainly to enterprises**, gross series, in nominal terms, globally increased by 18.5% due to rises in information service activities and information technology activities (+23.8%), in other services rendered mainly to enterprises (+23.6%), in motion picture, video and television programme production; programming and broadcasting activities (+19.4%), in transports (+19.0%) and in communication (+1.0%).

Compared to March 2016, in March 2017, **the turnover of market services rendered mainly to enterprises**, series adjusted by the number of working days and seasonality, in nominal terms, globally increased by 15.8% due to rises in information service activities and information technology activities (+33.6%), in other services rendered mainly to enterprises (+21.1%), in motion picture, video and television programme production; programming and broadcasting activities (+19.3%), in transports (+17.4%) and in communication (+1.3%).

## Period 1.I-31.III.2017 compared to period 1.I-31.III.2016

Compared to the period **1.I-31.III.2016**, in the period **1.I-31.III.2017**, the turnover of market services rendered **mainly to enterprises**, gross series, in nominal terms, globally increased by 12.7% due to rises in motion picture, video and television programme production; programming and broadcasting activities (+19.1%), in information service activities and information technology activities (+18.2%), in transports (+14.4%), in other services rendered mainly to enterprises (+14.1%) and in communication (+1.2%).

Compared to the period **1.I-31.III.2016**, in the period **1.I-31.III.2017**, the turnover of market services rendered **mainly to enterprises**, series adjusted by the number of working days and seasonality, in nominal terms, globally increased by 11.7% due to rises in information service activities and information technology activities (+26.0%), in motion picture, video and television programme production; programming and broadcasting activities (+17.6%), in transports (+14.1%), in other services rendered mainly to enterprises (+13.4%) and in communication (+2.6%).

### Additional information:

For the correct interpretation of results, kindly see the [Methodological Note attached to the press release on the homepage](#).

For additional information, kindly see the statistical publication Monthly Statistical Bulletin (date of issue May 26, 2017) and the online TEMPO database of the INS (data for March 2017 will be available on May 16, 2017).

The next issue of the press release will be on Friday, June 16, 2017.

The archive of the press releases: <http://www.insse.ro/cms/en/comunicate-de-presa-view>

### The Directorate of Communication

e-mail: [biroupresa@insse.ro](mailto:biroupresa@insse.ro)

Tel: +4021 3181869