

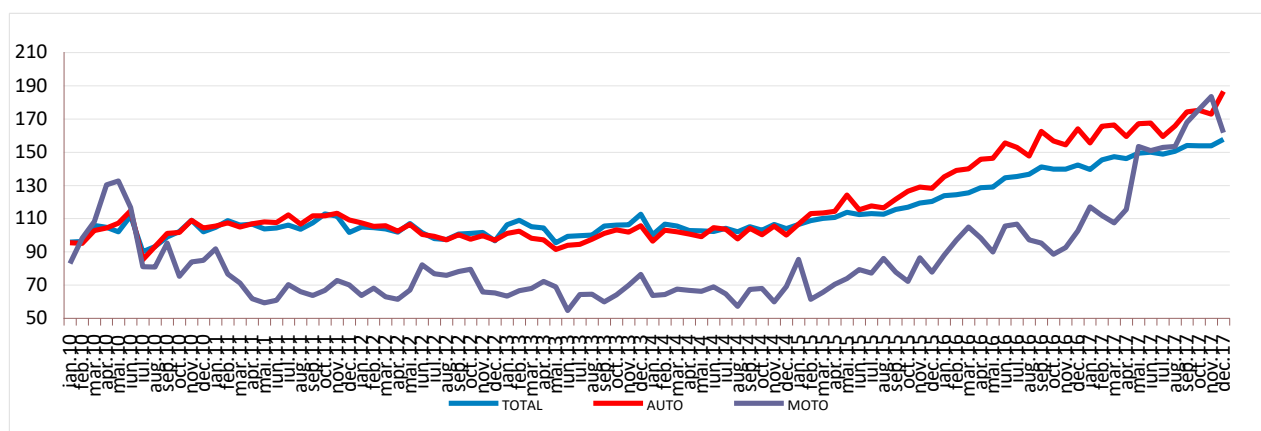
Domain: Trade – services

In 2017, compared to 2016, the turnover of the trade with motor vehicles and the turnover of the market services provided to the population increased by 11.1% and by 15.5%, respectively

- Compared to the previous month, in December 2017 **the turnover volume of the trade with motor vehicles and motorcycles** decreased as gross series by **6.0%** and increased as adjusted series according to the number of working days and to seasonality by **2.4%**. **The turnover volume of the market services provided to the population** increased compared to the previous month both as gross series by **5.5%** and as adjusted series according to the number of working days and to seasonality by **3.3%**.
- Compared to the corresponding month of the previous year, **the turnover volume of the trade with motor vehicles and motorcycles** increased both as gross series by **7.1%** and as adjusted series according to the number of working days and to seasonality by **10.7%**. Compared to the corresponding month of the previous year, **the turnover volume of the market services provided to the population** increased both as gross series by **20.1%** and as adjusted series according to the number of working days and to seasonality by **19.6%**.
- In 2017, compared to 2016, **the turnover volume of the trade with motor vehicles and motorcycles** increased as gross series by **11.1%**. **The turnover volume of the market services provided to the population** increased as gross series by **15.5%**.

Monthly evolution of the turnover in wholesale and retail, maintenance and repair of motor vehicles and motorcycles (adjusted series according to the number of working days and to seasonality) - January 2010 – December 2017 –

-2010=100-



AUTO = Trade with motor vehicles; MOTO= Trade with motorcycles, spare parts and related accessories; maintenance and repair of motorcycles

[Chart data in xls format \(XII.2016-XII.2017\)](#)

**Monthly evolution of the turnover for the market services provided to the population
(adjusted series according to the number of working days and to the seasonality)
- January 2010 – December 2017 -**

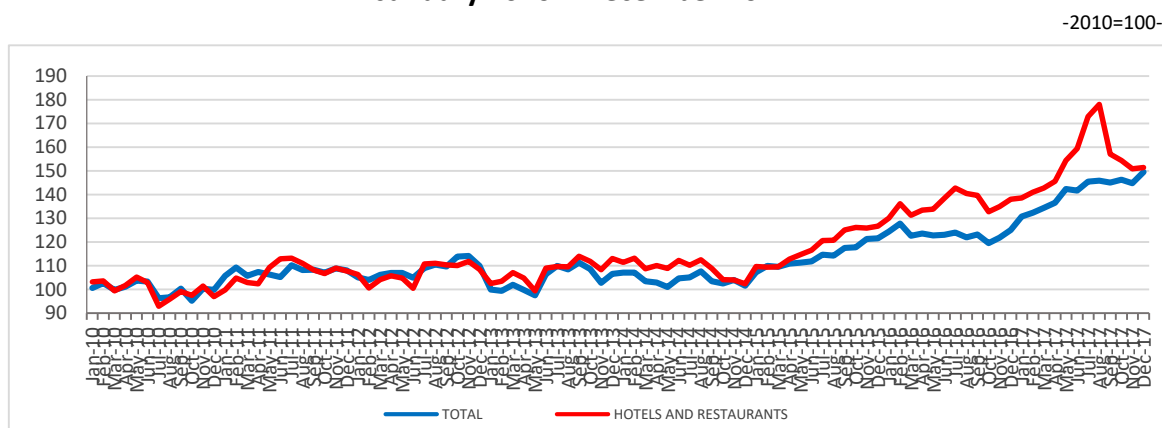


Chart data in xls format (XII.2016-XII.2017)

**Turnover volume indices for the trade with motor vehicles and motorcycles and
market services provided to the population**

		DECEMBER 2017 in % compared to:		Year 2017/ Year 2016 -%-
		NOVEMBER 2017	DECEMBER 2016	
Total wholesale and retail, maintenance and repair of motor vehicles and motorcycles	B	94.0	107.1	111.1
	S	102.4	110.7	-
Trade with motor vehicles	B	100.2	108.5	110.4
	S	108.0	113.8	-
Maintenance and repair of motor vehicles	B	93.9	109.2	122.9
	S	101.3	113.0	-
Trade with spare parts and accessories for motor vehicles	B	83.0	103.2	107.3
	S	100.6	106.8	-
Trade with motorcycles, spare parts and related accessories; maintenance and repair of motorcycles	B	83.2	142.7	150.6
	S	88.1	157.9	-
Market services provided to the population – total	B	105.5	120.1	115.5
	S	103.3	119.6	-
out of which:				
Hotels and restaurants	B	99.5	107.9	113.9
	S	100.3	109.7	-
Gambling and other recreational activities	B	113.0	140.3	123.9
	S	107.4	141.3	-
Activities of travel agencies and tour operators; other travel booking and assistance services	B	109.8	141.0	112.2
	S	106.7	132.8	-
Hairdressing and other embellishment activities	B	138.2	89.7	82.5
	S	124.1	88.0	-
Washing, cleaning (dry) of textile articles and fur products	B	110.7	112.8	108.9
	S	112.4	112.9	-

Note: B= gross series; S= adjusted series according to the number of working days and to seasonality

Table data in xls format

December 2017 compared to November 2017

Compared to the previous month, in December 2017 **the turnover volume of wholesale and retail, the maintenance and repair of motor vehicles and motorcycles, gross series**, decreased by 6.0% due to drops registered in the trade with spare parts and accessories for motor vehicles (-17.0%), in the trade with motorcycles, spare parts and related accessories; maintenance and repair of motorcycles (-16.8%) and in the maintenance and repair activities of motor vehicles (-6.1%). The trade with motor vehicles increased by 0.2%.

Compared to the previous month, **the turnover volume of wholesale and retail, the maintenance and repair of motor vehicles and motorcycles, adjusted series according to the number of working days and to the seasonality**, increased by 2.4% in December 2017.

As to the **market services provided to the population, gross series**, in December 2017, compared to the previous month, the turnover volume increased by 5.5% due to increases registered in the services of hairdressing and other embellishment activities (+38.2%), in the activities of gambling and other recreational activities (+13.0%), in the activities of washing, cleaning and dyeing of textiles and furs (+10.7%) and in the activities of travel agencies and tour operators (+9.8%). The activities of hotels and restaurants decreased by 0.5%.

Compared to the previous month, in December 2017, **the turnover volume for the market services provided to the population, adjusted series according to the number of working days and to the seasonality**, increased by 3.3%.

December 2017 compared to December 2016

Compared to December 2016, in December 2017 **the turnover volume of wholesale and retail, the maintenance and repair of motor vehicles and motorcycles, gross series**, increased by 7.1% due to rises in the trade with motorcycles, spare parts and related accessories; the maintenance and repair of motorcycles (+42.7%), in the maintenance and repair activities of motor vehicles (+9.2%), in the trade with motor vehicles (+8.5%) and in the trade with spare parts and accessories for motor vehicles (+3.2%).

In December 2017, **the turnover volume of wholesale and retail, the maintenance and repair of motor vehicles and motorcycles, adjusted series according to the number of working days and to the seasonality**, increased by 10.7% compared to December 2016.

In December 2017, **the market services provided to the population, gross series**, registered a turnover of 20.1% more compared to December 2016 due to rises in the activities of travel agencies and tour operators (+41.0%), in the activities of gambling and other recreational activities (+40.3%), in the activities of washing, cleaning and dyeing of textiles and furs (+12.8%) and in the activities of hotels and restaurants (+7.9%). Drops were registered in the hairdressing and other embellishment activities (-10.3%).

In December 2017, the **market services provided to the population, adjusted series according to the number of working days and to the seasonality**, increased by 19.6% compared to December 2016.

Year 2017 compared to 2016

In 2017, compared to 2016, **the turnover volume of wholesale and retail, the maintenance and repair of motor vehicles and motorcycles, gross series**, increased by 11.1% due to rises in the trade with motorcycles, spare parts and related accessories; the maintenance and repair of motorcycles (+50.6%), in the maintenance and repair activities of motor vehicles (+22.9%), in the trade with motor vehicles (+10.4%) and in the trade with spare parts and accessories for motor vehicles (+7.3%).

In 2017 **the market services provided to the population, gross series**, registered a turnover of 15.5% more compared to 2016, due to rises in the activities of gambling and other recreational activities (+23.9%), in the activities of hotels and restaurants (+13.9%), in the activities of travel agencies and tour operators (+12.2%) and in the activities of washing, cleaning and dyeing of textiles and furs (+8.9%). The hairdressing and other embellishment activities decreased by 17.5%.

Additional information:

- ✓ The turnover represents the total revenue recorded by the company during the reporting period, obtained both from the main activity and the secondary activities performed by it. The turnover does not include the revenue from the sale or transfer of assets.
- ✓ The volume indices of the turnover in trade with motor vehicles and motorcycles and in the market services rendered to the population are Laspeyres type indices and are calculated under comparable prices and methodological conditions. For expressing the values of the current period in prices of the reference period the deflating price indices are used (consumer price index). The first indices obtained are at the level of class/group CANE Rev. 2, then, by successive aggregations indices at aggregate levels are obtained. The weights used for aggregation are calculated based on the turnover according to the results of the Business Structural Survey from the reference year (2010).

For the correct interpretation of results, kindly see the [Methodological Note attached to the press release on the homepage](#).

For additional information see the statistical publication Monthly Statistical Bulletin (date of issue February 26, 2018) and the online TEMPO database of the INS (data for December 2017 will be available on February 15, 2018).

The next issue of the press release will be on Thursday, March 15, 2018.

The archive of the press releases: <http://www.insse.ro/cms/en/comunicate-de-presa-view>

The Directorate of Communication

e-mail: biroupresa@insse.ro

Tel: +4021 3181869