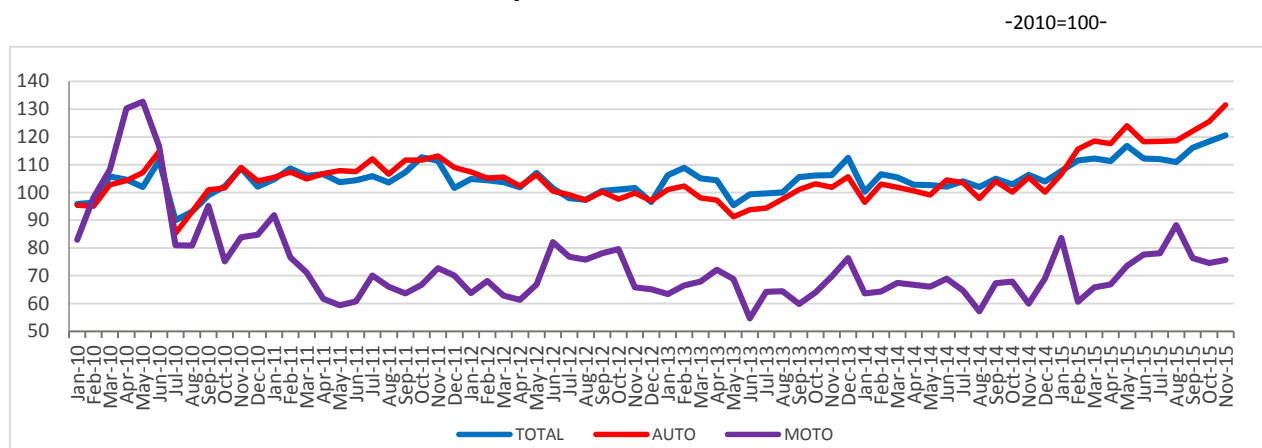


Domain: Trade - Services

THE TRADE WITH MOTOR VEHICLES INCREASED BY 9.4% IN THE PERIOD 1.I-30.XI.2015; THE MARKET SERVICES PROVIDED TO THE POPULATION INCREASED BY 8.4% IN THE PERIOD 1.I-30.XI.2015

- Compared to the previous month, in November 2015, **the turnover of the trade with motor vehicles and motorcycles** increased both as gross series by **0.3%** and as adjusted series according to the number of working days and to seasonality by **1.9%**. **The turnover for the market services provided to the population** decreased, compared to the previous month, as gross series by **5.3%** and increased as adjusted series according to the number of working days and to seasonality by **0.3%**.
- Compared to the corresponding month of the previous year, **the turnover of the trade with motor vehicles and motorcycles** increased both as gross series by **13.7%** and as adjusted series according to the number of working days and to seasonality by **13.4%**. **The turnover for the market services provided to the population** increased both as gross series by **15.0%** and as adjusted series according to the number of working days and to seasonality by **14.7%**.
- Compared to the period 1.I-30.XI.2014, in the period 1.I-30.XI.2015, **the turnover of the trade with motor vehicles and motorcycles** increased both as gross series by **9.4%** and as adjusted series according to the number of working days and to seasonality by **9.7%**. **The turnover for the market services provided to the population** increased both as gross series by **8.4%** and as adjusted series according to the number of working days and to seasonality by **8.3%**.

Monthly evolution of turnover in wholesale and retail, maintenance and repair of motor vehicles and motorcycles
(adjusted series according to the number of working days and to the seasonality)
- January 2010 – November 2015 -



AUTO = Trade with motor vehicles; MOTO= Trade with motorcycles, spare parts and related accessories, maintenance and repair of motorcycles

[Graphic data in xls format \(XI.2014-XI.2015\)](#)

**Monthly evolution of the turnover for the market services provided to the population
(adjusted series according to the number of working days and to the seasonality)
- January 2010 – November 2015 -**



Graphic data in xls format (XI.2014-XI.2015)

**Turnover indices for the trade with motor vehicles and motorcycles and
market services provided to the population**

		NOVEMBER 2015 In % compared to:		1.I-30.XI.2015/ 1.I-30.XI.2014 -%-
		OCTOBER 2015	NOVEMBER 2014	
Total wholesale and retail, maintenance and repair of motor vehicles and motorcycles	B	100.3	113.7	109.4
	S	101.9	113.4	109.7
Trade with motor vehicles	B	100.6	122.7	118.3
	S	104.8	124.7	117.9
Maintenance and repair of motor vehicles	B	99.1	108.3	106.1
	S	102.0	108.5	106.7
Trade with spare parts and accessories for motor vehicles	B	100.3	104.0	99.7
	S	101.3	103.7	99.8
Trade with motorcycles, spare parts and related accessories; maintenance and repair of motorcycles	B	113.4	156.4	117.3
	S	101.5	126.4	115.0
Market services provided to the population – total	B	94.7	115.0	108.4
	S	100.3	114.7	108.3
out of which:				
Hotels and restaurants	B	91.4	120.8	107.3
	S	98.7	119.9	107.0
Gambling and other recreational activities	B	100.0	99.1	105.4
	S	101.6	100.1	105.2
Activities of travel agencies and tour operators; other travel booking and assistance services	B	98.0	134.5	120.2
	S	99.3	125.8	110.7
Hairdressing and other embellishment activities	B	99.9	119.1	114.1
	S	102.0	116.8	114.0
Washing, cleaning (dry) of textile articles and fur products	B	91.1	100.5	99.5
	S	95.4	101.4	100.0

Note: B= gross series; S= adjusted series according to the number of working days and to seasonality

Table data in xls format

November 2015 compared to October 2015

Compared to the previous month, in November 2015, **the turnover of wholesale and retail, the maintenance and repair of motor vehicles and motorcycles, gross series** increased by 0.3% due to rises in the trade with motorcycles, spare parts and related accessories; maintenance and repair of motorcycles (+13.4%), in the trade with motor vehicles (+0.6%) and in the trade with spare parts and accessories for motor vehicles (+0.3%). There were drops in the maintenance and repair activities of motor vehicles (-0.9%).

The turnover of wholesale and retail, the maintenance and repair of motor vehicles and motorcycles, adjusted series according to the number of working days and to the seasonality increased by 1.9% in November 2015, compared to the previous month.

As to the **market services provided to the population**, there was a decrease of 5.3% in the turnover, **gross series**, in November 2015 compared to the previous month, due to drops in the activities of washing, cleaning and dyeing of textiles and furs (-8.9%), in the activities of hotels and restaurants (-8.6%), in the activities of travel agencies and tour operators (-2.0%) and in the services of hairdressing and other embellishment activities (-0.1%). The activities of gambling and other recreational activities maintained the same level.

The turnover volume for the **market services provided to the population, adjusted series according to the number of working days and to the seasonality**, increased by 0.3% in November 2015 compared to the previous month.

November 2015 compared to November 2014

Compared to November 2014, in November 2015, **the turnover of wholesale and retail, the maintenance and repair of motor vehicles and motorcycles, gross series**, increased by 13.7% due to rises in the trade with motorcycles, spare parts and related accessories; the maintenance and repair of motorcycles (+56.4%), in the trade with motor vehicles (+22.7%), in the maintenance and repair activities of motor vehicles (+8.3%) and in the trade with spare parts and accessories for motor vehicles (+4.0%).

In November 2015, the turnover volume for the **market services provided to the population, adjusted series according to the number of working days and to the seasonality**, increased per total by 13.4% compared to November 2014.

In November 2015, **the market services provided to the population, gross series** registered a turnover of 15.0% more compared to November 2014 mainly due to rises in the activities of travel agencies and tour operators (+34.5%), in the activities of hotels and restaurants (+20.8%), in the hairdressing and other embellishment activities (+19.1%) and in the activities of washing, cleaning and dyeing of textiles and furs (+0.5%). There was a decrease of 0.9% in the activities of gambling and other recreational activities.

In November 2015, **the market services provided to the population, adjusted series according to the number of working days and to the seasonality** increased by 14.7% compared to November 2014.

Period 1.I-30.XI.2015 compared to period 1.I-30.XI.2014

In the period 1.I-30.XI.2015, compared to the period 1.I-30.XI.2014, **the turnover of wholesale and retail, the maintenance and repair of motor vehicles and motorcycles, gross series**, increased by 9.4% due to rises in the trade with motor vehicles (+18.3%), in the trade with motorcycles, spare parts and related accessories; the maintenance and repair of motorcycles (+17.3%) and in the maintenance and repair of motor vehicles (+6.1%). There were drops in the trade with spare parts and accessories for motor vehicles (-0.3%).

In the period 1.I-30.XI.2015, **the turnover of wholesale and retail, the maintenance and repair of motor vehicles and motorcycles, adjusted series according to the number of working days and to the seasonality**, increased per total by 9.7% compared to the period 1.I-30.XI.2014.

In the period 1.I-30.XI.2015, **the market services provided to the population, gross series** registered a turnover of 8.4% more compared to the period 1.I-30.XI.2014 due to rises in the activities of travel agencies and tour operators (+20.2%), in the hairdressing and other embellishment activities (+14.1%), in the activities of hotels and restaurants (+7.3%) and in the activities of gambling and other recreational activities (+5.4%). There were drops in the activities of washing, cleaning and dyeing of textiles and furs (-0.5%).

In the period 1.I-30.XI.2015, **the market services provided to the population, adjusted series according to the number of working days and to the seasonality** registered a turnover of 8.3% more compared to the period 1.I-30.XI.2014.

Additional information:

For the correct interpretation of results, kindly see the [Methodological Note attached to the press release on the homepage](#).

For additional information, kindly see the statistical publication Monthly Statistical Bulletin (date of issue January 22, 2016) and on the line data base TEMPO of the NIS (data for November 2015 will be available on January 15, 2016).

The next issue of the press release will be on Friday, February 12, 2016.

The archive of the press releases: <http://www.insse.ro/cms/ro/content/arhiva-comunicatelor-de-presa>

The Department of Communication

e-mail: birou presa@insse.ro

Tel: +4021 3181869