

Domain: Trade - services

In June 2016, the turnover of the trade with motor vehicles increased by 21.2% compared to June 2015 and the turnover of the market services provided to the population increased by 10.8%

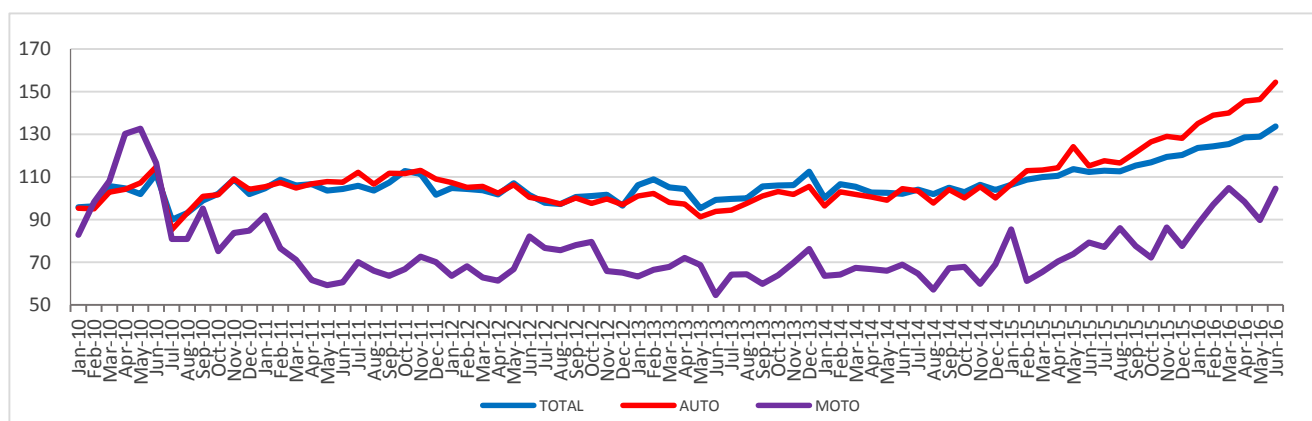
- Compared to the previous month, in June 2016, **the turnover of the trade with motor vehicles and motorcycles** increased both as gross series by **10.0%** and as adjusted series according to the number of working days and to seasonality by **3.8%**. **The turnover of the market services provided to the population** increased compared to the previous month as gross series by **7.8%** and as adjusted series according to the number of working days and to seasonality maintained the same level.
- Compared to the corresponding month of the previous year, **the turnover of the trade with motor vehicles and motorcycles** increased both as gross series by **21.2%** % and as adjusted series according to the number of working days and to seasonality by **19.1%**. Compared to the corresponding month of the previous year, **the turnover of the market services provided to the population** increased both as gross series by **10.8%** and as adjusted series according to the number of working days and to seasonality by **9.8%**.
- Compared to Semester I 2015, in Semester I 2016 **the turnover of the trade with motor vehicles and motorcycles** increased both as gross series by **16.9%** and as adjusted series according to the number of working days and to seasonality by **15.6%**. **The turnover of the market services provided to the population** increased, compared to Semester I 2015, both as gross series by **12.7%** and as adjusted series according to the number of working days and to seasonality by **12.6%**.

Monthly evolution of turnover in wholesale and retail, maintenance and repair of motor vehicles and motorcycles

(adjusted series according to the number of working days and to the seasonality)

- January 2010 – June 2016 -

-2010=100-

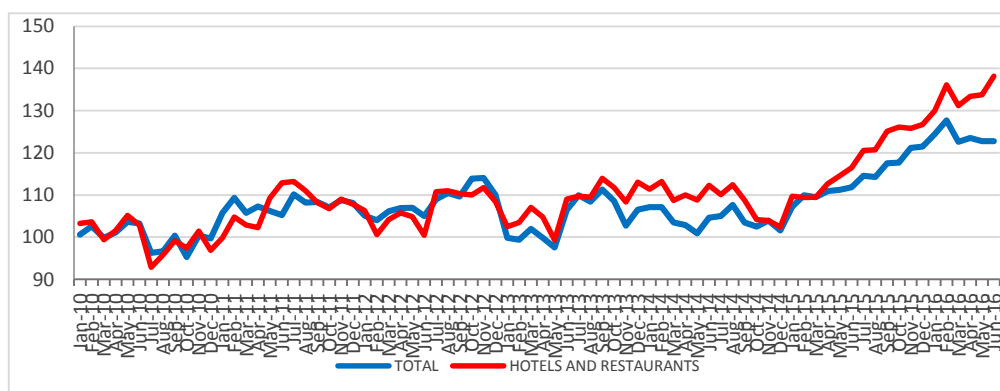


AUTO = Trade with motor vehicles; MOTO= Trade with motorcycles, spare parts and related accessories, maintenance and repair of motorcycles

Graphic data in xls format (VI.2015-VI.2016)

**Monthly evolution of the turnover for the market services provided to the population
(adjusted series according to the number of working days and to the seasonality)
- January 2010 – June 2016 -**

-2010=100-



[Graphic data in xls format \(VI.2015-VI.2016\)](#)

**Turnover indices for the trade with motor vehicles and motorcycles and
market services provided to the population**

		JUNE 2016 in % compared to:		Semester I 2016/ Semester I 2015 -%-
		MAI 2016	IUNIE 2015	
Total wholesale and retail, maintenance and repair of motor vehicles and motorcycles	B	110.0	121.2	116.9
	S	103.8	119.1	115.6
Trade with motor vehicles	B	112.5	135.1	127.6
	S	105.6	134.1	125.3
Maintenance and repair of motor vehicles	B	102.7	116.8	115.4
	S	102.7	115.7	114.3
Trade with spare parts and accessories for motor vehicles	B	108.2	101.5	102.0
	S	100.3	100.5	102.1
Trade with motorcycles, spare parts and related accessories; maintenance and repair of motorcycles	B	123.8	139.4	137.8
	S	116.4	131.8	133.6
Market services provided to the population – total	B	107.8	110.8	112.7
	S	100.0	109.8	112.6
out of which:				
Hotels and restaurants	B	111.2	117.8	121.0
	S	103.3	118.7	119.4
Gambling and other recreational activities	B	97.5	97.8	99.6
	S	100.9	98.3	100.5
Activities of travel agencies and tour operators; other travel booking and assistance services	B	113.9	104.3	109.1
	S	97.7	109.7	113.4
Hairdressing and other embellishment activities	B	108.3	148.2	133.4
	S	105.5	149.9	132.2
Washing, cleaning (dry) of textile articles and fur products	B	102.0	106.8	111.0
	S	103.1	108.5	111.3

Note: B= gross series; S= adjusted series according to the number of working days and to seasonality

[Graphic data in xls format](#)

June 2016 compared to May 2016

Compared to the previous month, in June 2016, **the turnover of wholesale and retail, the maintenance and repair of motor vehicles and motorcycles, gross series**, increased by 10.0% due to rises in the trade with motorcycles, spare parts and related accessories; maintenance and repair of motorcycles (+23.8%), in the trade with motor vehicles (+12.5%), in the trade with spare parts and accessories for motor vehicles (+8.2%) and in the maintenance and repair activities of motor vehicles (+2.7%).

The turnover of wholesale and retail, the maintenance and repair of motor vehicles and motorcycles, adjusted series according to the number of working days and to the seasonality, increased by 3.8% in June 2016 compared to the previous month.

As to the **market services provided to the population**, in June 2016, compared to the previous month, there was an increase of 7.8% in the turnover, **gross series**, due to rises in the activities of travel agencies and tour operators (+13.9%), in the activities of hotels and restaurants (+11.2%), in the services of hairdressing and other embellishment activities (+8.3%) and in the activities of washing, cleaning and dyeing of textiles and furs (+2.0%). There were drops in the activities of gambling and other recreational activities (-2.5%).

Compared to the previous month, in June 2016, the turnover **for the services provided to the population, adjusted series according to the number of working days and to the seasonality** maintained the same level.

June 2016 compared to June 2015

Compared to June 2015, in June 2016, **the turnover of wholesale and retail, the maintenance and repair of motor vehicles and motorcycles, gross series**, increased by 21.2% due to rises in the trade with motorcycles, spare parts and related accessories; the maintenance and repair of motorcycles (+39.4%), in the trade with motor vehicles (+35.1%), in the maintenance and repair activities of motor vehicles (+16.8%) and in the trade with spare parts and accessories for motor vehicles (+1.5%).

In June 2016, **the turnover of wholesale and retail, the maintenance and repair of motor vehicles and motorcycles, adjusted series according to the number of working days and to the seasonality**, increased per total by 19.1% compared to June 2015.

In June 2016, **the market services provided to the population, gross series** registered a turnover of 10.8% more compared to June 2015 due to rises in the hairdressing and other embellishment activities (+48.2%), in the activities of hotels and restaurants (+17.8%), in the activities of washing, cleaning and dyeing of textiles and furs (+6.8%) and in the activities of travel agencies and tour operators (+4.3%). There was a decrease of 2.2% in the activities of gambling and other recreational activities.

In June 2016, **the market services provided to the population, adjusted series according to the number of working days and to the seasonality** increased by 9.8% compared to June 2015.

Semester I 2016 compared to Semester I 2015

Compared to Semester I 2015, in Semester I 2016, **the turnover of wholesale and retail, the maintenance and repair of motor vehicles and motorcycles, gross series**, increased by 16.9% due to rises in the trade with motorcycles, spare parts and related accessories; the maintenance and repair of motorcycles (+37.8%) in the trade with motor vehicles (+27.6%), in the maintenance and repair activities of motor vehicles (+15.4%) and in the trade with spare parts and accessories for motor vehicles (+2.0%).

Compared to Semester I 2015, in Semester I 2016, **the turnover of wholesale and retail, the maintenance and repair of motor vehicles and motorcycles, adjusted series according to the number of working days and to the seasonality**, increased by 15.6%.

In Semester I 2016, **the market services provided to the population, gross series** registered a turnover of 12.7% more compared to Semester I 2015 due to rises in the hairdressing and other embellishment activities (+33.4%), in the activities of hotels and restaurants (+21.0%), in the activities of washing, cleaning and dyeing of textiles and furs (+11.0%) and in the activities of travel agencies and tour operators (+9.1%). There was a decrease of 0.4% in the activities of gambling and other recreational activities.

In Semester I 2016, **the market services provided to the population, adjusted series according to the number of working days and to the seasonality** registered a turnover of 12.6% more compared to Semester I 2015.

Additional information:

For the correct interpretation of results, kindly see the [Methodological Note attached to the press release on the homepage](#).

For additional information, kindly see the statistical publication Monthly Statistical Bulletin (date of issue August 26, 2016) and the online database TEMPO of the INS (data for June 2016 will be available on August 16, 2016).

The next issue of the press release will be on Tuesday, September 13, 2016.

The archive of the press releases: <http://www.insse.ro/cms/en/comunicate-de-presa-view>

The Directorate of Communication

e-mail: birou presa@insse.ro

Tel: +4021 3181869