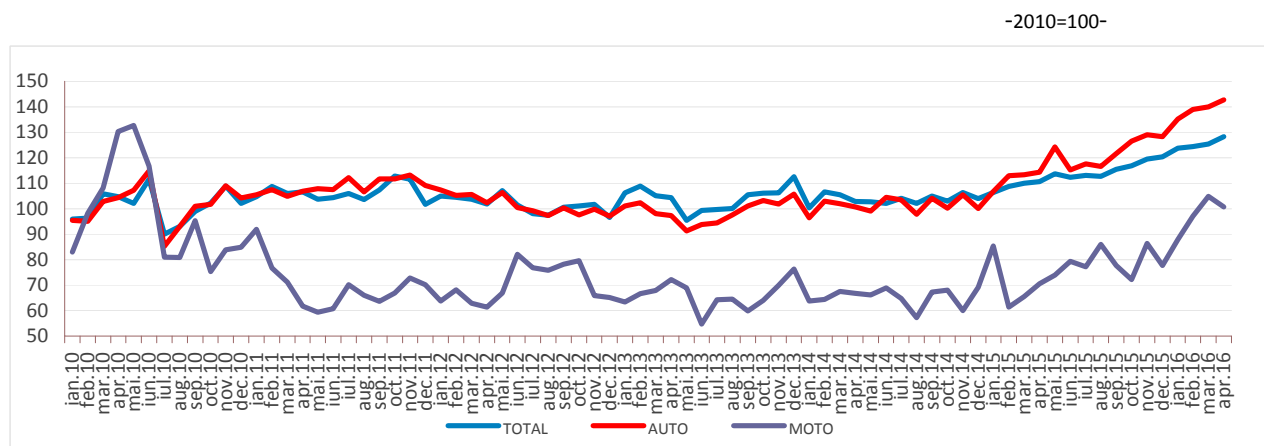


Domain: Trade - services

In April 2016, the turnover of the trade with motor vehicles increased by 14.9% compared to April 2015 and the turnover of the market services provided to the population increased by 9.6%

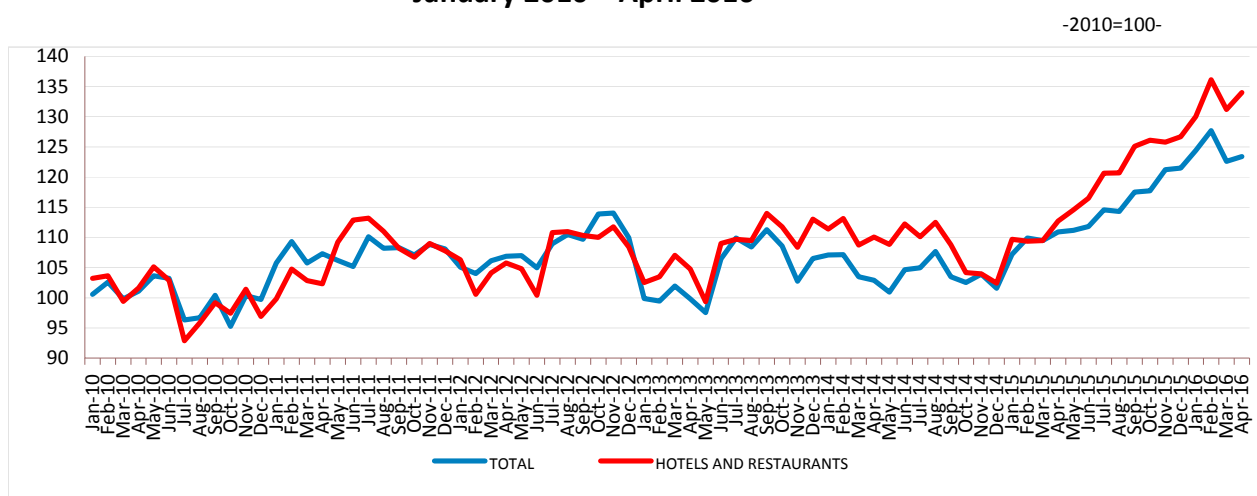
- Compared to the previous month, in April 2016, **the turnover of the trade with motor vehicles and motorcycles** decreased as gross series by **1.4%** and increased as adjusted series according to the number of working days and to seasonality by **2.2%**. **The turnover of the market services provided to the population** decreased compared to the previous month as gross series by **2.1%** and increased as adjusted series according to the number of working days and to seasonality by **0.6%**.
- Compared to the corresponding month of the previous year, **the turnover of the trade with motor vehicles and motorcycles** increased both as gross series by **14.9%** and as adjusted series according to the number of working days and to seasonality by **15.9%**. Compared to the corresponding month of the previous year, **the turnover of the market services provided to the population** increased both as gross series by **9.6%** and as adjusted series according to the number of working days and to seasonality by **11.3%**.
- Compared to the period 1.I-30.IV.2015, in the period 1.I-30.IV.2016, **the turnover of the trade with motor vehicles and motorcycles** increased both as gross series by **15.7%** and as adjusted series according to the number of working days and to seasonality by **15.1%**. **The turnover of the market services provided to the population** increased both as gross series by **13.9%** and as adjusted series according to the number of working days and to seasonality by **13.8%**.

**Monthly evolution of turnover in wholesale and retail, maintenance and repair
of motor vehicles and motorcycles
(adjuncted series according to the number of working days and to the seasonality)
- January 2010 – April 2016 -**



AUTO = Trade with motor vehicles; MOTO= Trade with motorcycles, spare parts and related accessories, maintenance and repair of motorcycles
[Graphic data in xls format \(IV.2015-IV.2016\)](#)

**Monthly evolution of the turnover for the market services provided to the population
(adjusted series according to the number of working days and to the seasonality)
- January 2010 – April 2016 -**



Graphic data in xls format (IV.2015-IV.2016)

**Turnover indices for the trade with motor vehicles and motorcycles and
market services provided to the population**

		APRIL 2016 in % compared to:		1.I-30.IV.2016/ 1.I-30.IV.2015 -%-
		MARCH 2016	APRIL 2015	
Total wholesale and retail, maintenance and repair of motor vehicles and motorcycles	B	98.6	114.9	115.7
	S	102.2	115.9	115.1
Trade with motor vehicles	B	97.6	121.6	125.2
	S	101.9	124.9	124.5
Maintenance and repair of motor vehicles	B	103.2	116.8	114.5
	S	105.5	115.2	114.2
Trade with spare parts and accessories for motor vehicles	B	98.6	103.9	102.8
	S	100.5	104.8	103.5
Trade with motorcycles, spare parts and related accessories; maintenance and repair of motorcycles	B	105.3	141.2	144.4
	S	96.0	142.7	138.1
Market services provided to the population – total	B	97.9	109.6	113.9
	S	100.6	111.3	113.8
out of which:				
Hotels and restaurants	B	100.9	120.9	123.6
	S	102.1	118.9	120.4
Gambling and other recreational activities	B	90.9	89.8	100.8
	S	95.4	90.8	101.5
Activities of travel agencies and tour operators; other travel booking and assistance services	B	99.1	110.7	108.7
	S	100.2	113.1	114.6
Hairdressing and other embellishment activities	B	110.9	136.1	129.0
	S	107.1	132.2	127.9
Washing, cleaning (dry) of textile articles and fur products	B	100.3	115.5	111.6
	S	106.0	115.6	112.3

Note: B= gross series; S= adjusted series according to the number of working days and to seasonality

Graphic data in xls format

April 2016 compared to March 2016

Compared to the previous month, in April 2016 **the turnover of wholesale and retail, the maintenance and repair of motor vehicles and motorcycles, gross series**, decreased by 1.4% due to drops in the trade with motor vehicles (-2.4%) and in the trade with spare parts and accessories for motor vehicles (-1.4%). There were rises in the trade with motorcycles, spare parts and related accessories; maintenance and repair of motorcycles (+5.3%) and in the maintenance and repair activities of motor vehicles (+3.2%).

The turnover of wholesale and retail, the maintenance and repair of motor vehicles and motorcycles, adjusted series according to the number of working days and to the seasonality, increased by 2.2% in April 2016 compared to the previous month.

As to the **market services provided to the population**, in April 2016, compared to the previous month, there was a decrease of 2.1% in the turnover, **gross series**, due to drops in the activities of gambling and other recreational activities (-9.1%) and in the activities of travel agencies and tour operators (-0.9%). There were rises in the services of hairdressing and other embellishment activities (+10.9%), in the activities of hotels and restaurants (+0.9%) and in the activities of washing, cleaning and dyeing of textiles and furs (+0.3%).

The turnover of wholesale and retail, the maintenance and repair of motor vehicles and motorcycles, adjusted series according to the number of working days and to the seasonality increased by 0.6% in April 2016 compared to the previous month.

April 2016 compared to April 2015

Compared to April 2015, in April 2016, **the turnover of wholesale and retail, the maintenance and repair of motor vehicles and motorcycles, gross series**, increased by 14.9% due to rises in the trade with motorcycles, spare parts and related accessories; the maintenance and repair of motorcycles (+41.2%), in the trade with motor vehicles (+21.6%), in the maintenance and repair activities of motor vehicles (+16.8%) and in the trade with spare parts and accessories for motor vehicles (+3.9%).

In April 2016, **the turnover of wholesale and retail, the maintenance and repair of motor vehicles and motorcycles, adjusted series according to the number of working days and to the seasonality**, increased per total by 15.9% compared to April 2015.

In April 2016, **the market services provided to the population, gross series** registered a turnover of 9.6% more compared to April 2015 due to rises in the hairdressing and other embellishment activities (+36.1%), in the activities of hotels and restaurants (+20.9%), in the activities of washing, cleaning and dyeing of textiles and furs (+15.5%) and in the activities of travel agencies and tour operators (+10.7%). There was a decrease of 10.2% in the activities of gambling and other recreational activities.

In April 2016, **the market services provided to the population, adjusted series according to the number of working days and to the seasonality** increased by 11.3% compared to April 2015.

Period 1.I-30.IV.2016 compared to period 1.I-30.IV.2015

Compared to the period 1.I-30.IV.2015, in the period 1.I-30.IV.2016, **the turnover of wholesale and retail, the maintenance and repair of motor vehicles and motorcycles, gross series**, increased by 15.7% due to rises in the trade with motorcycles, spare parts and related accessories; the maintenance and repair of motorcycles (+44.4%), in the trade with motor vehicles (+25.2%), in the maintenance and repair activities of motor vehicles (+14.5%) and in the trade with spare parts and accessories for motor vehicles (+2.8%).

Compared to the period 1.I-30.IV.2015, in the period 1.I-30.IV.2016, **the turnover of wholesale and retail, the maintenance and repair of motor vehicles and motorcycles, adjusted series according to the number of working days and to the seasonality**, increased by 15.1%.

In the period 1.I-30.IV.2016, **the market services provided to the population, gross series** registered a turnover of 13.9% more compared to the period 1.I-30.IV.2015 due to rises in the hairdressing and other embellishment activities (+29.0%), in the activities of hotels and restaurants (+23.6%), in the activities of washing, cleaning and dyeing of textiles and furs (+11.6%), in the activities of travel agencies and tour operators (+8.7%) and in the activities of gambling and other recreational activities (+0.8%).

In the period 1.I-30.IV.2016, **the market services provided to the population, adjusted series according to the number of working days and to the seasonality** increased by 13.8 % compared to the period 1.I-30.IV.2015.

Additional information:

For the correct interpretation of results, kindly see the [Methodological Note attached to the press release on the homepage](#).

For additional information, kindly see the statistical publication Monthly Statistical Bulletin (date of issue June 24, 2016) and the on line database TEMPO of the NIS (data for April 2016 will be available on June 15, 2016).

The next issue of the press release will be on Wednesday, July 13, 2016.

The archive of the press releases: <http://www.insse.ro/cms/en/comunicate-de-presa-view>

The Department of Communication

e-mail: birou presa@insse.ro

Tel: +4021 3181869