

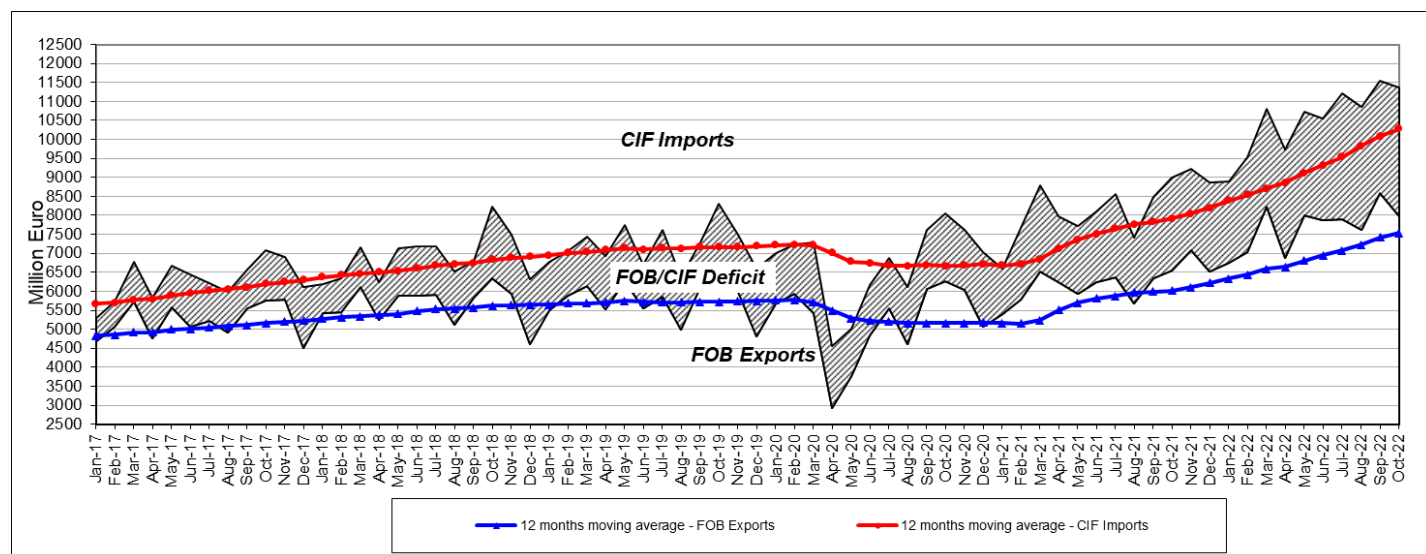


Domain: International trade in goods

## International trade in goods in October and in the period 1.I-31.X 2022

- In October 2022, the FOB exports amounted to 7964.3 million euro and the CIF imports amounted to 11367.8 million euro, a commercial deficit of 3403.5 million euro being registered.
- Compared to October 2021, the exports increased by 21.7% and the imports increased by 26.2% in October 2022.
- In the period 1.I-31.X 2022, the FOB exports amounted to 76833.3 million euro and the CIF imports amounted to 105238.0 million euro.
- In the period 1.I-31.X 2022, the exports increased by 25.8% and the imports increased by 31.1%, compared to the period 1.I-31.X 2021.
- In the period 1.I-31.X 2022, the FOB-CIF trade deficit was of 28404.7 million euro, 9196.2 million euro more than in the period 1.I-31.X 2021.

Exports, imports and FOB/CIF trade balance during January 2017 – October 2022



[Graph data in .xls format.](#)

In the period 1.I-31.X 2022, important shares in the structure of exports and imports are represented by the following groups of goods: machinery and transport equipment (41.5% for export and 32.5% for import) and other manufactured goods<sup>1)</sup> (30.1% for export and 28.7% for import).

**The international trade, by product groups according to SITC Rev.4<sup>2)</sup>, in the period 1.I-31.X 2022**

	FOB Exports			CIF Imports		
	1.I-31.X 2022			1.I-31.X 2022		
	Million euro	Share in total export (%)	in % as against 1.I-31.X 2021	Million euro	Share in total import (%)	in % as against 1.I-31.X 2021
<b>TOTAL</b>	<b>76833.3</b>	<b>100.0</b>	<b>+25.8</b>	<b>105238.0</b>	<b>100.0</b>	<b>+31.1</b>
of which, in relation to the EU 27	55720.2	72.5	+25.6	74233.0	70.5	+27.2
<b>Food and live animals</b>	<b>6386.4</b>	<b>8.3</b>	<b>+26.9</b>	<b>8119.5</b>	<b>7.7</b>	<b>+23.8</b>
of which, in relation to the EU 27	2893.2	3.8	+35.4	6677.2	6.3	+18.2
<b>Beverages and tobacco</b>	<b>1449.0</b>	<b>1.9</b>	<b>+17.4</b>	<b>889.0</b>	<b>0.8</b>	<b>+24.2</b>
of which, in relation to the EU 27	931.5	1.2	-2.8	652.1	0.6	+21.0
<b>Crude materials, inedible, except fuels<sup>3)</sup></b>	<b>3479.8</b>	<b>4.5</b>	<b>+21.4</b>	<b>3223.9</b>	<b>3.1</b>	<b>+30.9</b>
of which, in relation to the EU 27	2295.0	3.0	+36.9	1644.8	1.6	+15.8
<b>Mineral fuels, lubricants and related materials</b>	<b>5960.9</b>	<b>7.8</b>	<b>+185.4</b>	<b>12783.9</b>	<b>12.1</b>	<b>+127.3</b>
of which, in relation to the EU 27	2918.0	3.8	+197.4	5605.5	5.3	+236.4
<b>Animal and vegetable oils, fats and waxes</b>	<b>551.6</b>	<b>0.7</b>	<b>+113.9</b>	<b>351.7</b>	<b>0.3</b>	<b>+91.5</b>
of which, in relation to the EU 27	460.5	0.6	+173.3	240.1	0.2	+49.7
<b>Chemicals and related products, n.e.s.</b>	<b>3765.8</b>	<b>4.9</b>	<b>+19.6</b>	<b>15358.8</b>	<b>14.6</b>	<b>+28.1</b>
of which, in relation to the EU 27	2705.9	3.5	+25.6	11677.1	11.1	+22.1
<b>Manufactured goods classified mainly by raw materials</b>	<b>13381.8</b>	<b>17.4</b>	<b>+23.4</b>	<b>19401.2</b>	<b>18.4</b>	<b>+26.9</b>
of which, in relation to the EU 27	9951.8	13.0	+23.5	13606.1	12.9	+24.3
<b>Machinery and transport equipment</b>	<b>31904.4</b>	<b>41.5</b>	<b>+15.6</b>	<b>34183.4</b>	<b>32.5</b>	<b>+20.5</b>
of which, in relation to the EU 27	25548.5	33.3	+18.0	26184.8	24.9	+20.0
<b>Miscellaneous manufactured articles</b>	<b>9769.5</b>	<b>12.7</b>	<b>+23.3</b>	<b>10888.9</b>	<b>10.3</b>	<b>+20.1</b>
of which, in relation to the EU 27	7938.9	10.3	+21.6	7915.1	7.5	+20.7
<b>Goods not elsewhere classified in SITC</b>	<b>184.1</b>	<b>0.2</b>	<b>+93.5</b>	<b>37.6</b>	<b>*)</b>	<b>+58.0</b>
of which, in relation to the EU 27	76.8	0.1	+101.6	30.2	*)	+89.2

<sup>\*)</sup> Under 0.05

Note: The differences between total and data obtained by cumulating the different structures used are due to the roundings performed.

In the period 1.I-31.X 2022, the Intra-EU27 trade in goods amounted to 55720.2 million euro for dispatches and to 74233.0 million euro for arrivals, representing 72.5% of total exports and 70.5% of total imports.

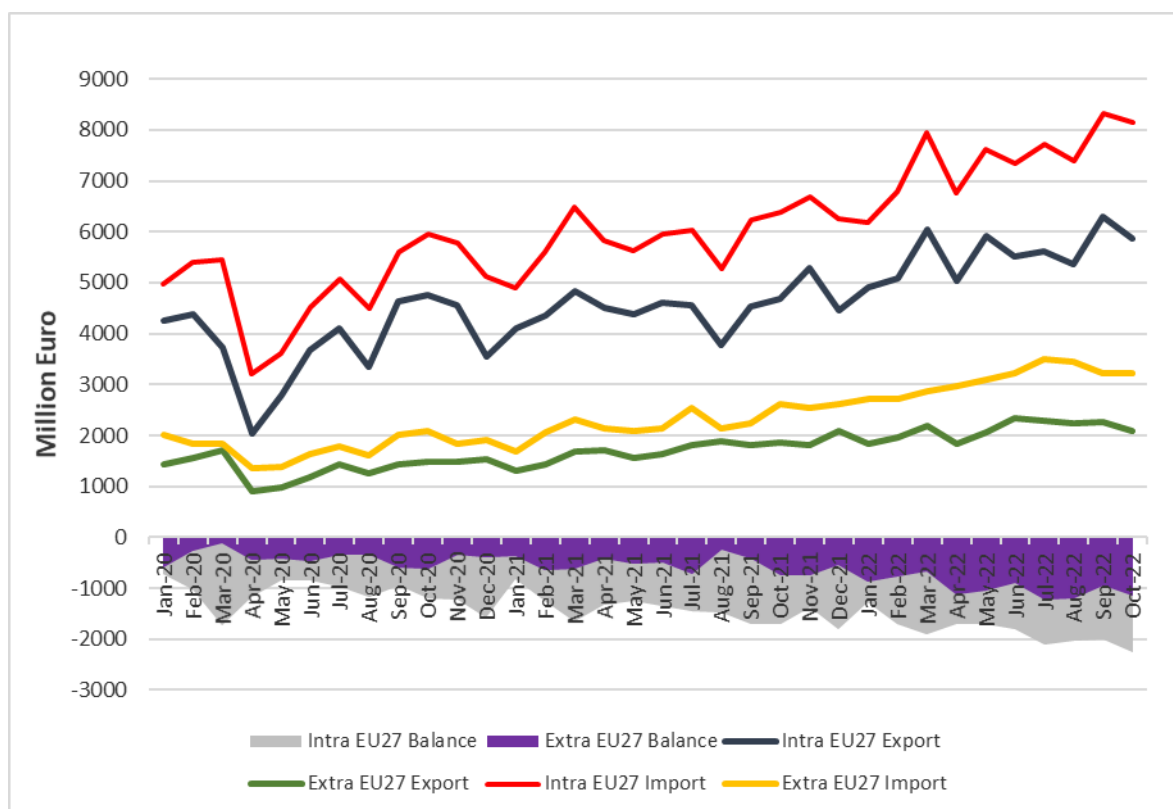
In the period 1.I-31.X 2022, the Extra-EU27 trade in goods amounted to 21113.1 million euro for exports and to 31005.0 million euro for imports, representing 27.5% of total exports and 29.5% of total imports.

<sup>1)</sup> Manufactured goods mainly grouped by the raw material (iron, steel, rubber, metal, etc.) and miscellaneous manufactured articles (clothes and accessories, footwear, etc.)

<sup>2)</sup> SITC, Rev.4. - Standard International Trade Classification

<sup>3)</sup> Mainly refers to oil seeds and oleaginous fruits; metalliferous ores and metals scrap; cork and wood; other crude animal and vegetable materials

## EXPORTS, IMPORTS AND FOB-CIF TRADE BALANCE FOR INTRA-EU27 AND EXTRA-EU27 DURING JANUARY 2020 – OCTOBER 2022



[Graph data in .xls format.](#)

### Additional information:

**FOB/CIF trade balance** is calculated on the basis of the FOB export value and CIF import value as difference between them. The negative value of the trade balance is called deficit and the positive one is called excedent.

**FOB price** (Free on Board) represents **the price at the border of the exporting country**, which includes the value of the commodity, all transport expenditures to the shipping point as well as all the fees for the commodity to be loaded on board.

**CIF price** (Cost, Insurance, Freight) represents **the price at the border of the importing country**, including both components of FOB price and the cost of insurance as well as the cost of the international transport.

For a correct interpretation of the indicators, kindly see the [Methodological Notes](#).

The statistical data on exports (FOB), imports (CIF) and FOB-CIF trade balance, in both euro and lei, can be accessed in the [Annex](#) in .xls format related to the press release.

Details regarding the international trade in goods for September and the period 1.I-30.IX 2022 will be given in the *Statistical Bulletin of International Trade no.9/2022*, date of issue **December 19, 2022**.

Details regarding the international trade in goods for October and the period 1.I-31.X 2022 will be given in the *Statistical Bulletin of International Trade no.10/2022*, date of issue **January 19, 2023**.

The next press release on the international trade in goods, for November and the period 1.I-30.XI 2022, will be issued on **January 9, 2023**.

Press releases archive: <http://www.insse.ro/cms/en/comunicate-de-presa-view>

For international comparison, kindly see the Eurostat press release on international trade which will appear on **December 16, 2022** (<http://ec.europa.eu/eurostat>).

**Directorate of Communication**

e-mail: [birouipresa@insse.ro](mailto:birouipresa@insse.ro)

Phone: +4021 3181869