

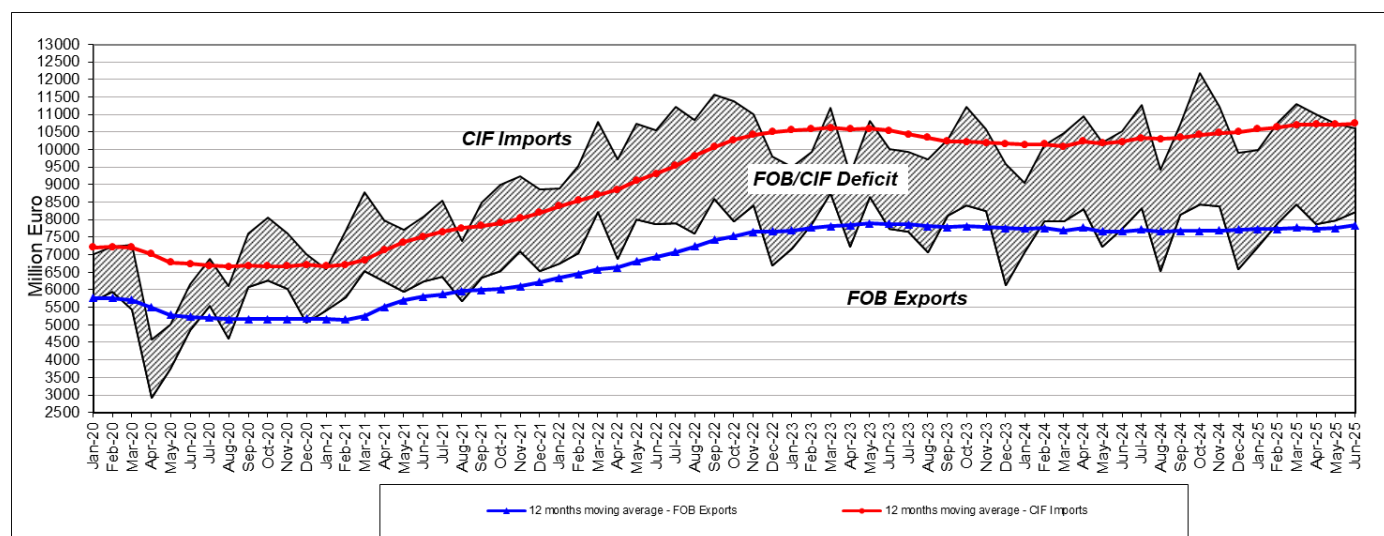


Domain: International trade in goods

International trade in goods in June and in the period 1.I-30.VI 2025

- In June 2025, the FOB exports amounted to 8218.4 million euro and the CIF imports amounted to 10592.0 million euro, a commercial deficit of 2373.6 million euro being registered.
- Compared to June 2024, the exports increased by 6.3% and the imports increased by 0.6% in June 2025.
- In the period 1.I-30.VI 2025, the FOB exports amounted to 47676.4 million euro and the CIF imports amounted to 64388.7 million euro.
- In the period 1.I-30.VI 2025, the exports increased by 3.1% and the imports increased by 4.9%, compared to the period 1.I-30.VI 2024.
- In the period 1.I-30.VI 2025, the FOB-CIF trade deficit was 16712.3 million euro, higher by 1617.8 million euro (+10.7%) than the one recorded in the period 1.I-30.VI 2024.

Exports, imports and FOB/CIF trade balance during January 2020 – June 2025



[Graph data in .xls format.](#)

In the period 1.I-30.VI 2025, important shares in the structure of exports and imports are represented by the following groups of goods: machinery and transport equipment (47.3% for export and 36.2% for import) and other manufactured goods¹⁾ (27.6% for export and 28.1% for import).

The international trade, by product groups according to SITC Rev.4²⁾, in the period 1.I-30.VI 2025

	FOB Exports			CIF Imports		
	1.I-30.VI 2025			1.I-30.VI 2025		
	Million euro	Share in total export (%)	in % as against 1.I-30.VI 2024	Million euro	Share in total import (%)	in % as against 1.I-30.VI 2024
TOTAL	47676.4	100.0	+3.1	64388.7	100.0	+4.9
of which, in relation to the EU 27	34167.4	71.7	+1.5	46552.5	72.3	+3.4
Food and live animals	3382.9	7.1	+5.7	5873.2	9.1	+4.9
of which, in relation to the EU 27	1834.2	3.8	+11.0	5029.4	7.8	+5.0
Beverages and tobacco	1296.3	2.7	+11.1	634.0	1.0	+15.4
of which, in relation to the EU 27	736.1	1.5	+0.1	440.8	0.7	+17.0
Crude materials, inedible, except fuels³⁾	1363.6	2.9	-7.0	1499.1	2.3	-1.4
of which, in relation to the EU 27	707.4	1.5	-18.1	1060.5	1.6	-1.6
Mineral fuels, lubricants and related materials	2757.0	5.8	+34.5	5104.2	7.9	+9.1
of which, in relation to the EU 27	1067.8	2.2	+2.7	2241.2	3.5	+40.9
Animal and vegetable oils, fats and waxes	142.1	0.3	-26.5	178.2	0.3	+31.5
of which, in relation to the EU 27	126.4	0.3	-8.8	119.1	0.2	+2.6
Chemicals and related products, n.e.s.	2745.2	5.8	+7.0	9585.3	14.9	+6.6
of which, in relation to the EU 27	1680.7	3.5	+8.6	7445.0	11.6	+6.7
Manufactured goods classified mainly by raw materials	7093.7	14.9	-4.2	10894.7	16.9	+3.0
of which, in relation to the EU 27	5269.7	11.1	-3.5	7529.8	11.7	-1.0
Machinery and transport equipment	22557.6	47.3	+2.9	23339.6	36.2	+4.0
of which, in relation to the EU 27	17751.3	37.2	+3.0	17515.7	27.2	+0.3
Miscellaneous manufactured articles	6075.3	12.7	-1.5	7198.6	11.2	+5.3
of which, in relation to the EU 27	4888.4	10.3	-0.3	5128.4	8.0	+2.9
Goods not elsewhere classified in SITC	262.7	0.6	+92.5	81.8	0.1	+137.4
of which, in relation to the EU 27	105.3	0.2	+43.1	42.6	0.1	+43.7

Note: The differences between total and data obtained by cumulating the different structures used are due to the roundings performed.

In the period 1.I-30.VI 2025, the Intra-EU27 trade in goods amounted to 34167.4 million euro for dispatches and to 46552.5 million euro for arrivals, representing 71.7% of total exports and 72.3% of total imports.

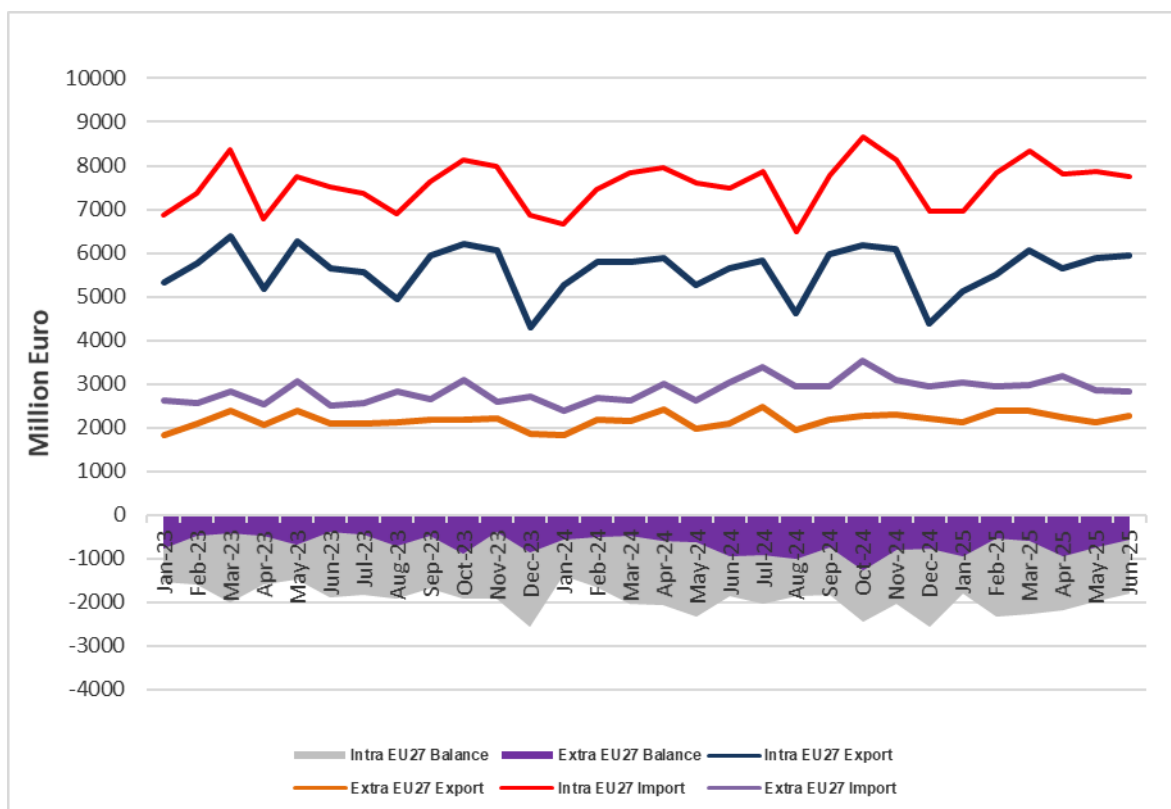
In the period 1.I-30.VI 2025, the Extra-EU27 trade in goods amounted to 13509.0 million euro for exports and to 17836.2 million euro for imports, representing 28.3% of total exports and 27.7% of total imports.

¹⁾ Manufactured goods mainly grouped by the raw material (iron, steel, rubber, metal, etc.) and miscellaneous manufactured articles (clothes and accessories, footwear, etc.)

²⁾ SITC, Rev.4. - Standard International Trade Classification

³⁾ Mainly refers to oil seeds and oleaginous fruits; metalliferous ores and metals scrap; cork and wood; other crude animal and vegetable materials

**Exports, imports and FOB-CIF trade balance for Intra-EU27 and Extra-EU27
during January 2023 – June 2025**



[Graph data in .xls format.](#)

Additional information:

FOB/CIF trade balance is calculated on the basis of the FOB export value and CIF import value as difference between them. The negative value of the trade balance is called deficit and the positive one is called excedent.

FOB price (Free on Board) represents **the price at the border of the exporting country**, which includes the value of the commodity, all transport expenditures to the shipping point as well as all the fees for the commodity to be loaded on board.

CIF price (Cost, Insurance, Freight) represents **the price at the border of the importing country**, including both components of FOB price and the cost of insurance as well as the cost of the international transport.

For a correct interpretation of the indicators, kindly see the [Methodological Notes](#).

The statistical data on exports (FOB), imports (CIF) and FOB-CIF trade balance, in both euro and lei, can be accessed in the [Annex](#) in .xls format related to the press release.

Details regarding the international trade in goods for May and the period 1.I-31.V 2025 will be given in the *Statistical Bulletin of International Trade no.5/2025*, date of issue **August 19, 2025**.

Details regarding the international trade in goods for June and the period 1.I-30.VI 2025 will be given in the *Statistical Bulletin of International Trade no.6/2025*, date of issue **September 18, 2025**.

The next press release on the international trade in goods, for July and the period 1.I-31.VII 2025, will be issued on **September 9, 2025**.

Press releases archive: <http://www.insse.ro/cms/en/comunicate-de-presa-view>

For international comparison, kindly see the Eurostat press release on international trade which will appear on **August 18, 2025** (<http://ec.europa.eu/eurostat>).

Directorate of European Affairs, International Cooperation and Communication

e-mail: biroupresa@insse.ro

Phone: +4021 3181869