



Domain: Agriculture

Subdomain: Livestock and animal production

In April 2015, compared to the previous month, the number of slaughtered sheep and goats increased over 5 times.

- *In April 2015, compared to the previous month, the number of slaughtered animals and poultry and their carcass weight increased for all species.*
- *Compared to the same month of 2014, the number of slaughtered animals and poultry and their carcass weight increased for cattle and pigs and decreased for sheep and goats and poultry.*

Table 1: Slaughtering of animals and poultry

	Slaughtered animals and poultry		Carcass weight	
	April 2015 as against:		April 2015 as against:	
	April 2014*)	March 2015*)	April 2014*)	March 2015*)
Cattle - total	117.2	144.7	116.0	153.3
Of which: in specialized industrial units (slaughter houses)	145.5	106.7	155.1	107.1
Pigs - total	114.4	120.2	115.9	122.8
Of which: in specialized industrial units (slaughter houses)	92.3	102.6	94.3	101.0
Sheep and goats - total	91.0	545.8	93.0	418.0
Of which: in specialized industrial units (slaughter houses)	78.2	67.7	92.6	81.3
Poultry - total	90.9	106.5	91.7	106.9
Of which: in specialized industrial units (slaughter houses)	104.6	103.2	107.1	103.5

*) Provisional data

[Table data in \(xls\) format](#)

Note: The data for the specialized industrial units (slaughter houses) have been obtained through exhaustive statistical surveys and the data for individual agricultural holdings from the Ministry of Agriculture and Rural Development.

Table 2: Average carcass weight of the slaughtered animals and poultry

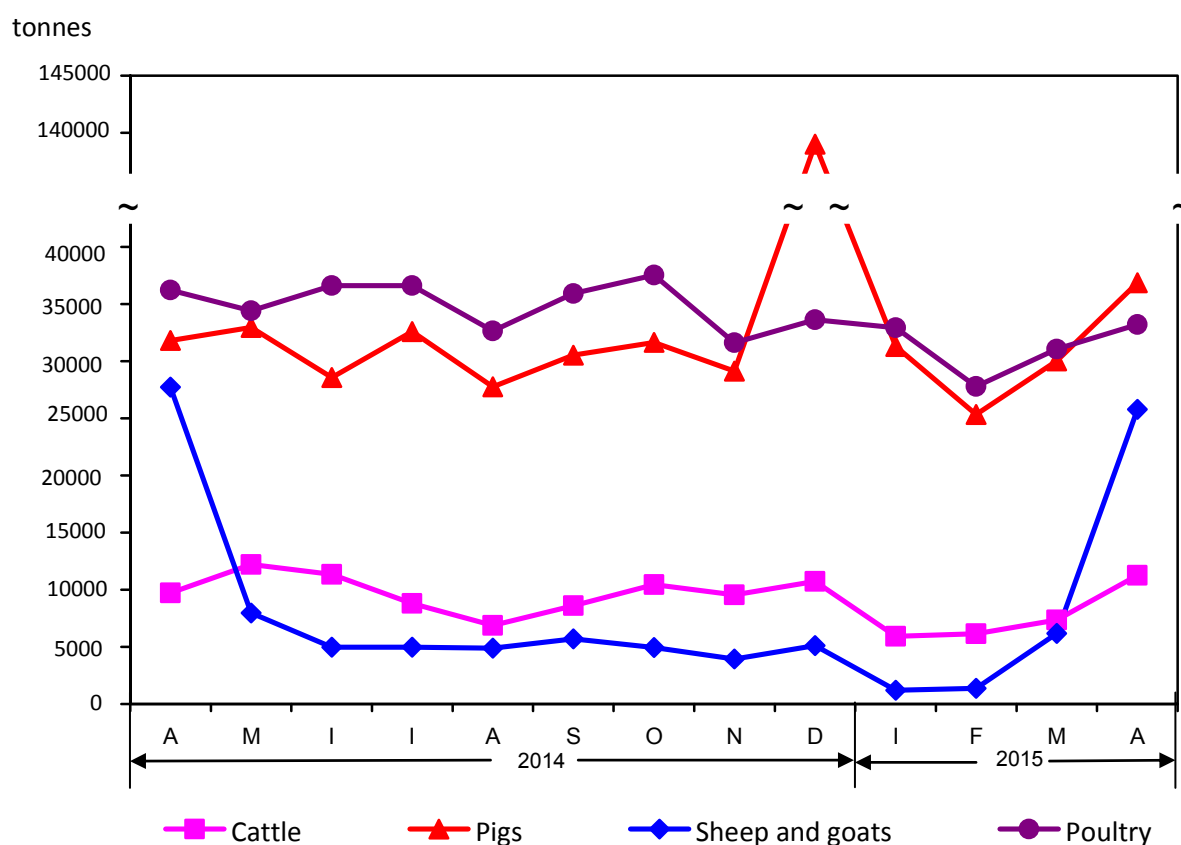
- kg -

	Average carcass weight		
	April 2014	March 2015	April 2015*)
Cattle - total	167.5	156.4	165.7
Of which: in specialized industrial units (slaughter houses)	208.9	221.9	222.8
Pigs - total	80.5	79.9	81.6
Of which: in specialized industrial units (slaughter houses)	81.4	84.5	83.1
Sheep and goats - total	8.2	10.9	8.4
Of which: in specialized industrial units (slaughter houses)	9.2	9.1	10.9
Poultry - total	1.6	1.6	1.6
Of which: in specialized industrial units (slaughter houses)	1.6	1.6	1.7

*) Provisional data

[Table data in \(xls\) format](#)

Chart: The evolution of the carcass weight of the slaughtered animals and poultry, in the period April 2014 - April 2015



[Chart data in \(xls\) format](#)

Additional information:

For the correct interpretation of the indicators, kindly see the [Methodological Notes](#).

For more information, see the Monthly Statistical Bulletin no. 4/2015, date of issue June 18, 2015.

The next issue of the press release will be on Thursday, July 9, 2015.

Press release archive: <http://www.insse.ro/cms/en/content/press-releases>

The Communication Department

e-mail: birou presa@insse.ro

Tel: +4021 3181869