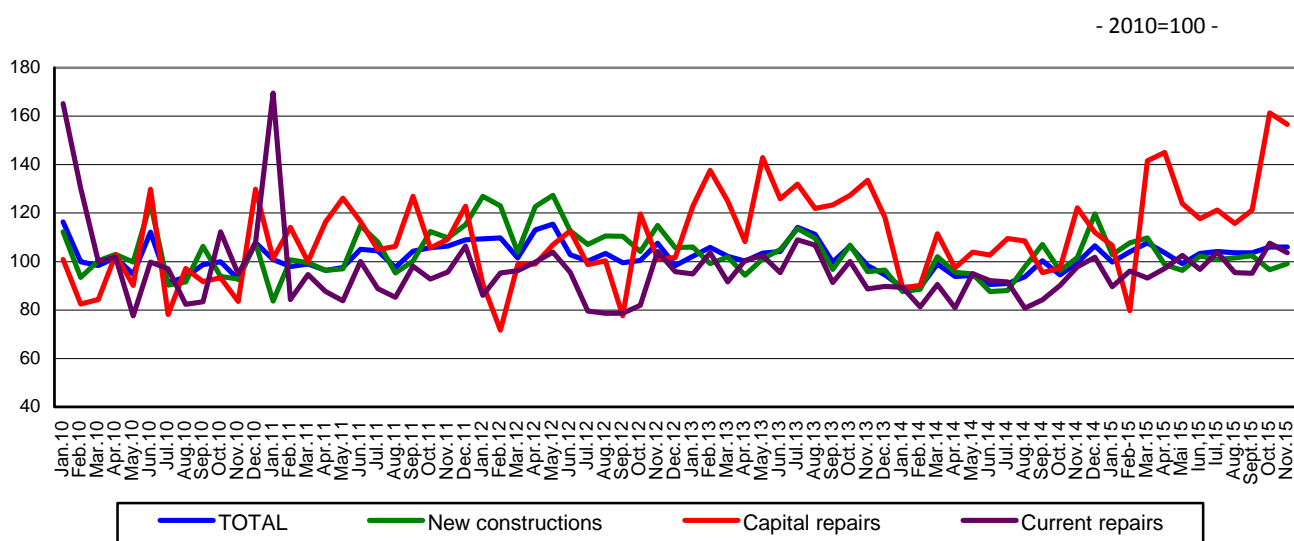


Domain: Construction

## THE CONSTRUCTION WORKS INCREASED BY 9.4% IN THE PERIOD 1.I-30.XI.2015

- In November 2015, the volume of construction works increased, compared to the previous month, as gross series by 7.0% and maintained the same level as adjusted series by the number of working days and by seasonality;
- Compared to the corresponding month of the previous year, the volume of construction works increased both as gross series and as adjusted series by the number of working days and by seasonality by 5.9% and by 6.5%, respectively.
- In the period 1.I-30.XI.2015, the volume of construction works increased compared to the period 1.I-30.XI.2014, both as gross series and adjusted series by the number of working days and by seasonality by 9.4% and by 10.2%, respectively.

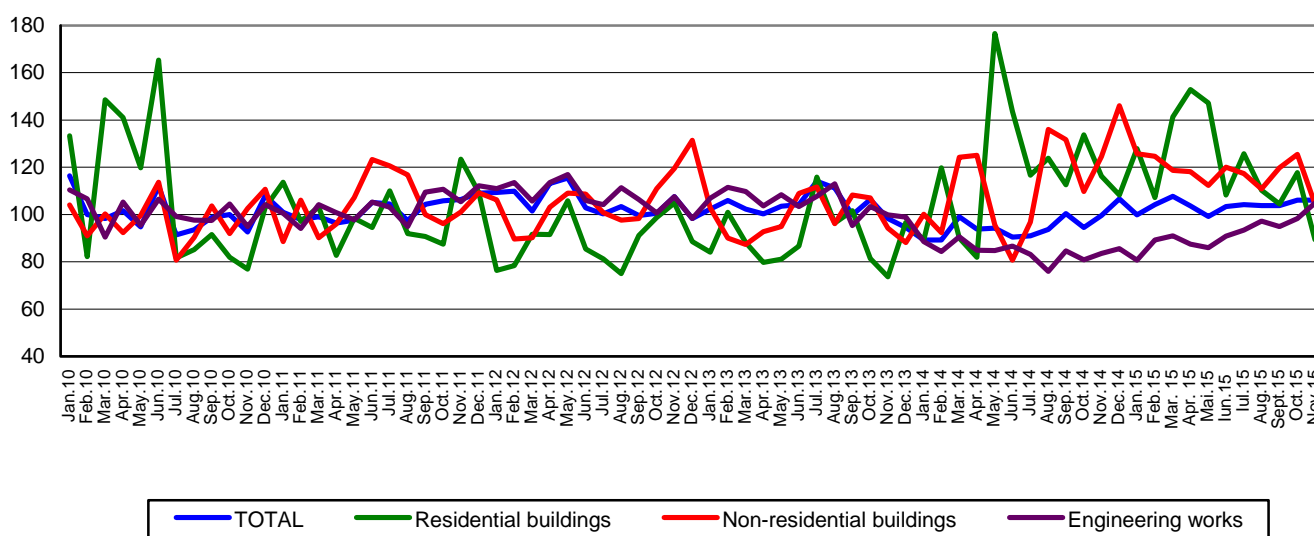
**Monthly evolution of construction works, by structure elements,  
according to CANE Rev. 2  
- January 2010 – November 2015 -  
(adjusted series according to the number of working days and to seasonality)**



[Graph data in xls format](#)

**Monthly evolution of construction works, by construction objects,  
according to CANE Rev. 2  
- January 2010 – November 2015 -  
(adjusted series according to the number of working days and to seasonality)**

- 2010=100 -



[Graph data in xls format](#)

### November 2015 compared to October 2015

The volume of construction works increased, as gross series, by 7.0%, increase highlighted as follows: in maintenance and current repairs works by 9.0%, in new construction works by 7.1% and in capital repairs works by 3.3%.

By construction objects there were rises of 24.6% in engineering works. The volume of construction works in residential buildings and in non-residential buildings decreased by 28.3% and by 14.3%, respectively.

As adjusted series by the number of working days and by seasonality, there was an increase of 2.5% in the new construction works. There were drops in maintenance and current repairs works and in capital repairs works of 3.6% and of 3.0%, respectively.

By construction objects, there were rises in engineering works of 6.7%. Residential buildings and non-residential buildings decreased by 24.1% and by 16.6%, respectively.

### November 2015 compared to November 2014

The volume of construction works increased, as gross series, by 5.9%. By structure elements there were rises in capital repairs works and in maintenance and current repairs works of 26.5% and of 15.0%, respectively. The new construction works decreased by 2.6%.

By construction objects, the volume of the construction works increased in engineering works by 26.4%. There were drops in residential buildings and in non-residential buildings of 30.2% and of 18.7%, respectively.

The volume of construction works increased, as adjusted series by the number of working days and by seasonality, by 6.5%. By structure elements there were rises as follows: in capital repairs works of 28.2% and in maintenance and current repairs works of 6.1%. The new construction works decreased by 2.6%. By construction objects, the volume of construction works increased in engineering works by 25.5%. There were drops in the volume of construction works in residential buildings of 23.1% and in non-residential buildings of 16.1%.

## Period 1.I-30.XI.2015 compared to period 1.I-30.XI.2014

The volume of construction works increased per total, as gross series, by 9.4%. By structure elements there were rises as follows: in capital repairs works of 23.5%, in maintenance and current repairs works of 14.4% and in new construction works of 4.8%.

By construction objects, the volume of construction works increased in engineering works by 16.7% and in non-residential buildings by 3.1%. There were drops in the volume of construction works in residential buildings of 4.5%.

The volume of construction works increased per total, as adjusted series by the number of working days and by seasonality, by 10.2%. By structure elements there were rises as follows: in capital repairs works of 23.4%, in maintenance and current repairs works of 11.0% and in new construction works of 6.8%. By construction objects, the volume of construction works increased as follows: engineering works by 9.3%, non-residential buildings by 6.6% and residential buildings by 2.2%.

### Construction works indices

				- percentage -
		NOVEMBER 2015 compared to:		1-30.XI.2015/ 1-30.XI.2014
		OCTOBER 2015	NOVEMBER 2014	
<b>Constructions - total</b>	<b>B</b>	<b>107.0</b>	<b>105.9</b>	<b>109.4</b>
	<b>S</b>	<b>100.0</b>	<b>106.5</b>	<b>110.2</b>
<b>- by structure elements:</b>				
New constructions	B	107.1	97.4	104.8
	S	102.5	97.4	106.8
Capital repairs	B	103.3	126.5	123.5
	S	97.0	128.2	123.4
Maintenance and current repairs	B	109.0	115.0	114.4
	S	96.4	106.1	111.0
<b>- by construction objects:</b>				
Residential buildings	B	71.7	69.8	95.5
	S	75.9	76.9	102.2
Non-residential buildings	B	85.7	81.3	103.1
	S	83.4	83.9	106.6
Engineering works	B	124.6	126.4	116.7
	S	106.7	125.5	109.3

B= gross series; S= adjusted series according to the number of working days and to seasonality;

[Graphic data in xls format](#)

#### Additional information:

For the correct interpretation of results, kindly see the [Methodological Note attached to the press release on the homepage](#).

For additional information, kindly see the statistical publication Monthly Statistical Bulletin (date of issue January 22, 2016) and the on line data base TEMPO of the NIS (data for November 2015 will be available on January 14, 2016).

For comparable data with the other Member States of the European Union, kindly see the Eurostat press release that will be issued on Tuesday, January 19, 2016 at the address: <http://ec.europa.eu/eurostat/web/main>

The next issue of the press release will be on Friday, February 12, 2016.

The archive of the press releases: <http://www.insse.ro/cms/ro/content/comunicate-de-presa-arhiva>

#### The Department of Communication

e-mail: [birou presa@insse.ro](mailto:birou presa@insse.ro)

Tel: +4021 3181869