

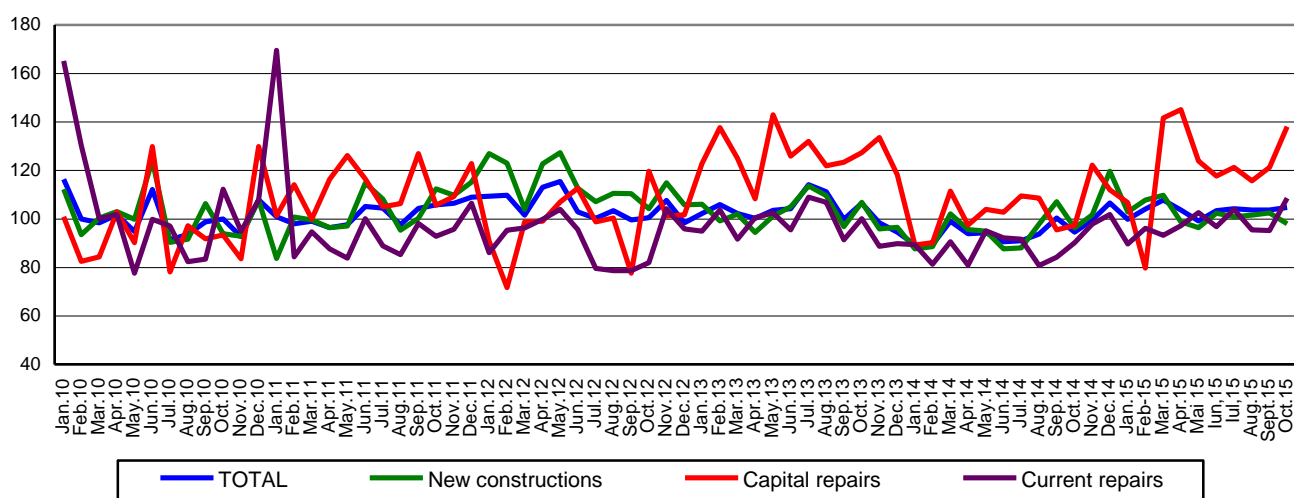
Domain: Construction

THE CONSTRUCTION WORKS INCREASED BY 9.7% IN THE PERIOD 1.I-31.X.2015

- In October 2015, the volume of construction works increased, compared to the previous month, both as gross series and as adjusted series by the number of working days and by seasonality by 4.2% and by 1.0%, respectively.
- Compared to the corresponding month of the previous year, the volume of construction works increased both as gross series and as adjusted series by the number of working days and by seasonality by 9.7% and by 10.8%, respectively.
- In the period 1.I-31.X.2015, the volume of construction works increased compared to the period 1.I-31.X.2014, both as gross series and adjusted series by the number of working days and by seasonality, by 9.7% and by 10.5%, respectively.

**Monthly evolution of construction works, by structure elements,
according to CANE Rev. 2
- January 2010 – October 2015 -
(adjusted series according to the number of working days and to seasonality)**

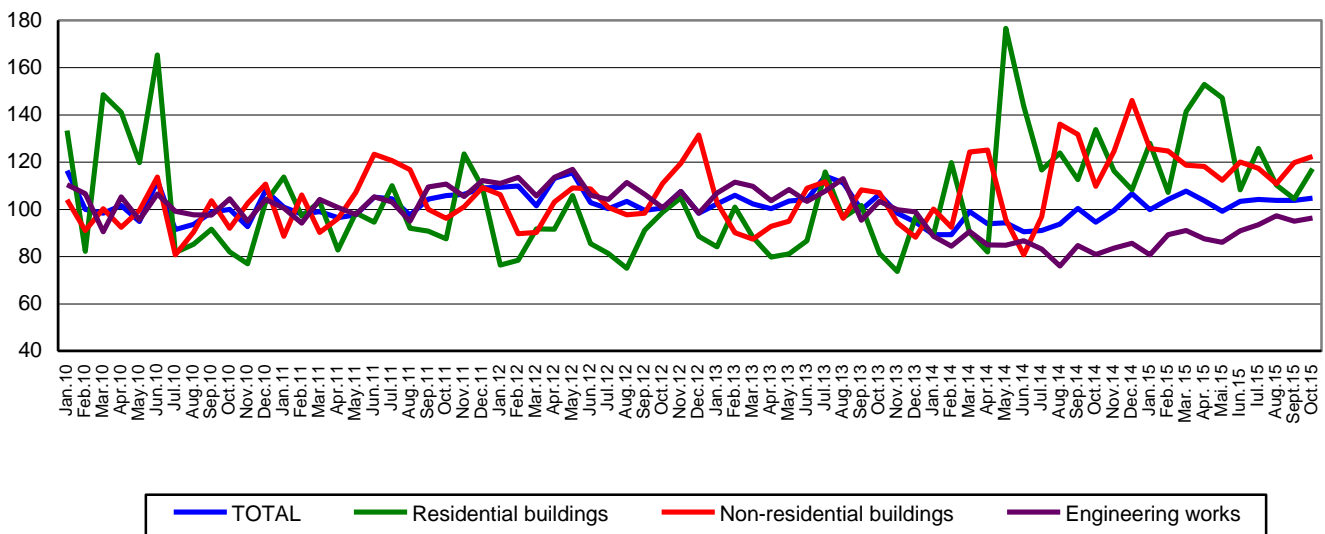
- 2010=100 -



[Graph data in xls format](#)

**Monthly evolution of construction works, by construction objects,
according to CANE Rev. 2
- January 2010 – October 2015 -
(adjusted series according to the number of working days and to seasonality)**

- 2010=100 -



[Graph data in xls format](#)

October 2015 compared to September 2015

The volume of construction works increased, as gross series, by 4.2%, increase highlighted as follows: in capital repairs works and in maintenance and current repairs works by 17.8% and by 16.5%, respectively. There was a decrease of 3.5% in new construction works.

By construction objects there were rises of 10.7% in residential buildings and of 6.2% in engineering works. The volume of construction works in non-residential buildings decreased by 2.3%.

As adjusted series by the number of working days and by seasonality, there was a total increase of 1.0%, highlighted as follows: in capital repairs works and in maintenance and current repairs works of 13.9%, each. There was a decrease of 4.4% in the new construction works.

By construction objects, there were rises as follows: in residential buildings of 12.1%, in non-residential buildings of 2.2% and in engineering works of 1.4%.

October 2015 compared to October 2014

The volume of construction works increased, as gross series, by 9.7%. By structure elements there were rises as follows: in capital repairs works and in maintenance and current repairs works of 38.2% and of 21.0%, respectively.

By construction objects, the volume of the construction works increased in engineering works by 14.0% and in non-residential buildings by 10.9%. There were drops of 9.0% in residential buildings.

The volume of construction works increased, as adjusted series by the number of working days and by seasonality, by 10.8%. By structure elements there were rises as follows: in capital repairs works of 42.0%, in maintenance and current repairs works of 20.3% and in new construction works of 1.8%.

By construction objects, the volume of construction works increased in engineering works by 19.2% and in non-residential buildings by 11.5%. There were drops in the volume of construction works in residential buildings of 12.3%.

Period 1.I-31.X.2015 compared to period 1.I-31.X.2014

The volume of construction works increased per total, as gross series, by 9.7%. By structure elements there were rises as follows: in capital repairs works of 19.6%, in maintenance and current repairs works of 14.4% and in new construction works of 6.1%.

By construction objects, the volume of construction works increased in engineering works by 15.0% and in non-residential buildings by 6.0%. There were drops in the volume of construction works in residential buildings of 1.3%.

The volume of construction works increased per total, as adjusted series by the number of working days and by seasonality, by 10.5%. By structure elements there were rises as follows: in capital repairs works of 20.4%, in maintenance and current repairs works of 11.7% and in new construction works of 7.9%. By construction objects, the volume of construction works increased as follows: non-residential buildings by 8.9%, engineering works by 7.5% and in residential buildings by 4.6%.

Construction works indices

				- percentage-
		OCTOBER 2015 compared to:		1-31.X.2015/ 1-31.X.2014
		SEPTEMBER 2015	OCTOBER 2014	
Constructions - total	B	104.2	109.7	109.7
	S	101.0	110.8	110.5
- by structure elements:				
New constructions	B	96.5	100.0	106.1
	S	95.6	101.8	107.9
Capital repairs	B	117.8	138.2	119.6
	S	113.9	142.0	120.4
Maintenance and current repairs	B	116.5	121.0	114.4
	S	113.9	120.3	111.7
- by construction objects:				
Residential buildings	B	110.7	91.0	98.7
	S	112.1	87.7	104.6
Non-residential buildings	B	97.7	110.9	106.0
	S	102.2	111.5	108.9
Engineering works	B	106.2	114.0	115.0
	S	101.4	119.2	107.5

B= gross series; S= adjusted series according to the number of working days and to seasonality;

[Graphic data in xls format](#)

Additional information:

For the correct interpretation of results, kindly see the [Methodological Note attached to the press release on the homepage](#).

For additional information, kindly see the statistical publication Monthly Statistical Bulletin (date of issue December 22, 2015) and the on line data base TEMPO of the NIS (data for October 2015 will be available on December 14th).

For comparable data with the other Member States of the European Union, kindly see the Eurostat press release that will be issued on Thursday, December 17, 2015 at the address: <http://ec.europa.eu/eurostat/web/main>

The next issue of the press release will be on Thursday, January 14, 2016.

The archive of the press releases: <http://www.insse.ro/cms/en/content/press-releases>

The Department of Communication

e-mail: biroupres@insse.ro

Tel: +4021 3181869