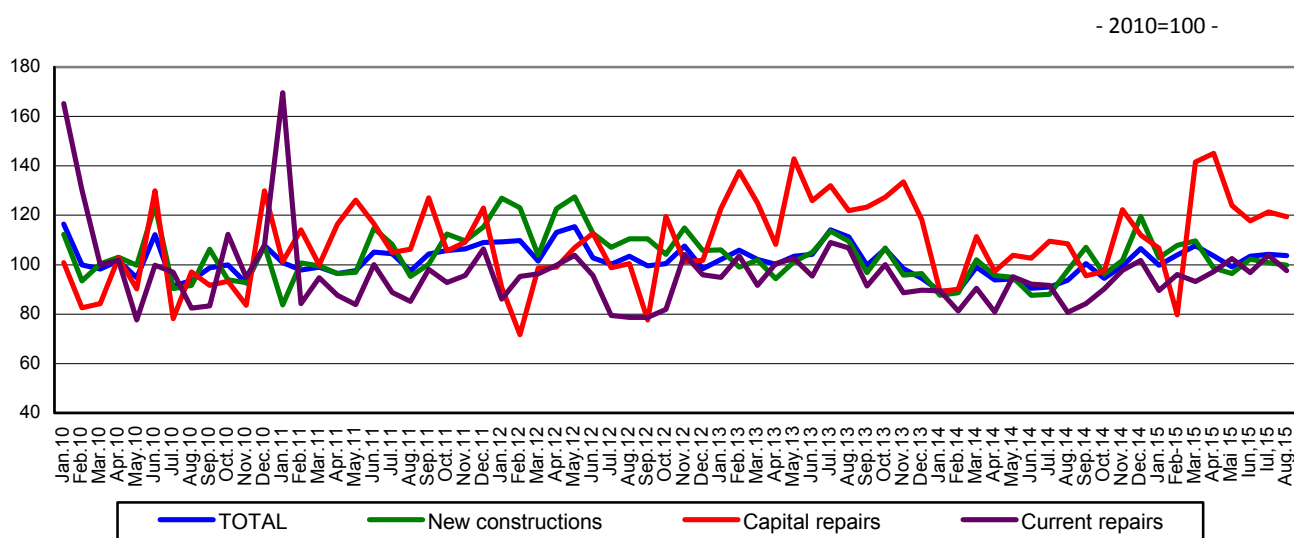


Domain: Construction

THE CONSTRUCTION WORKS INCREASED BY 10.8%

- In August 2015, the volume of construction works increased, compared to the previous month, as gross series by 5.2% and decreased as adjusted series by the number of working days and by seasonality by 0.4%.
- Compared to the corresponding month of the previous year, the volume of construction works increased both as gross series and as adjusted series by the number of working days and by seasonality by 10.8% and by 10.6%, respectively.
- In the period 1.I-31.VIII.2015, the volume of construction works increased compared to the period 1.I-31.VIII.2014, both as gross series and adjusted series by the number of working days and by seasonality, by 11.1% and by 11.4%, respectively.

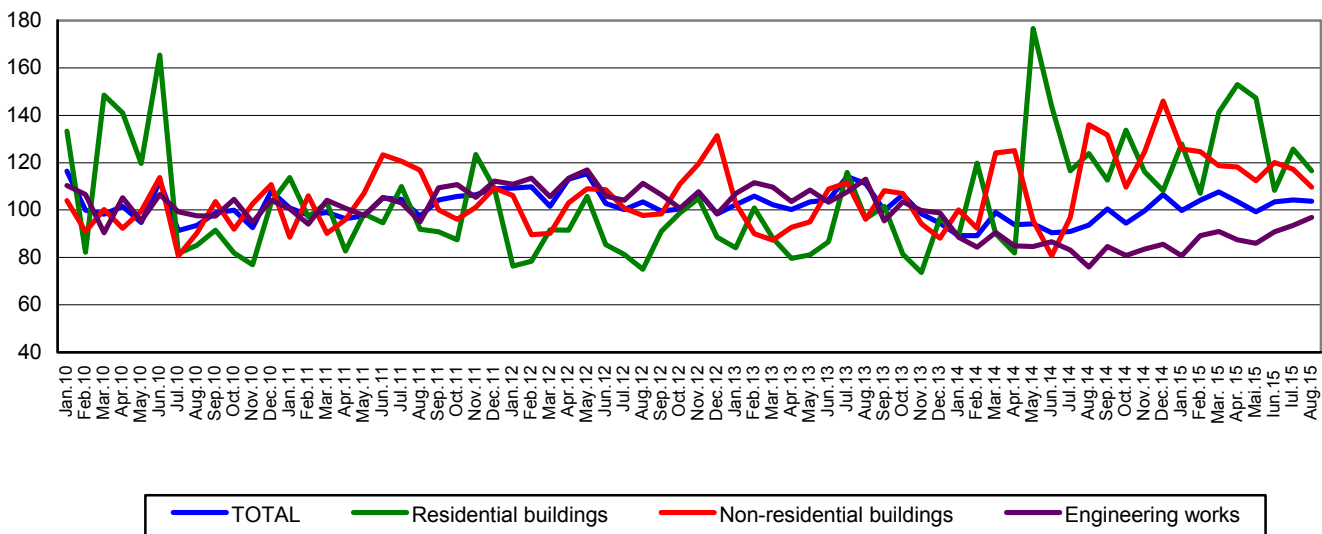
**Monthly evolution of construction works, by structure elements,
according to CANE Rev. 2
- January 2010 – August 2015 -
(adjusted series according to the number of working days and to seasonality)**



[Graph data in xls format](#)

**Monthly evolution of construction works, by construction objects,
according to CANE Rev. 2
- January 2010 – August 2015 -
(adjusted series according to the number of working days and to seasonality)**

- 2010=100 -



[Graph data in xls format](#)

August 2015 compared to July 2015

The volume of construction works increased, as gross series, by 5.2%, increase highlighted as follows: in capital repairs works by 13.7%, in new construction works by 4.5% and in maintenance and current repairs works by 2.3%.

By construction objects there were rises of 11.9% in engineering works. There were drops in residential buildings and in non-residential buildings of 8.4% and of 1.6%, respectively.

As adjusted series by the number of working days and by seasonality, there was a total decrease of 0.4% highlighted as follows: in maintenance and current repairs works of 5.9%, in capital repairs works of 1.5% and in new construction works of 1.0%.

By construction objects, there were drops in residential buildings and in non-residential buildings of 7.3% and of 6.5%, respectively. There were rises of 3.6% in engineering works.

August 2015 compared to August 2014

The volume of construction works increased, as gross series, by 10.8%. By structure elements there were rises as follows: in maintenance and current repairs works of 27.2%, in capital repairs works of 22.8% and in new construction works of 3.0%.

By construction objects, the volume of the construction works increased in engineering works by 37.6%. There were drops in non-residential buildings and in residential buildings of 16.9% and of 9.9%, respectively.

The volume of construction works increased, as adjusted series by the number of working days and by seasonality, by 10.6%. By structure elements there were rises as follows: in maintenance and current repairs works of 20.8%, in capital repairs works of 10.0% and in new construction works of 2.1%.

By construction objects, the volume of construction works increased in engineering works by 27.6%. There were drops in non-residential buildings and in residential buildings of 19.4% and of 5.8%, respectively.

Period 1.I-31.VIII.2015 compared to period 1.I-31.VIII.2014

The volume of construction works increased per total, as gross series, by 11.1%. By structure elements there were rises in capital repairs works of 16.3%, in maintenance and current repairs works of 13.8% and in new construction works of 9.0%.

By construction objects, the volume of construction works increased as follows: engineering works by 14.9%, non-residential buildings by 8.7% and residential buildings by 2.6%.

The volume of construction works increased per total, as adjusted series by the number of working days and by seasonality, by 11.4%. By structure elements there were rises as follows: in capital repairs works of 17.6%, in maintenance and current repairs works of 10.7% and in new construction works of 10.3%.

By construction objects, the volume of construction works increased as follows: non-residential buildings by 11.3%, residential buildings by 9.1% and engineering works by 5.5%.

Construction works indices

- percentage -

		AUGUST 2015 compared to:		1-31.VIII.2015/ 1-31.VIII.2014
		JULY 2015	AUGUST 2014	
Constructions - total	B	105.2	110.8	111.1
	S	99.6	110.6	111.4
- by structure elements:				
New constructions	B	104.5	103.0	109.0
	S	99.0	102.1	110.3
Capital repairs	B	113.7	122.8	116.3
	S	98.5	110.0	117.6
Maintenance and current repairs	B	102.3	127.2	113.8
	S	94.1	120.8	110.7
- by construction objects:				
Residential buildings	B	91.6	90.1	102.6
	S	92.7	94.2	109.1
Non-residential buildings	B	98.4	83.1	108.7
	S	93.5	80.6	111.3
Engineering works	B	111.9	137.6	114.9
	S	103.6	127.6	105.5

B= gross series; S= adjusted series according to the number of working days and to seasonality;

[Graphic data in xls format](#)

Additional information:

For the correct interpretation of results, kindly see the [Methodological Note attached to the press release on the homepage](#).

For additional information, kindly see the statistical publication Monthly Statistical Bulletin (date of issue October 19, 2015) and the on line data base TEMPO of the NIS (data for August 2015 will be available on October 13th).

For comparable data with the other Member States of the European Union, kindly see the Eurostat press release that will be issued on Monday, October 19, 2015 at the address: <http://ec.europa.eu/eurostat/web/main>

The next issue of the press release will be on Wednesday, November 11, 2015.

The archive of the press releases: <http://www.insse.ro/cms/en/content/press-releases>

The Department of Communication

e-mail: biroupresa@insse.ro

Tel: +4021 3181869