

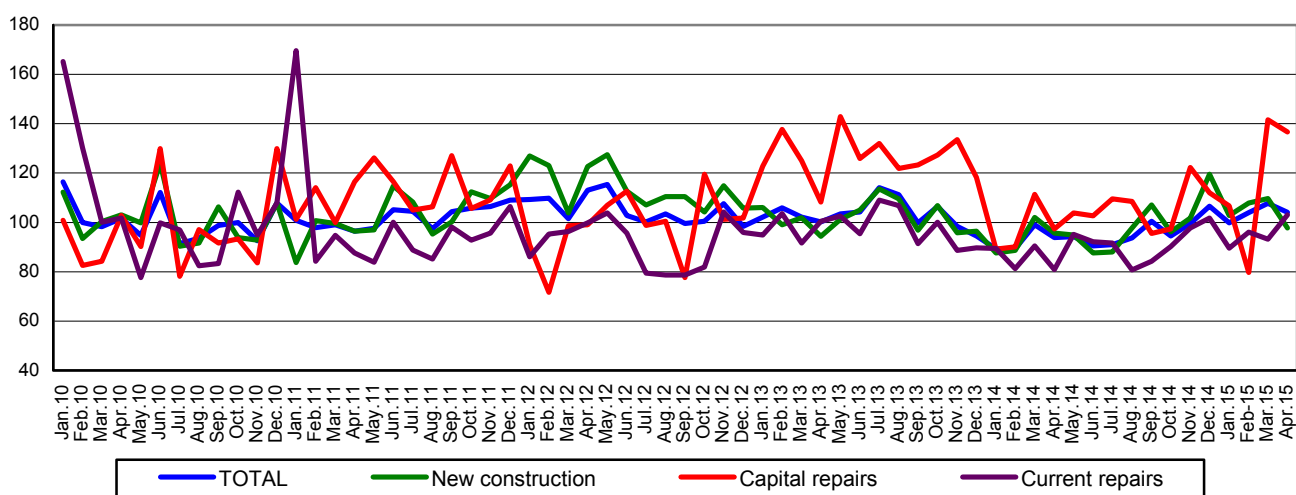
Domain: Construction

THE CONSTRUCTION WORKS INCREASED BY 10.3%

- In April 2015, the volume of construction works decreased, compared to the previous month, both as gross series and adjusted series by the number of working days and by seasonality by 0.8% and by 3.3%, respectively.
- Compared to the corresponding month of the previous year, the volume of construction works increased as gross series by 10.3%, while as adjusted series by the number of working days and by seasonality increased by 10.8%.
- During the period 1.01 – 30.04.2015, the volume of construction works increased, compared to the period 1.01 – 30.04.2014, both as gross series and adjusted series by the number of working days and by seasonality by 12.2% and by 11.9%, respectively.

**Monthly evolution of construction works, by structure elements,
according to CANE Rev. 2
- January 2010 – April 2015-**
(adjusted series according to the number of working days and to seasonality)

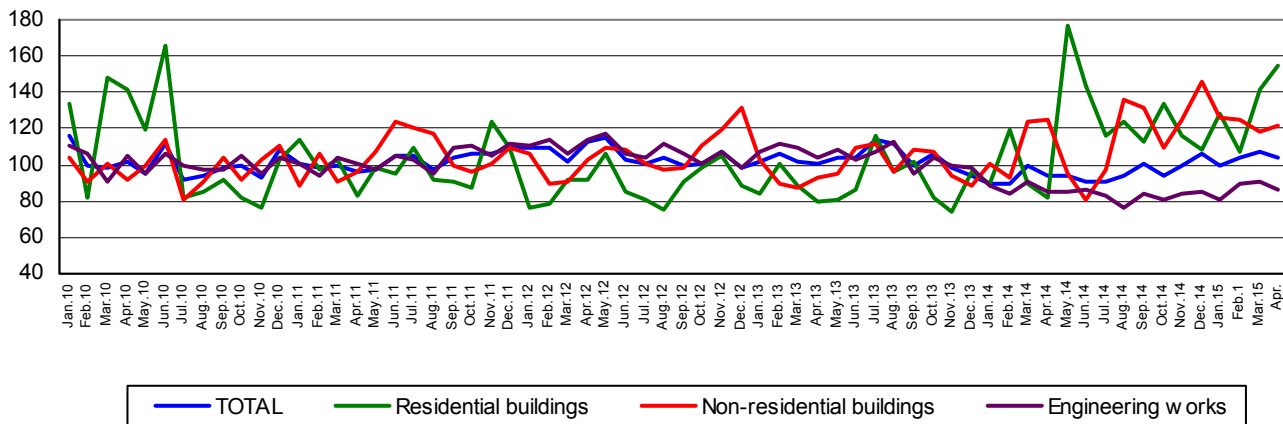
- 2010=100 -



[Graphic data in xls format](#)

**Monthly evolution of construction works, by construction objects,
according to CANE Rev. 2
- January 2010 – April 2015 -
(adjusted series according to the number of working days and to seasonality)**

- 2010=100 -



[Graphic data in xls format](#)

April 2015 compared to March 2015

The volume of construction works decreased, as gross series, by 0.8%, decrease highlighted in new construction works by 8.4% and in capital repair works by 2.2%. Maintenance and current repairs works increased by 25.5%.

By construction objects there were rises for residential buildings and non-residential buildings by 10.8%, respectively by 0.8%. Engineering works decreased by 5.2%.

The volume of construction works increased per total, as adjusted series by the number of working days and by seasonality, by 3.3%, increase highlighted in new construction works by 10.9% and in capital repair works by 3.5%. Maintenance and current repairs works increased by 10.7%.

By construction objects, engineering works decreased by 5.8%. Rises were registered for residential buildings and non-residential buildings by 9.6%, respectively by 2.1%.

April 2015 compared to April 2014

The volume of construction works increased, as gross series, by 10.3%. By structure elements there were rises in maintenance and current repairs works and in capital repairs works by 33.8%, respectively by 29.7%. The new construction works decreased by 0.6%.

By construction objects, the volume of construction works increased for residential buildings by 69.5% and for engineering works by 10.1%. Non-residential buildings fell by 6.6%.

The volume of construction works increased, as adjusted series by the number of working days and by seasonality, by 10.8%. By structure elements there were rises in the capital repairs works by 40.3%, in maintenance and current repairs works by 27.5% and in new construction works by 2.2%.

By construction objects, the volume of construction works increased by 89.1% in residential buildings and by 1.0% in engineering works. Non-residential buildings decreased by 3.1%.

The period 1.01 – 30.04.2015 compared to the period 1.01 – 30.04.2014

The volume of construction works increased per total, as gross series, by 12.2%. By structure elements there were rises in capital repairs works by 19.3%, in maintenance and current repairs works by 14.8% and in new construction works by 10.0%.

By construction objects there were rises as follows: in residential buildings by 38.4%, in engineering works by 9.7% and in non-residential buildings by 6.0%.

The volume of construction works increased per total, as adjusted series by the number of working days and by seasonality, by 11.9%. By structure elements there were rises as follows: in capital repairs works by 19.7%, in new construction works by 11.8% and in the maintenance and current repairs works by 11.7%.

By construction objects, the volume of construction works increased by 39.5% in residential buildings and by 11.0% in non-residential buildings. There was a decrease of 0.5% in the engineering works.

Construction works indices

		APRIL 2015 compared to:		- percentage -
		MARCH 2015	APRIL 2014	1.01 – 30.04.2015/ 1.01 – 30.04.2014
Construction - total	B	99.2	110.3	112.2
	S	96.7	110.8	111.9
- by structure elements:				
New construction	B	91.6	99.4	110.0
	S	89.1	102.2	111.8
Capital repairs	B	97.8	129.7	119.3
	S	96.5	140.3	119.7
Maintenance and current repairs	B	125.5	133.8	114.8
	S	110.7	127.5	111.7
- by construction objects:				
Residential buildings	B	110.8	169.5	138.4
	S	109.6	189.1	139.5
Non-residential buildings	B	100.8	93.4	106.0
	S	102.1	96.9	111.0
Engineering works	B	94.8	110.1	109.7
	S	94.2	101.0	99.5

B= gross series; S= adjusted series according to the number of working days and to seasonality;

[Graphic data in xls format](#)

Informații suplimentare:

Additional information:

For the correct interpretation of results, kindly see the [Methodological Note](#).

For additional information, kindly see the statistical publication Monthly Statistical Bulletin (date of issue June 18, 2015) and the on line data base TEMPO of the NIS.

For comparable data with the other Member States of the European Union, kindly see the Eurostat press release, issued on Wednesday, June 17, 2015 at the address: <http://ec.europa.eu/eurostat/web/main>

The next issue of the press release will be on Monday, July 13, 2015.

The archive of the press releases: <http://www.insse.ro/cms/en/content/press-releases>

The Communication Department

e-mail: birou presa@insse.ro

Tel: +4021 3181869