

PRESS RELEASE

No. 231 of September 26, 2014

Volume of exploited wood in 2013

For correct interpretation of the results, please read the methodological notes on page 2 of this press release

In 2013, the volume of exploited wood by economic operators with logging activity was by 1.2% lower than in 2012.

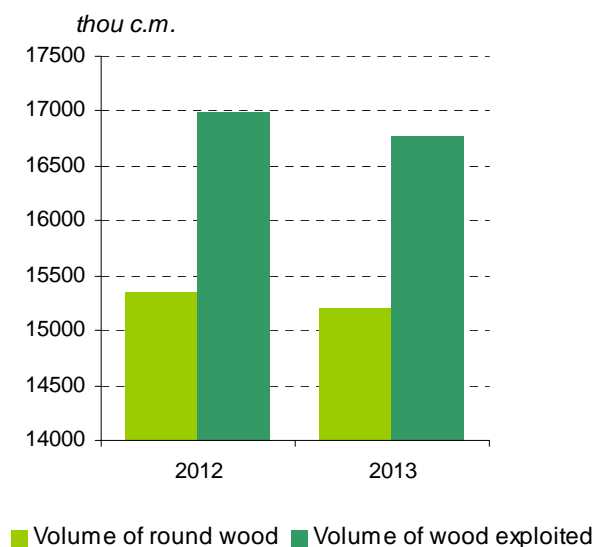
The volume of exploited wood in 2013 compared to 2012, by wood species

thou c.m.

	2012	2013	Differences (±) 2013 compared to 2012
Total	16981	16778	-203
Round wood - total	15345	15195	-150
- Coniferous	5846	5902	+56
- Beech	5243	5178	-65
- Oak	1308	1437	+129
- Various strong wood	1526	1507	-19
- Various soft wood	1422	1171	-251
Bark	809	848	+39
Other types	827	735	-92

Out of round wood volume, 38.8% represents coniferous and 61.2% hardwood.

Volume of round timber in 2013 compared with 2012



In 2013 compared to 2012, a fall by 1.0% was registered in the volume of round wood because of the decrease in the volume of exploited wood.

The manufacturing of logs into sawn timber represented the main destination of exploited round wood, 54.7 %, by 2.8 percentage points less than in 2012.

Destination of round wood in 2013 compared to 2012

thou c.m.

	2012	2013	Differences (±) 2013 compared to 2012
Total	15345	15195	-150
Logs for sawn timber	8817	8309	-508
Logs for veneer	276	299	+23
Logs for resonance	*)	*)	*)
Pulpwood	334	305	-29
Wood for boards	247	275	+28
Fender	17	15	-2
Wood for buildings	810	830	+20
Tanning wood	-	1	+1
Charcoal wood	45	42	-3
Wood for other uses	44	57	+13
Fuelwood	4755	5062	+307

*) data lower than 0.5

Methodological notes

1. Data source is the statistical survey on „*Volume of exploited wood*“.
2. Statistical survey is exhaustive and addresses economic operators with forestry activity, harvesting wood in 2013. Data were collected from 3366 economic operators through a statistical questionnaire.
3. Data are provisional and can be revised based on the corrections retroactively done by economic operators.
4. Definitions:

Volume of exploited wood – volume of harvested wood mass, removed from the forest, pointed out in the documents of forestry unit. It is excluded: standing wood mass as well as that fell down and not harvested from parcels at end of production year. Volume of exploited wood includes: roundwood, industrial wood bark and other secondary items.

Volume of round wood – volume of industrial wood (without bark) and fuel wood.

Other types – volume of branches, remains and technological consumption.

For details, read the statistical metadata base, accessing:

<http://colectaredate.insse.ro/metadata/public.htm?locale=ro>

Additional information can be obtained from the publication „Volume of exploited wood in 2013” which is to be issued on 24.10.2014.